

535035

Product Sheet

ares

THE OUTDOOR BY FLOS

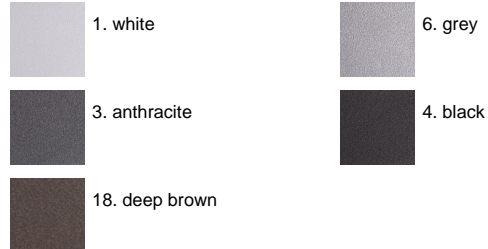
ARES s.r.l - Socio Unico
v.le dell'Artigianato n.24 - 20881 Bernareggio - MB (Italy)
www.aresill.net - flos.outdoor@flos.com

Kamino

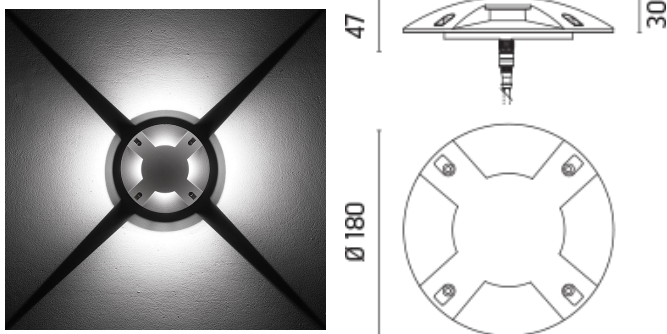
Round luminaire with radial emission for installation inground -recessed. Configuration: two sizes available. Die-cast aluminium structure, EN AB-47100 alloy (low copper content). Transparent borosilicate glass. Double layer coating for high resistance to corrosion: the aluminium components are painted with a double coat using powders which are compliant with QUALICOAT standards: a first layer of epoxy powder (with excellent chemical and mechanical resistance) and a second finishing layer of polyester powder (resistant to UV rays and atmospheric agents). The entire painting process of the aluminium fitting starts from components which have been sandblasted in advance to make the surface more porous and increase the adherence of the paint. Ares effects alkaline and acid washing to clean the surfaces completely, then rinses with demineralised water to remove any residue particles, subsequently a chemical conversion treatment is done to protect against rusting. Light emission: one emission, two opposite emissions, four emissions. Protection rating: IP67 In compliance with EN60598-1 standards Class of insulation: II; version 24V: III Installation: the luminaire is equipped with a watertight M12 screw-connector providing optimal insulation against water ingress. 220-240V: the power supply unit is equipped with a piece of cable of 400mm with screw connector towards the luminaire and a piece of cable of 300mm to be used for wiring. 24V: the luminaire is supplied with a piece of cable with screw-connector to be used for wiring. Outdoor use requires suitable flexible cables. Installation requires a dedicated box to be ordered separately. It is important to provide a >300mm gravel layer or a drain system (for concrete surface) to ensure good drainage and to avoid water stagnation. Kamino 24V is equipped with a dc/dc highly efficient resin-coated converter that removes electromagnetic interference and allows parallel wiring and is protected against polarity reversal and sudden voltage peak. We recommend the use of a connection system with a protection degree greater than or equal to the protection degree of the luminaire.

IP67

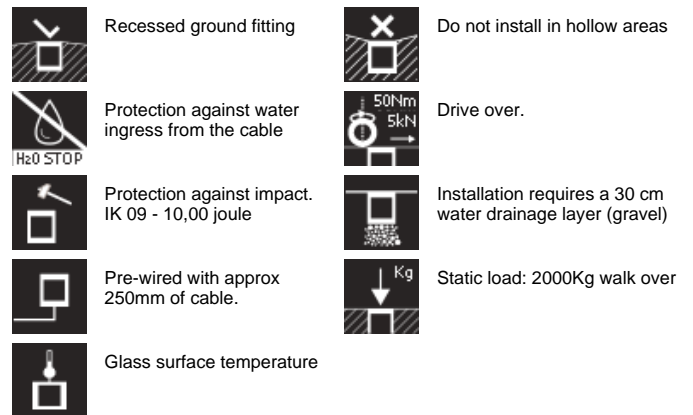
Available Colors for this Version



Kamino180 Power LED / Omnidirectional



Ground Recessed



Product Code Details

535035

Light Source



NATURAL WHITE 4000K POWER LEDs 8,8W/24Vdc
Total power 11,2W
LED lm 4x266 ÷ OUTPUT lm 4x74
CRI >80

Remote electronic power supply to be ordered



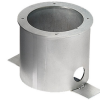
Light Flux, Placement



Accessories



Code: 194
Box for installation
263 X 173 H 85 mm



Code: 195
High resistance in-ground fixing base
250 H 150 mm



Code: 219
Splitter M12 connector



Code: 220
M12 connector L.5000 mm



Code: 147
Supported n. of lamps: 1
Power supply
20W/220÷240V - 24Vdc
IP67 CLASS II SELV.



Code: 155
Supported n. of lamps: 3
Power supply
50W/120÷240V - 24Vdc
IP67 CLASS II SELV.



Code: 110
Supported n. of lamps: 6
Power supply
70W/220÷240V - 24Vdc
IP67 CLASS II SELV EQ.