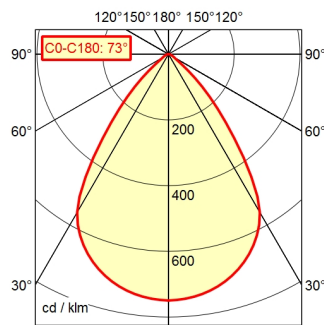


CEE 7/XVI

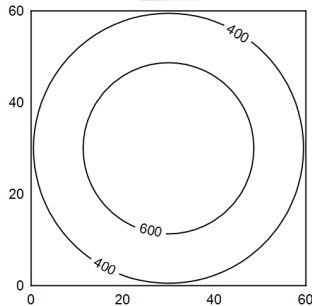
A60 ↓ 100.0% Φ: 295 lm



60 x 60 cm 0° Φ: 295 lm

Em: 513 lx
Emax: 792 lx
Emin: 196 lx

= 50 cm



light source
work equipment
connected load
power consumption
standby
power factor
luminous flux
luminous efficiency
light type/-color
colour temperatur
color rendering index
light distribution
direct ratio
beam angle
chromaticity tolerance LED
glare control
system of protection
class of protection
technology
operation
housing
cover
arm
balance of articulation joints
weight (net)
mains lead
fastening
maximum ambient temperature
special features

LED module
electronic plug-in transformer
100-240 V, 50/60 Hz; secondary 5 V, DC
env. 4 W
env. 0,3 W
env. 0,97
approx. 295 lm
approx. 95 lm/W
cold white
approx. 4.000 K
CRI > 80
direct
approx. 100 %
73°
< 3 SDCM
screen
IP 20
II with plug-in power supply, III without plug-in power supply
continuously dimmable;
Gleichspannungssteuerungssigna
push button
plastic; untreated; umbra grey
Polycarbonate (PC); satine
tubular aluminium section; anodized; tubular section upright; titanium
none
ca. 1,0 kg
ca. 1,85 m; mains plug: CEE 7/XVI
adaptor (accessory); table clamp (accessory); table base
30 °C
push button in luminaire head