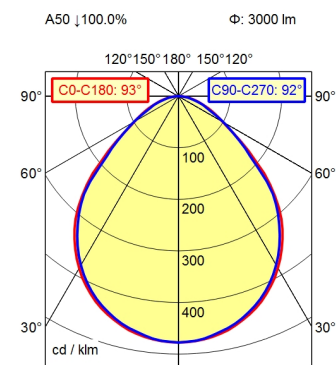


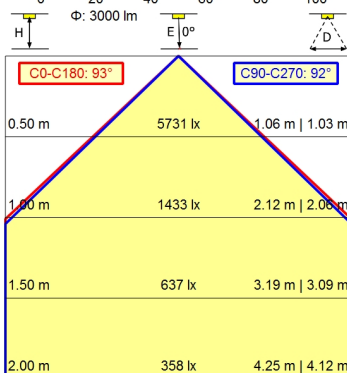
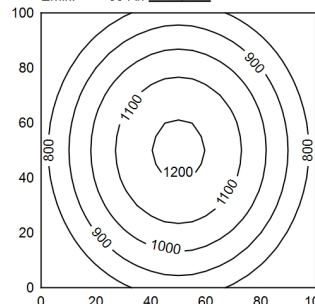
CE



GST 18i3F REV



100 x 100 cm Φ: 3000 lm
Em: 939 lx
Emax: 1213 lx
Emin: 634 lx



Light source
Work equipment
Connected load
Power consumption
Luminous flux
Light type/-color
Colour temperatur
Color rendering index
Light distribution
Direct ratio
Beam angle
Glare control
Luminance (L65)
Unified glare rating (4H 8H)
System of protection
Class of protection
Technology
Operation
Housing
Light source cover
Weight (net)
Mains lead
Design
Fastening
Dimension
Decorative contrast side parts
Special features

LED
Power supply unit
220 - 240 V; AC; 50 Hz; 60 Hz
ca. 35 W
approx. 3.000 lm
Cold white
approx. 5.000 K
CRI ≥ 80
Direct
approx. 100 %
92°
Structured screen
≤ 13.000 cd/m²
≤ 25
IP 20
I
Switchable; -
Rocker switch
Aluminium/plastic; Anodised; Aluminium coloured
anodised
Structured
ca. 3,2 kg
Built-in plug; GST 18i3F REV
mounted version
Screw down lash
A=899 mm
Dusty grey
Through-wired