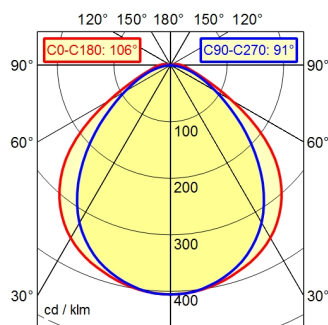


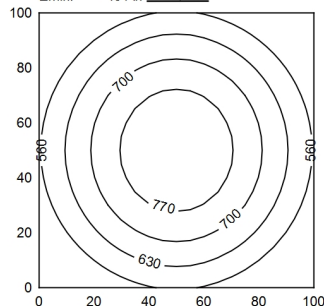
ST16/2 BS

A40 ↓98.8% ↑1.2% Φ: 2400 lm



100 x 100 cm Φ: 2400 lm

Em: 647 lx
Emax: 827 lx
Emin: 451 lx



Light source
Work equipment
Connected load
Power consumption
Luminous flux
Luminous efficiency
Light type/color
Colour temperatur
Color rendering index
Light distribution
Direct ratio
Beam angle
Chromaticity tolerance LED
Glare control
Luminance (L65)
Unified glare rating (4H 8H)
System of protection
Class of protection
Technology
Operation
Housing
Light source cover
Weight (net)
Mains lead
Fastening
Dimension
Side part
Light output
Maximum ambient temperature
Special features

LED
Without
22 - 26 V; DC
ca. 31,5 W
approx. 2.400 lm
approx. 75 lm/W
Cold white
approx. 5.000 K
CRI ≥ 80
Direct
approx. 99 %
100°
< 4 SDCM
Diffuser foil
≤ 14.000 cd/m²
≤ 25
IP 67
III
Switchable; -
External
Polycarbonate (PC), clear
Polycarbonate (PC)
ca. 2,2 kg
Built-in plug; Connector; ST16/2 BS
Pipe clamp (accessory)
A=790 mm
A with screwed cable gland
D=736 mm
40 °C
Light forming