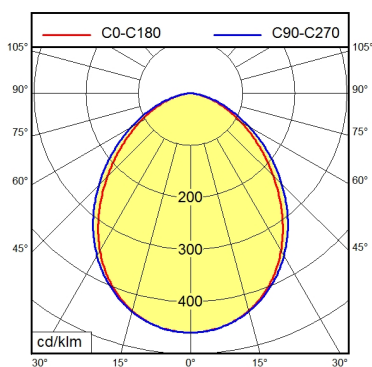


Surface-mounted luminaire LUMATRIS MSAL 48 S

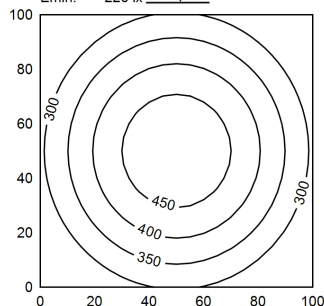
113095000-00596803



RSFPM 5/0.5 M



100 x 100 cm
Em: 359 lx
Emax: 487 lx
Emin: 226 lx
= 100 cm



Light source
Work equipment
Connected load
Power consumption
Luminous flux
Luminous efficiency
Light type/color
Colour temperatur
Color rendering index
Light distribution
Beam angle
Chromaticity tolerance LED
Luminance (L65)
Unified glare rating (4H 8H)
System of protection
Class of protection
Technology
Operation
Housing
Light source cover
Weight (net)
Mains lead
Design
Fastening
Dimension
Maximum ambient temperature
Decorative contrast side parts
Special features

LED
Without
22 - 26 V; DC
ca. 16 W
approx. 1.140 lm
approx. 71 lm/W
Daylight
approx. 5.600 K
CRI ≥ 80
Direct; Symmetric
90°
< 5 SDCM
≤ 13.000 cd/m²
≤ 25
IP 68 - 1 m / IPX9
III
Switchable; -
External
Aluminium; Anodised; Aluminium coloured
anodised
Borosilicate
ca. 2,5 kg
Built-in plug; RSFPM 5/0.5 M
mounted version
Mounting rail; Tap hole 2xM6
A=420mm
55 °C
Metallic silver
Light forming; Connection on the rear side