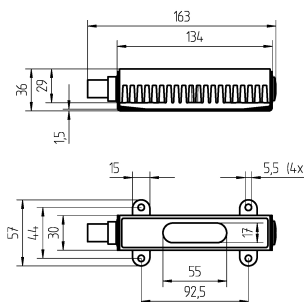
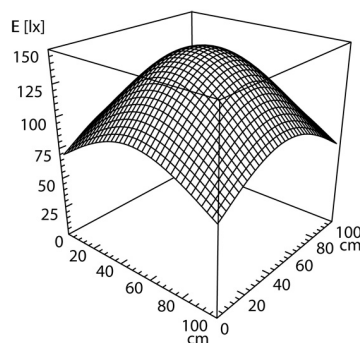
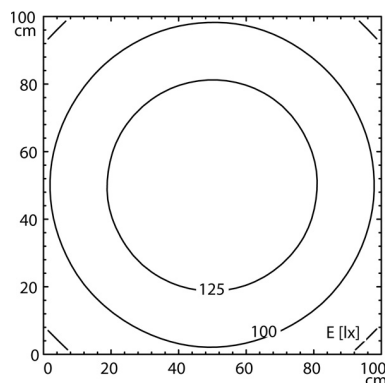
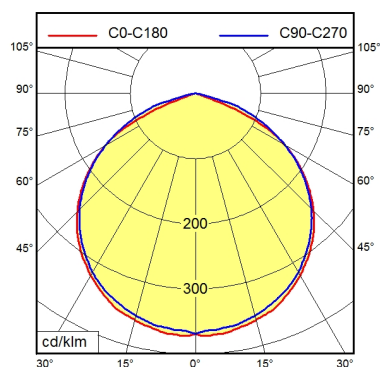


Surface-mounted luminaire ONE LED MVAL 1 S

112887027-00076050



QUICKON 3



Light source
Work equipment
Connected load
Power consumption
Luminous flux
Luminous efficiency
Light type/color
Colour temperatur
Color rendering index
Light distribution
Glare control
System of protection
Class of protection
Technology
Operation
Housing
Light source cover
Weight (net)
Mains lead
Design
Fastening
Maximum ambient temperature
Special features

LED
Without
20 - 28 V; DC
ca. 6 W
approx. 400 lm
approx. 66 lm/W
Cold white
approx. 5.000 K
CRI ≥ 80
Direct; Symmetric
See luminaire type
IP 54
III
-
External
Aluminium; Untreated; Aluminium coloured
anodised
Acrylic (PMMA); Clear
ca. 0,4 kg
Built-in plug; QUICKON 3
mounted version
Screws
50 °C
Luminaire body rotatable ±90°