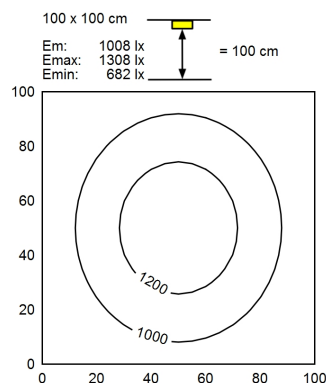
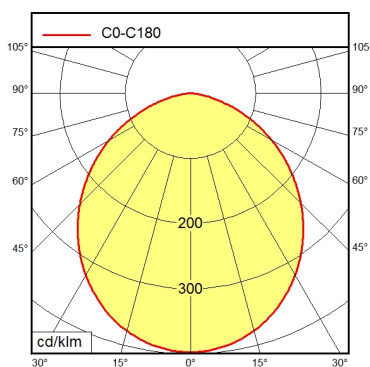
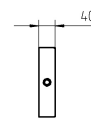
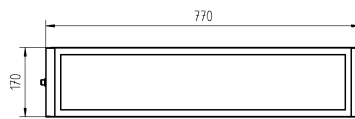


Surface-mounted luminaire LUMATRIS MSAL 180 S

112574000-00608680



Light source
Work equipment
Connected load
Power consumption
Luminous flux
Luminous efficiency
Light type/color
Colour temperatur
Color rendering index
Light distribution
Beam angle
Chromaticity tolerance LED
Luminance (L65)
Unified glare rating (4H 8H)
System of protection
Class of protection
Technology
Operation
Housing
Light source cover
Weight (net)
Mains lead
Design
Fastening
Maximum ambient temperature
Decorative contrast side parts
Special features

LED
Without
22 - 26 V; DC
ca. 50 W
approx. 3.760 lm
approx. 75 lm/W
Daylight
approx. 5.600 K
CRI ≥ 80
Direct; Symmetric
90°
< 5 SDCM
≤ 11.000 cd/m²
≤ 25
IP 68 - 1 m / IPX9
III
Two-stage switchable; -
External
Aluminium; Anodised; Aluminium coloured
anodised
Borosilicate
ca. 7,5 kg
Built-in plug; RSFPM 5/0.5 M
mounted version
Mounting rail; Tap hole 2xM6
60 °C
Metallic silver
Eco mode; Connection on the side; Diffuser