

STAR

12-06-2015

1.0

QT14 max. 40W | G9 | 220-240VAC | 50-60Hz

CE IP54 960°C 0,9m TB

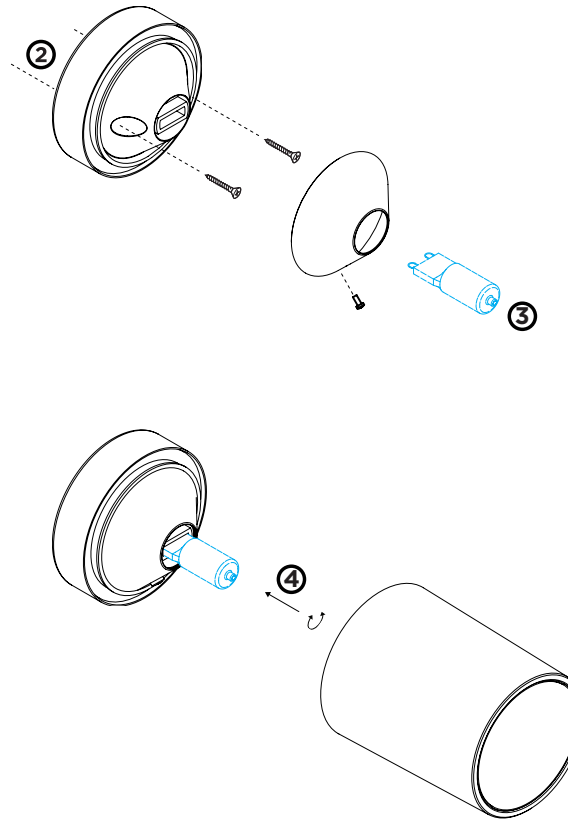
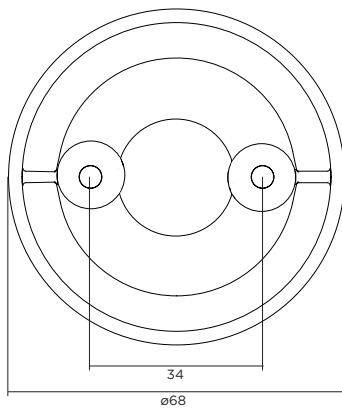
inox

7131V010

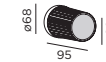
OPTIONAL

for QT14 lamps see our catalogue

wall base dimensions

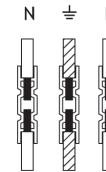


DIMENSIONS



POWER CONNECTION

① Exterior: WATERPROOF Connection



MOUNTING INSTRUCTION

- ② Attach the wall base to the ceiling with screws
- ③ Mount the lamp and reflector on the wall base. Use the screw to fix the reflector
- ④ Turn the STAR cover on the wall base



WEVER & DUCRÉ
LIGHTING

www.weverducre.com

**INSTALLATION
INSTRUCTIONS**