

TRAIN

28-JUN.-2017

1.0

LED 6W | 220-240VAC | 50-60Hz | COB 3-step | incl. power supply

CE IP65 960°C 0,3m

3000K | >80CRI | 420lm

white texture	<i>(This surface finish is not recommended for outdoor use.)</i>	719463W4
aluminium brushed	<i>(This surface finish is not recommended for outdoor use.)</i>	719163L4
white texture		719163W4
dark grey texture		719163D4
black texture		719163B4

2.0

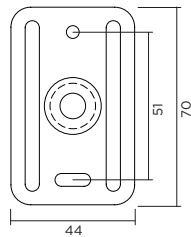
LED 2x3W | 220-240VAC | 50-60Hz | COB 3-step | incl. power supply

CE IP65 960°C 0,3m

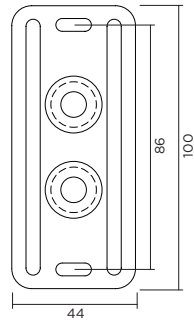
3000K | >80CRI | 2x250lm

white texture	<i>(This surface finish is not recommended for outdoor use.)</i>	719563W4
aluminium brushed	<i>(This surface finish is not recommended for outdoor use.)</i>	719263L4
white texture		719263W4
dark grey texture		719263D4
black texture		719263B4

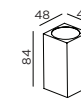
TRAIN 1.0 - wall base dimensions



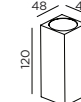
TRAIN 2.0 - wall base dimensions



DIMENSIONS



TRAIN 1.0



TRAIN 2.0

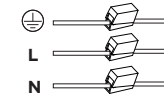
MOUNTING INSTRUCTION

- 1 Attach the wall base on the wall with screws

POWER CONNECTION

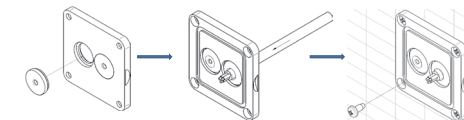
- 2 Make connection with the power supply

Interior: STANDARD version



Exterior: WATERPROOF Connection

IP-rated connections for wall fixtures: cable isolation for round cables \varnothing 4.5-7.5 mm, should be in the grommet. For cable use \varnothing 7.0-9.5 mm: replace the grommet with the other grommet in the bag.



Push the grommet into the back plate. Pull the cable through the back plate. Mount the back plate on the wall.

- 3 Attach the TRAIN on the wall base with the side screws

