

STATION

16-July-2016

1.0

LED 6W | 220-240VAC | 50-60Hz | COB 2-step | incl. PS | phase-cut dim

CE IP65 0.3m

3000K | >80CRI | 470lm

white texture
dark grey texture

314174W4
314174D4

1.0

LED 6W | 220-240VAC | 50-60Hz | COB 2-step | incl. PS | phase-cut dim

CE IP20 0.3m

3000K | >80CRI | 470lm

aluminium brushed (only for interior use)
white texture

314174L4
314374W4

2.0

LED 2xLED 3W | 220-240VAC | 50-60Hz | COB 2-step | incl. PS | phase-cut dim

CE IP65 0.3m

3000K | >80CRI | 2x260lm

white texture
dark grey texture

314274W4
314274D4

2.0

LED 2xLED 3W | 220-240VAC | 50-60Hz | COB 2-step | incl. PS | phase-cut dim

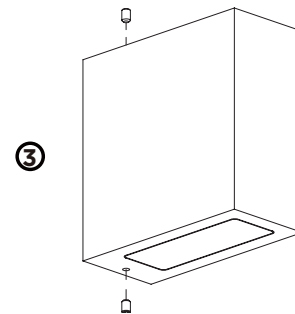
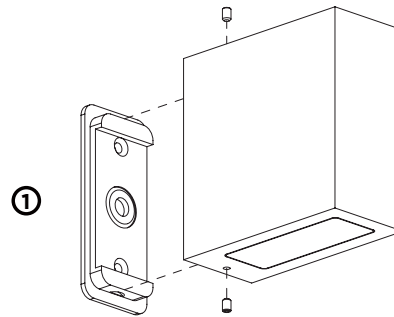
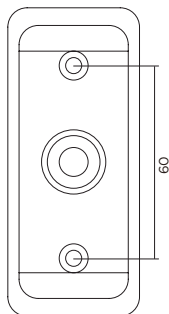
CE IP20 0.3m

3000K | >80CRI | 2x260lm

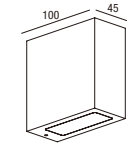
aluminium brushed (only for interior use)
white texture

314274L4
314474W4

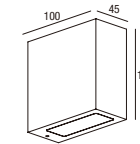
back plate dimensions



DIMENSIONS



STATION 1.0



STATION 2.0

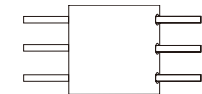
1 MOUNTING INSTRUCTION

Remove the back plate and fixate the back plate to the wall with screws.

2 POWER CONNECTION

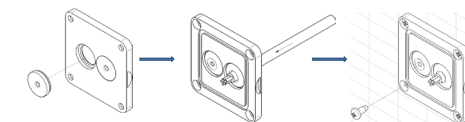
Connect the power supply.

Interior: STANDARD version



Exterior: WATERPROOF Connection

IP-rated connections for wall fixtures: cable isolation for round cables \varnothing 4.5-7.5 mm, should be in the grommet. For cable use \varnothing 7.0-9.5 mm: replace the grommet with the other grommet in the bag.



Push the grommet into the back plate.

Pull the cable through the back plate.

Mount the back plate on the wall.

3 Fixate the fixture base to the back plate.



WEVER & DUCRÉ
LIGHTING

www.weverducre.com

Wever & Ducre bvba Kwadestraat 153 bus 2.1 8800 Roeselare

INSTALLATION
INSTRUCTIONS