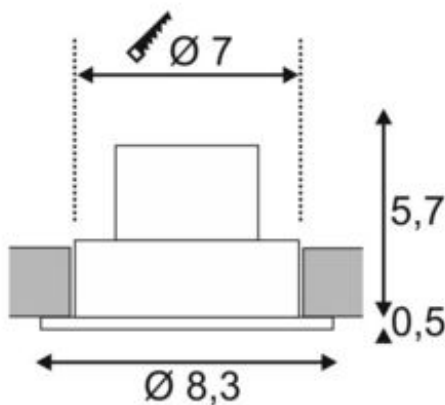
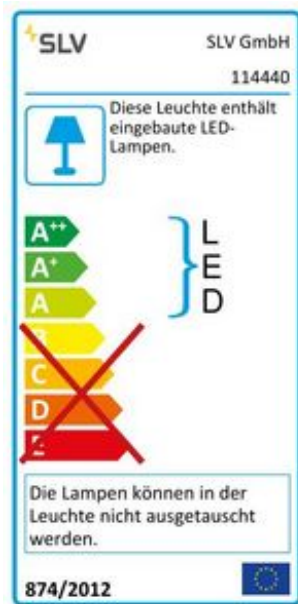
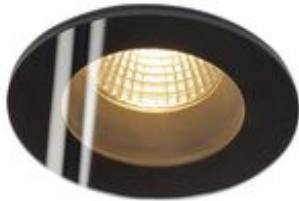
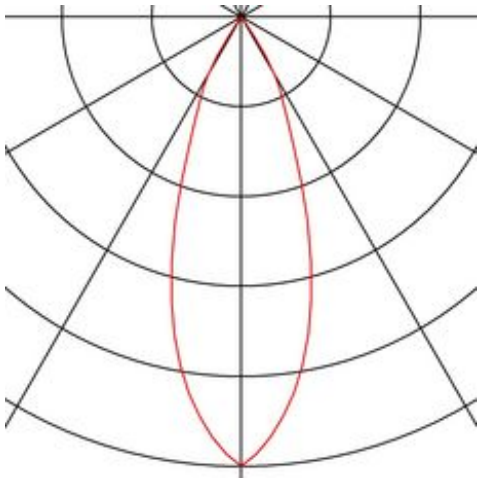


PATTA-F

recessed fitting, LED, 3000K, round, black, 38°, incl. driver



Article number	114440
Number of light sources	1
Max. wattage	12 Watt
Lamp	COB LED module
Light distribution type 1	Direct
Light distribution type 3	rotationally symmetric
Feed-in capability	No
Lamp included	Yes
Installation diameter	7 cm
Installation depth	7 cm
Height	6.2 cm
Diameter	8.3 cm
Net weight	0.319 kg
Gross weight	0.385 kg
Voltage	220-240 ~50/60 . 500 Volts
Protection class	II
IP-rating	IP 65
Beam angle	38 Degree
Material	Aluminium/glass
Colour	black
Way of mounting	Recessed ceiling mounting
Average lifespan	40000 Hours
Colour temperature	3000 Kelvin
Colour rendering index	80
Luminous flux	630 lm
Energy efficiency class	A++
fastCalcEnabled	Yes
ranking	400
Catalogue page	BIG WHITE 2017: 687



The innovative PATT A F recessed fitting is suitable for ceiling thicknesses of up to 20 mm. Rated IP65 it can be used outdoors or in damp areas. This set is available in black, white, or brushed aluminium as well as in round or square form. Equipped with a powerful, warm white premium COB LED in a tiltable mount, as well as dimmable LED driver included in the scope of supply, the set can be used in any lighting situation. The electrical connection is made directly to the 230V mains supply.