




# DIADE Floor

design Monica Armani

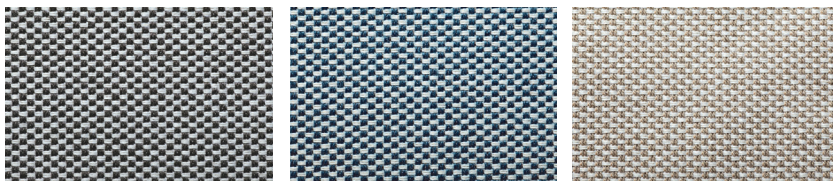
**LUCE  
PLAN**

Type:	Floor	
Light source:	direct/indirect version LED 54W + 29W <sup>(1)</sup> , 3000K dimmmable	EEL: A++
Product use :	Indoor	
Material:	Lamp body in aluminium Sound-absorbing panel in molded pet	
Colors:	structure: natural grey aluminium panel: white/black, white/blue, white/beige	
Description :	Created above all for the workplace, Diade can now be positioned anywhere in the space, to adapt to the shifting configurations of the office as it evolves in time.	



Insulation class:   

Reference code:	<b>Base</b> <b>D93/11</b>	1D9311000020	alu
	<b>Stem</b> <b>D96C</b>	1D9310000020	alu
	<b>Optic</b> <b>D96TFIC</b>	1D930TFIC020	alu
	<b>Panels 120 cm</b>		
	D93/1	1D93010000A1	white/black
		1D93010000A2	white/blue
		1D93010000A4	white/beige
	<b>Orizzontal support kit</b>		
	D93/6	1D9306000020	alu (kit 4 supports)



White/Black

White/Blue

White/Beige

<sup>(1)</sup> The LED lamps cannot be changed in the luminaire  
Power consumption by device

