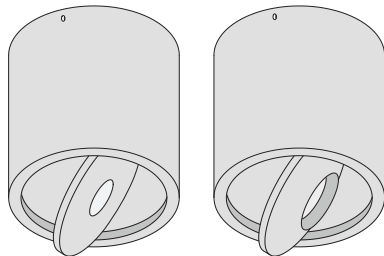


# FlatLED T1/T2 Surface Mounted

**DOXIS**  
LIGHTING FACTORY



## Instructions:

1. Remove mounting plate from housing using set screws
2. Pull cable through and screw mounting plate to ceiling
3. Connect 230V to driver
4. Connect LED to driver
5. Place housing over mounting plate  
(Make sure holes for set screws are aligned with folded edges)
6. Fix housing to mounting plate using set screws

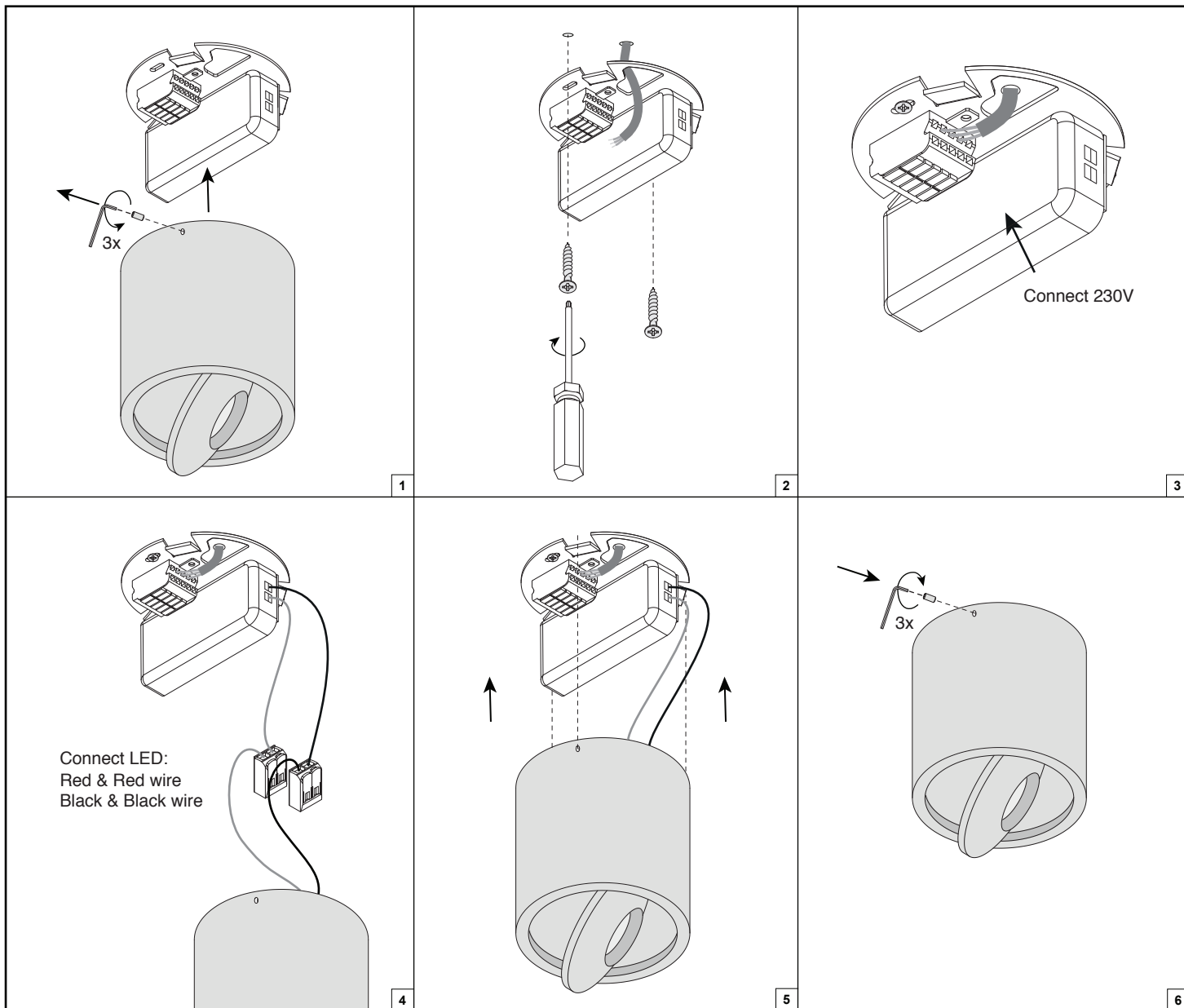
Forward voltages and nominal drive currents are mentioned on the label supplied with the product or can be found in the technical datasheet of the product.

Always use the correct driver.

Always install the driver according to the wiring schematics supplied with the driver.

Always check if multi-current drivers are set to the correct output current.

Doxis Lighting Factory cannot be held responsible for damage caused by using the wrong driver.



## Non dim & Mains dim

Brown L  
Yellow-Green PE  
Blue N

## 1-10V dim

Grey 1-10V -  
Black 1-10V +  
Yellow-Green PE  
Blue N  
Brown L

## Push dim

Black Push Btn L  
Yellow-Green PE  
Blue N  
Brown L

## DALI dim

Grey DA -  
Black DA +  
Yellow-Green PE  
Blue N  
Brown L

## ⚠ Attention!!

Always follow the instructions described in this document and store this document for future reference.

Do not touch LED surface. Warranty void if LED contact has taken place.  
Only to be installed by a qualified electrician.

Always make sure power is completely switched off when working on luminaire.

Doxis Lighting Factory NV cannot be held responsible for any damage caused by incorrect installation, modification, reparation or incorrect application/usage of the product.