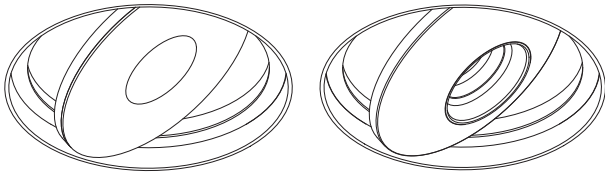


**FlatLED T1/T2**  
Trimless

**DOXIS**  
LIGHTING FACTORY



**Instructions:**

1. Drill a hole in the ceiling
2. Detach perforated bracket from housing and LED cassette
3. Slide bracket into the drilled hole
4. Fix bracket by screwing screws into ceiling
5. Pull cable through and place housing into ceiling
6. Adjust housing height and fix housing using screws on inside\*
7. Finish ceiling using plaster and paint
8. Connect LED cassette to driver
9. Connect 230V to driver
10. Insert driver and cassette into ceiling

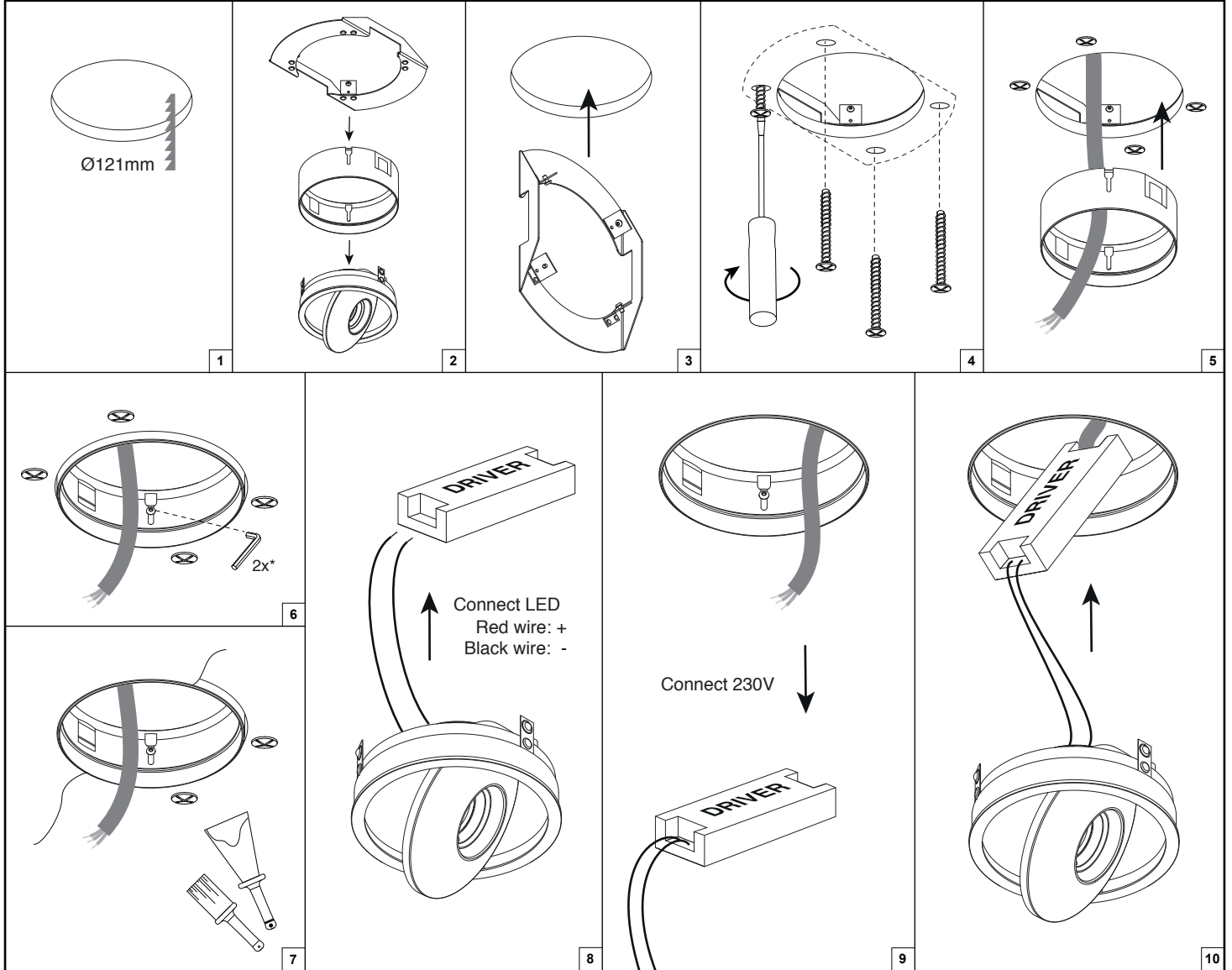
Forward voltages and nominal drive currents are mentioned on the label supplied with the product or can be found in the technical datasheet of the product.

**Always use the correct driver.**

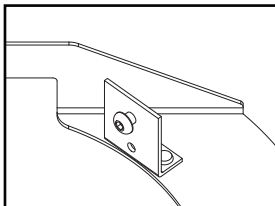
**Always install the driver according to the wiring schematics supplied with the driver.**

**Always check if multi-current drivers are set to the correct output current.**

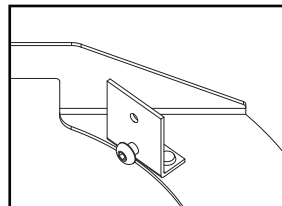
**Doxis Lighting Factory cannot be held responsible for damage caused by using the wrong driver.**



\* To find the right height to fix housing onto the bracket, set screws should be screwed into the following holes:

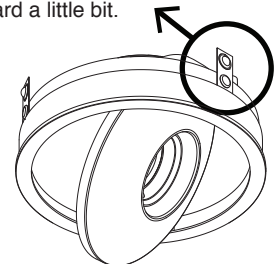


Ceiling thickness 9-15mm



Ceiling thickness 15-24mm

If cassette doesn't hold well inside trimless housing, clips can be bent outward a little bit.



**Attention!!**

Always follow the instructions described in this document and store this document for future reference.

Do not touch LED surface. Warranty void if LED contact has taken place.

Only to be installed by a qualified electrician.

Always make sure power is completely switched off when working on luminaire.

**Doxis Lighting Factory NV cannot be held responsible for any damage caused by incorrect installation, modification, reparation or incorrect application/usage of the product.**

**Air circulation notice:**

Do not topload with insulation materials

