

# FLOS

## USB ROUND IL

Lamps description	1 x QR-CBC-51 GU5.3 Max 50W
Voltage (V)	12
Environment	Indoor

### OPTICAL

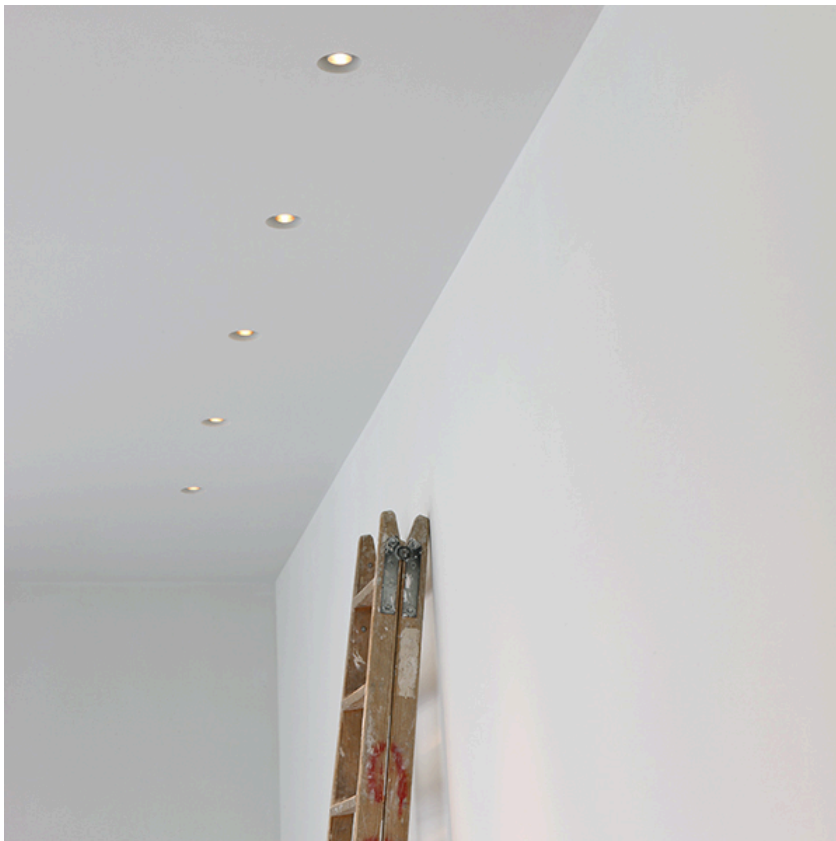
Aiming	Fixed
Light distribution symmetry	Direct

### ELECTRICAL

Transformer availability	Separate item
Transformer mounting	Remote
Transformer type	Electronic
Emergency	Without
Insulation class	Class III

### PHYSICAL

Weight (kg)	2
-------------	---

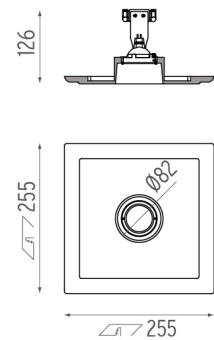


### USB Round IL

designed by FLOS Soft Architecture

Recessed luminaire for 12V halogen lamp. 220/240V, 50/60Hz. Adjustable by means of "leading and trailing edge". Remote transformer not included.

● SA.3017.1 Raw



### CERTIFICATIONS



## USB Round IL . Accessories

### Transformer



60.8139

#### Electronic transformer 20/105W

Electronic transformer 12V.  
220/240V, 50/60Hz.  
Adjustable by means of  
"leading and trailing edge".

### Optical



08.8270.00

#### Anti-Glare

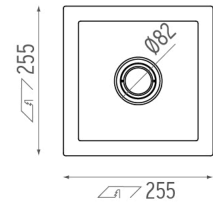
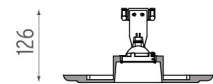
Anti-Glare. 40° cut off  
accessory ring.



#### USB Round IL designed by FLOS Soft Architecture

Recessed luminaire for 12V halogen  
lamp. 220/240V, 50/60Hz. Adjustable  
by means of "leading and trailing  
edge". Remote transformer not  
included.

SA.3017.1 Raw



#### CERTIFICATIONS



## USB Round IL . Lamps



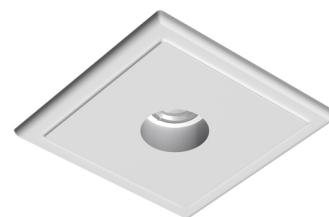
### QR-CBC-51 50W GU5.3

**Lamp Watt:**  
50 W

**Lamp category:**  
Halogen low voltage

**Socket:**  
GU5.3

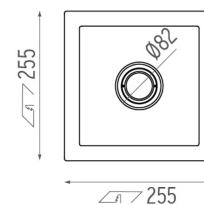
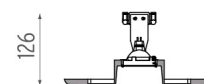
**Lamp type:**  
QR-CBC-51



### USB Round IL designed by FLOS Soft Architecture

Recessed luminaire for 12V halogen lamp. 220/240V, 50/60Hz. Adjustable by means of "leading and trailing edge". Remote transformer not included.

● SA.3017.1 Raw



### CERTIFICATIONS

