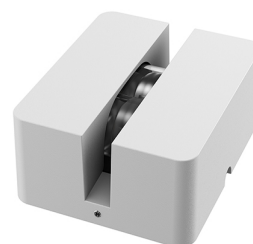


FENESTRA

Beam angle	151°
Mounting	Floor
Lamps description	Power Led: 5,5W - 304 lm ≠ FIXT 183 lm - 3000K/CRI 80 - 100-240V
Environment	Indoor, Outdoor
Notes	We recommend using a connection system with a degree of protection greater than or equal to the degree of protection of the luminaire.

Technical description	Luminaire body in die-cast aluminum EN AB-47100 (low copper content). High-resistance coating: after a sandblasting treatment of all components to make the surface porous and ensure a greater adhesion of the paint, the external coating is applied with a double layer with epoxy powders according to the QUALICOAT standard. The first layer of epoxy powder gives chemical and mechanical resistance, the second finishing layer of polyester powder ensures resistance to UV rays and atmospheric agents. The painted surfaces are treated with alkaline and acidic washes, then rinsed with demineralized water, subjected to a chemical conversion treatment to protect against oxidation. Thanks to the use of a dual LED source and two laminar emitting lenses, it guarantees a coverage of 270° with homogeneous distribution and excellent color uniformity. UV-stabilized polycarbonate diffuser, silicone seal. Each luminaire is equipped with a mechanical adjustment system to compensate for the inclination of the sills, and to allow the correct orientation of the luminous beam.
------------------------------	--



Fenestra

designed by FLOS Outdoor

Luminaire for outdoor use for installation in a window compartment with LED light source. Integrated 100/240V power source. Equipped with an 1000 mm section of outgoing neoprene cable.

● F2261001	White
● F2261006	Grey
● F2261033	Anthracite
● F2261030	Black
● F2261018	Deep brown

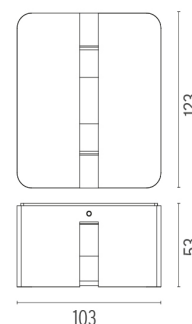
ELECTRICAL

Transformer type	Electronic
Transformer availability	Inclusi
Transformer mounting	Integral
Emergency	Without
Voltage (V)	100/240

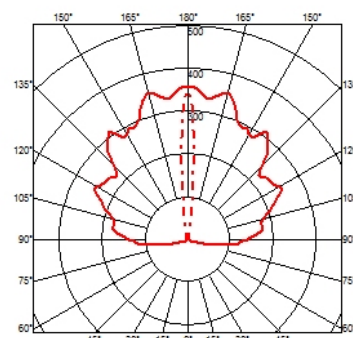
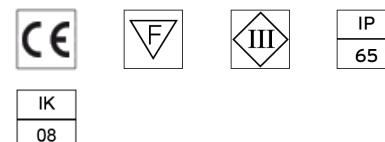
PHYSICAL

IK rating	08
Aiming	Fixed
Weight (kg)	0,70
Number of heads	1

DIMENSIONS



CERTIFICATIONS





Fenestra . Lamps



Power LED

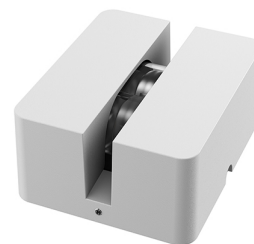
Lamp category:
LED

Socket:

Special base

Lamp type:

Power LED



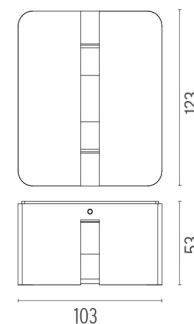
Fenestra

designed by FLOS Outdoor

Luminaire for outdoor use for installation in a window compartment with LED light source. Integrated 100/240V power source. Equipped with an 1000 mm section of outgoing neoprene cable.

● F2261001	White
● F2261006	Grey
● F2261033	Anthracite
● F2261030	Black
● F2261018	Deep brown

DIMENSIONS



CERTIFICATIONS

