

## FENESTRA

<b>Beam angle</b>	151°
<b>Mounting</b>	Floor
<b>Lamps description</b>	Power Led: 5,5W - 274 lm ≠ FIXT 165 lm - 2700K/CRI 80 - 100-240V
<b>Environment</b>	Indoor, Outdoor
<b>Notes</b>	We recommend using a connection system with a degree of protection greater than or equal to the degree of protection of the luminaire.

<b>Technical description</b>	Luminaire body in die-cast aluminum EN AB-47100 (low copper content). High-resistance coating: after a sandblasting treatment of all components to make the surface porous and ensure a greater adhesion of the paint, the external coating is applied with a double layer with epoxy powders according to the QUALICOAT standard. The first layer of epoxy powder gives chemical and mechanical resistance, the second finishing layer of polyester powder ensures resistance to UV rays and atmospheric agents. The painted surfaces are treated with alkaline and acidic washes, then rinsed with demineralized water, subjected to a chemical conversion treatment to protect against oxidation. Thanks to the use of a dual LED source and two laminar emitting lenses, it guarantees a coverage of 270° with homogeneous distribution and excellent color uniformity. UV-stabilized polycarbonate diffuser, silicone seal. Each luminaire is equipped with a mechanical adjustment system to compensate for the inclination of the sills, and to allow the correct orientation of the luminous beam.
------------------------------	--



### Fenestra

designed by FLOS Outdoor

Luminaire for outdoor use for installation in a window compartment with LED light source. Integrated 100/240V power source. Equipped with an 1000 mm section of outgoing neoprene cable.

	F2260001	White
	F2260006	Grey
	F2260033	Anthracite
	F2260030	Black
	F2260018	Deep brown

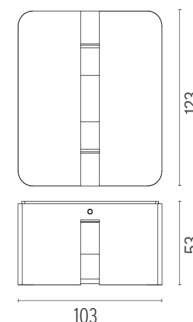
### ELECTRICAL

<b>Transformer type</b>	Electronic
<b>Transformer availability</b>	Inclusi
<b>Transformer mounting</b>	Integral
<b>Emergency</b>	Without
<b>Voltage (V)</b>	100/240

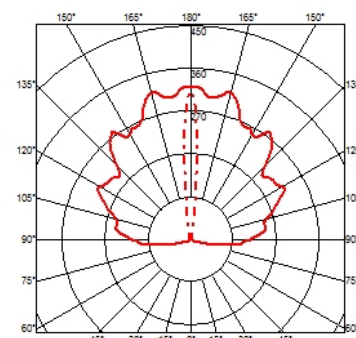
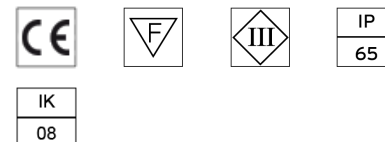
### PHYSICAL

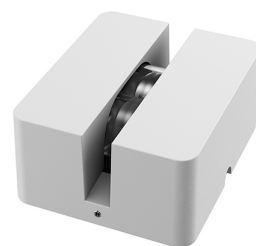
<b>IK rating</b>	08
<b>Aiming</b>	Fixed
<b>Weight (kg)</b>	0,70
<b>Number of heads</b>	1

### DIMENSIONS



### CERTIFICATIONS





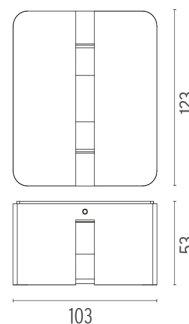
## Fenestra

designed by FLOS Outdoor

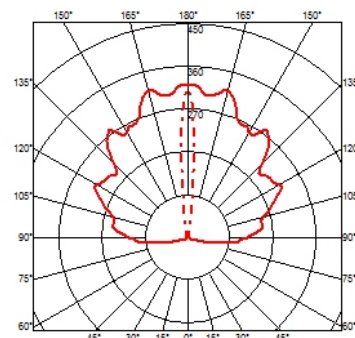
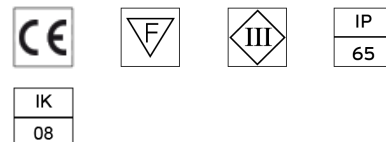
Luminaire for outdoor use for installation in a window compartment with LED light source. Integrated 100/240V power source. Equipped with an 1000 mm section of outgoing neoprene cable.

● F2260001	White
● F2260006	Grey
● F2260033	Anthracite
● F2260030	Black
● F2260018	Deep brown

## DIMENSIONS



## CERTIFICATIONS



## Fenestra . Lamps



**Power LED**

**Lamp category:**

LED

**Socket:**

Special base

**Lamp type:**

Power LED