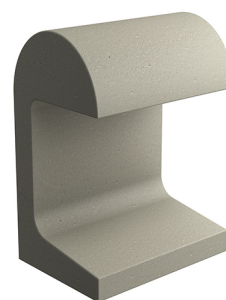


CASTING CONCRETE

Beam angle	82°
Mounting	Ground
Lamps description	Power Led: 9W - 800 lm ≠ FIXT 526 lm - 4000K/CRI 80 - 220-240V
Environment	Outdoor
Notes	We recommend using a connection system with a degree of protection greater than or equal to the degree of protection of the luminaire.

Technical description	The body of the Round version is made from a mould, with poured concrete consisting of cement, fine inert materials for aggregating purposes, and reinforcing fibers. Each article is manufactured individually with a handcrafted process: minor aesthetic and color differences between one luminaire and another are the sign of the uniqueness of each lamp. Each luminaire has a frosted polycarbonate diffuser glued to the heat sink of the product to ensure a watertight seal (UV stabilized to minimise yellowing). The luminaire is provided with a segment of outgoing cable in neoprene, with a kit of electrical connection for single multicore cable, and with dowels for installation on full and solid surfaces. The fixing plate for installation on cement paving, poured concrete, or on plinth is available as an accessory.
------------------------------	--



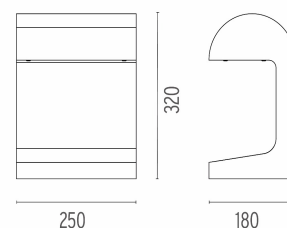
Casting Concrete

designed by Vincent Van Duysen

Collection of outdoor bollard lights with LED light source. 220/240V power supply integrated.

● FI 332089 Concrete

DIMENSIONS



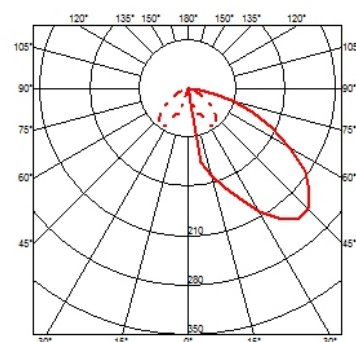
ELECTRICAL

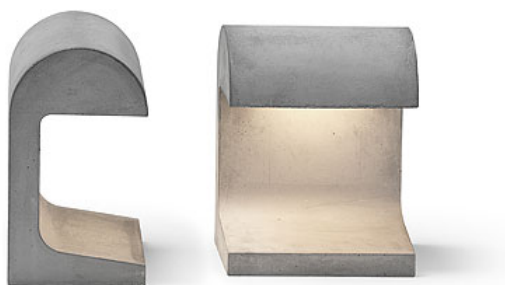
Transformer type	Electronic
Transformer availability	Included
Transformer mounting	Integral
Emergency	Without
Voltage (V)	220/240

PHYSICAL

Aiming	Fixed
Weight (kg)	13
Number of heads	1

CERTIFICATIONS





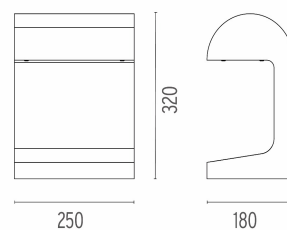
Casting Concrete

designed by Vincent Van Duysen

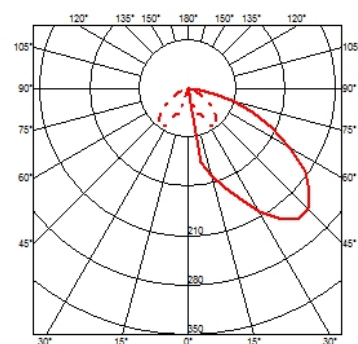
Collection of outdoor bollard lights with LED light source. 220/240V power supply integrated.

● FI 332089 Concrete

DIMENSIONS



CERTIFICATIONS



Casting Concrete .Accessories

Electrical



○ FI206000

3/4 way terminal block 3 poles IP68

7-12 mm cables

FLOS

Casting Concrete .Accessories

Structural



○ F1209000

Base plate with bolt



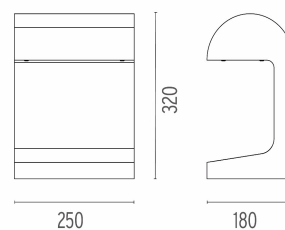
Casting Concrete

designed by Vincent Van Duysen

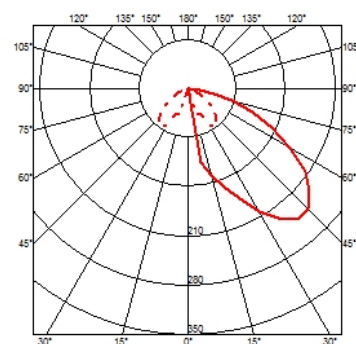
Collection of outdoor bollard lights with LED light source. 220/240V power supply integrated.

● F1332089 Concrete

DIMENSIONS



CERTIFICATIONS



Casting Concrete . Lamps



Power LED

Lamp category:
LED

Socket:
Special base

Lamp type:
Power LED