

## LIGHTLIGHT® WALL/MAX-W|DISC III

Number of heads	1
Mounting	LightLight® Wall
Lamps description	QR-III G53 35/60W or LED QR-III
Voltage (V)	12
Environment	Indoor
Notes	Please ask Flos architectural sales team about QR-III lamps LED retrofit compatibility.



### OPTICAL

Light controller description	Bare lamps
Aiming	Directional
Light distribution symmetry	Symmetric
Beam angle	24°

**LightLight® Wall/Max-W|Disc III**  
designed by Hans Buschfeld

Spotlight to be installed on 12V wall track system. Track adapter integrated.

### ELECTRICAL

Transformer availability	Separate item
Transformer mounting	Remote
Emergency	Without
Insulation class	Class III

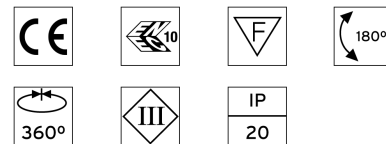
● BU60051W	White
● BU60051A	Anodised aluminium
● BU60051B	Black
● BU60051P	Polished aluminium

### PHYSICAL

Spot diameter (mm)	115
Construction material	Aluminium
Weight (kg)	0,11

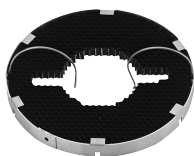


### CERTIFICATIONS



## LightLight® Wall/Max-W|Disc III . Accessories

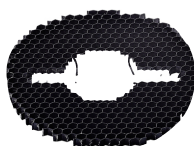
### Optical



● RFI8557

#### Honeycomb anti-glare screen

"Honeycomb" anti-glare screen: in thin, black-painted aluminium sheets.



● BU60021

● BU60022

#### Honeycomb anti-glare screen. Halogen

"Honeycomb" anti-glare screen in black painted or silver aluminium sheets for halogen light sources.



● BU60023

● BU60024

#### Honeycomb anti-glare screen. LED

"Honeycomb" anti-glare screen in black painted or silver aluminium sheets for LED light sources.



### LightLight® Wall/Max-W|Disc III designed by Hans Buschfeld

Spotlight to be installed on 12V wall track system. Track adapter integrated.

● BU60051W	White
● BU60051A	Anodised aluminium
● BU60051B	Black
● BU60051P	Polished aluminium

## LightLight® Wall/Max-W|Disc III . Lamps



60.6398

#### QR-III

**Lamp Watt:**  
35 W

**Lamp category:**  
Halogen low voltage

**Socket:**  
G53

**Lamp angle:**  
24 °

**Color temperature (K):**  
3000 °K

**Catalog reference:**  
60.6398

**Lamp type:**  
QR-III



60.6863

#### QR-III

**Lamp Watt:**  
60 W

**Lamp category:**  
Halogen low voltage

**Socket:**  
G53

**Lamp angle:**  
8 °

**Color temperature (K):**  
3000 °K

**Catalog reference:**  
60.6863

**Lamp type:**  
QR-III



60.6864

#### QR-III

**Lamp Watt:**  
60 W

**Lamp category:**  
Halogen low voltage

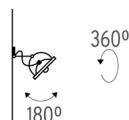
**Socket:**  
G53

**Lamp angle:**  
24 °

**Color temperature (K):**  
3000 °K

**Catalog reference:**  
60.6864

**Lamp type:**  
QR-III



### CERTIFICATIONS



## LightLight® Wall/Max-W|Disc III . Lamps



60.6962

**LED QR-III**

**Lamp Watt:**

12 W

**Lamp category:**

LED

**Socket:**

G53

**Lamp angle:**

24 °

**Color temperature (K):**

2800 °K

**Catalog reference:**

60.6962





**Lamp type:**

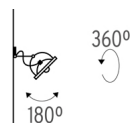
LED QR-III



**LightLight® Wall/Max-W|Disc III**  
designed by Hans Buschfeld

Spotlight to be installed on 12V wall track system. Track adapter integrated.

	BU60051W	White
	BU60051A	Anodised aluminium
	BU60051B	Black
	BU60051P	Polished aluminium



### CERTIFICATIONS

