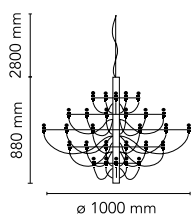
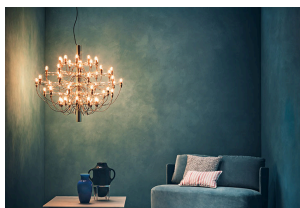


## 2097/50

by Gino Sarfatti , 1958

Suspension lamp providing diffused light. Steel central structure with brass arms, both available either chromium-plated or gilded. Steel ceiling fitting and rose.



Mounting	Pendant
Environment	Indoor
Finish	Chrome, Brass
Weight	9.2 Kg
Light sources available	50 x LED E14 2,7W 2700K 150lm - RF25316

Emergency	Without
Voltage	220-250V
Power	50x MAX15
Battery	No
Supply included	Yes

Cord Length	2800 mm
Materials	Steel

Colors	<div>● A1500057 - Chrome</div> <div>● A1500059 - Brass</div>
--------	--