

UT PRO 175 GA-69 ON BOARD DIMMER INCLUDED

Number of heads	1
Mounting	Track mounting GA
Lamps description	LED Array 35,3W 3400 lm 4000K CRI 90
Luminaire luminous flux	See reference number
Voltage (V)	120/270
Environment	Indoor
Notes	Screening crosspiece, lenses and honeycomb directly installable on the head of the luminaire without needing any fastening accessory. Installation compatible with honeycomb + lense at the same time.



OPTICAL

Reflector finish	Borosilicate glass reflector
Aiming	Adjustable
Light distribution symmetry	Symmetric
Beam angle	35° Flood

UT Pro 175 GA-69 On Board Dimmer Included

designed by FLOS Architectural

Spotlight to be installed in standard 3-phase track with LED light source. 120-270V power supply integrated.<nextline>

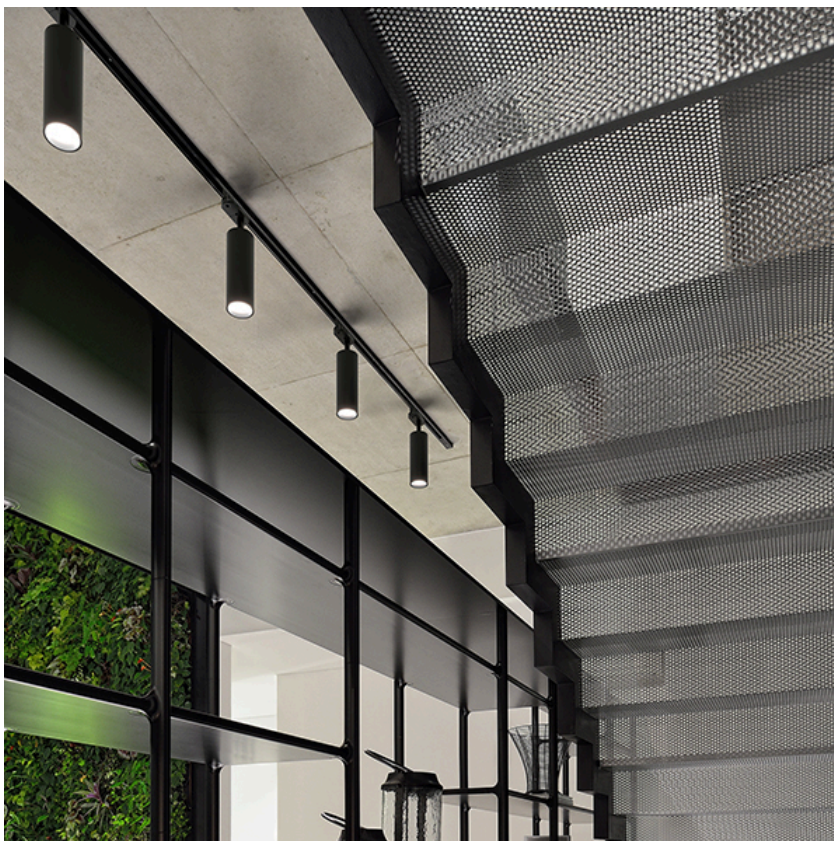
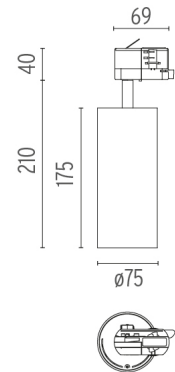
ELECTRICAL

Transformer availability	Included
Transformer mounting	Integral
Transformer type	Electronic dimmable
Emergency	Without
Insulation class	Class I

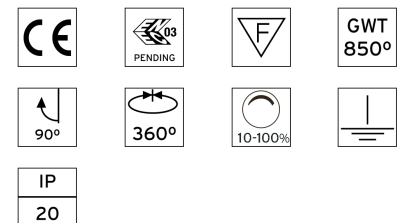
- 09.7318.40 - 2941lm White
- 09.7318.14 - 2941lm Black

PHYSICAL

Spot diameter (mm)	75
Construction material	Aluminium



CERTIFICATIONS



UT Pro 175 GA-69 On Board Dimmer Included . Accessories

Optical



● 08.9108.00

Screening Crosspiece



○ 08.9109.00

Elliptical Lens



○ 08.9110.00

Flood Lens



● 08.9107.00

Honeycomb



● 08.9111.00

Snoot Shielding Cone

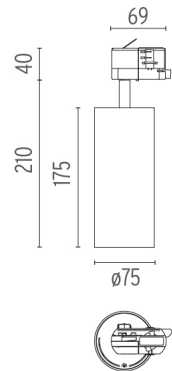


UT Pro 175 GA-69 On Board Dimmer Included

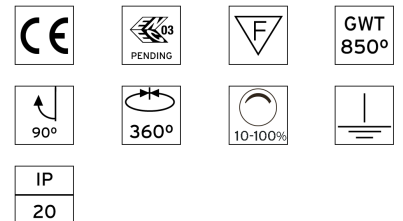
designed by FLOS Architectural

Spotlight to be installed in standard 3-phase track with LED light source. 120-270V power supply integrated.<nextline>

- 09.7318.40 - 2941lm White
- 09.7318.14 - 2941lm Black



CERTIFICATIONS



UT Pro 175 GA-69 On Board Dimmer Included . Lamps



LED Array

Lamp category:

LED

Socket:

Special base

Lamp type:

LED Array

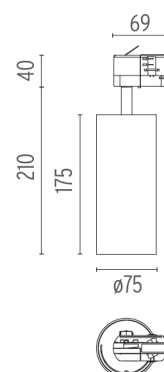


UT Pro 175 GA-69 On Board Dimmer Included

designed by FLOS Architectural

Spotlight to be installed in standard 3-phase track with LED light source. 120-270V power supply integrated.< nextline>

- 09.7318.40 - 2941lm White
- 09.7318.14 - 2941lm Black



CERTIFICATIONS

