

UT SPOT TRACK Ø86

Number of heads	1
Mounting	Track mounting
Lamps description	LED Array High Performances 32,8W 3116 lm 3000K CRI 90
Luminaire luminous flux	See reference number
Voltage (V)	220/240
Environment	Indoor
Notes	FLOS three-phase lighting track luminaires are designed and fully tested for tracks recommended by FLOS. Compatibility is guaranteed with three-phase track produced by Nordic Aluminium. Compatibility with Eutrac under request.



OPTICAL

Reflector finish	Aluminum
Aiming	Adjustable
Light distribution symmetry	Symmetric
Beam angle	24° Medium

UT Spot Track Ø86

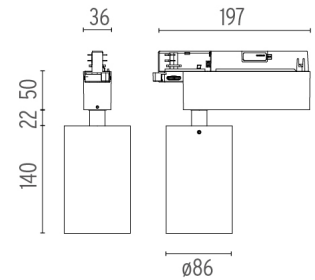
designed by FLOS Architectural

Spotlight to be installed on 3-phase track, with LED light source. 220-240V, 50-60Hz power supply integrated.

- 09.4887.30A - 2089lm White
- 09.4887.14A - 2089lm Black

ELECTRICAL

Transformer availability	Included
Transformer mounting	Integral
Transformer type	Electronic
Emergency	Without
Insulation class	Class II

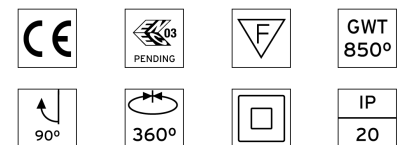


PHYSICAL

Spot diameter (mm)	86
Construction material	Aluminium
Weight (kg)	0,75



CERTIFICATIONS



UT Spot Track Ø86 . Accessories

Optical



○ 08.8163.68

Elliptical lens

Elliptical light distribution lens in 4 mm thick tempered glass.



○ 08.8175.68

Flood lens

Flood lens made in press glass.



● 08.8495.14

Honeycomb

"Honeycomb" anti-glare screen: in thin, black-painted aluminium sheets.



● 08.8410.00

Holding ring

Holding ring



● 08.8411.00

Screening crosspiece

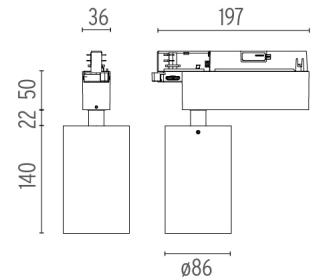


UT Spot Track Ø86 designed by FLOS Architectural

Spotlight to be installed on 3-phase track, with LED light source. 220-240V, 50-60Hz power supply integrated.

○ 09.4887.30A - 2089lm White

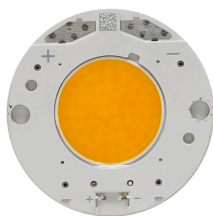
● 09.4887.14A - 2089lm Black



CERTIFICATIONS



UT Spot Track Ø86 . Lamps



LED Array

Lamp category:

LED

Socket:

Special base

Lamp type:

LED Array

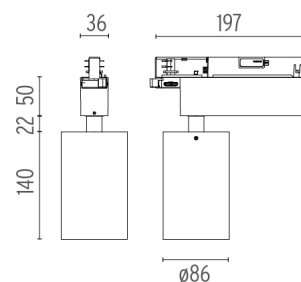


UT Spot Track Ø86

designed by FLOS Architectural

Spotlight to be installed on 3-phase track, with LED light source. 220-240V, 50-60Hz power supply integrated.

- 09.4887.30A - 2089lm White
- 09.4887.14A - 2089lm Black



CERTIFICATIONS

