

UT SPOT TRACK Ø57

Number of heads	1
Mounting	Track mounting
Lamps description	LED Array 21,5W 2150 lm 4000K CRI 90
Luminaire luminous flux	See reference number
Voltage (V)	220/240
Environment	Indoor
Notes	Screening crosspiece, lenses and Honeycomb directly installable on the head of the luminaire without needing any fastening accessory. Installation compatible with Honeycomb + Lense at the same time. FLOS three-phase lighting track luminaires are designed and fully tested for tracks recommended by FLOS. Compatibility is guaranteed with three-phase track produced by Nordic Aluminium. Compatibility with Eutrac under request.



UT Spot Track Ø57
designed by FLOS Architectural

Spotlight to be installed on 3-phase track, with LED light source. 220-240V, 50-60Hz power supply integrated.

- 09.4481.30A - 1728lm White
- 09.4481.14A - 1728lm Black

OPTICAL

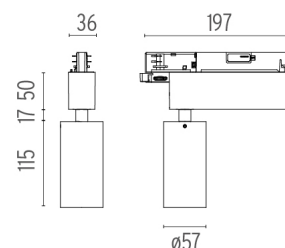
Reflector finish	Aluminum
Aiming	Adjustable
Light distribution symmetry	Symmetric
Beam angle	13° Spot

ELECTRICAL

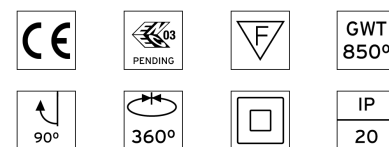
Transformer availability	Included
Transformer mounting	Integral
Transformer type	Electronic
Emergency	Without
Insulation class	Class II

PHYSICAL

Spot diameter (mm)	57
Construction material	Aluminium
Weight (kg)	0,57



CERTIFICATIONS



UT Spot Track Ø57 . Accessories

Optical



● 08.8429.00

Screening Crosspiece



○ 08.8431.00

Elliptical Lens



○ 08.8432.00

Flood Lens



● 08.8428.00

Honeycomb



● 08.0526.00

Snoot Shielding Cone

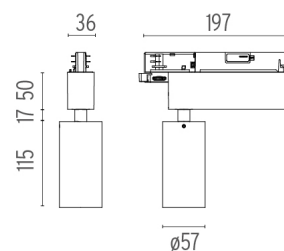


UT Spot Track Ø57
designed by FLOS Architectural

Spotlight to be installed on 3-phase track, with LED light source.
220-240V, 50-60Hz power supply integrated.

○ 09.4481.30A - 1728lm White

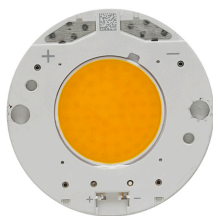
● 09.4481.14A - 1728lm Black



CERTIFICATIONS



UT Spot Track Ø57 . Lamps



LED Array

Lamp category:

LED

Socket:

Special base

Lamp type:

LED Array

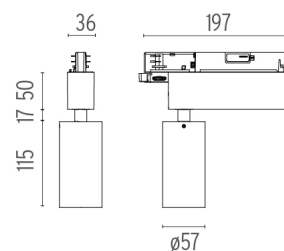


UT Spot Track Ø57

designed by FLOS Architectural

Spotlight to be installed on 3-phase track, with LED light source.
220-240V, 50-60Hz power supply integrated.

- 09.4481.30A - 1728lm White
- 09.4481.14A - 1728lm Black



CERTIFICATIONS

