

## FIND ME 2 MONO POINT (TRIM/NO TRIM)

<b>Number of heads</b>	1
<b>Mounting</b>	Ceiling recessed
<b>Lamps description</b>	Power LED DC Max 850 mA 10W 900 lm 3000K CRI 90
<b>Luminaire luminous flux</b>	Extreme Cut-off. See reference number
<b>Environment</b>	Indoor
<b>Notes</b>	Remote power supply to be installed in an accesible place. The Mono Point version is supplied with a frame, which should be fitted to the product if a Trim version is required, or without, if a No Trim version is required. Accessories included (honeycomb and screening crosspiece).

### OPTICAL

<b>Aiming</b>	Adjustable
<b>Light distribution symmetry</b>	Symmetric
<b>Beam angle</b>	25°

### ELECTRICAL

<b>Transformer availability</b>	Separate item
<b>Transformer mounting</b>	Remote
<b>Transformer type</b>	Electronic
<b>Emergency</b>	Without
<b>Insulation class</b>	Class III

### PHYSICAL

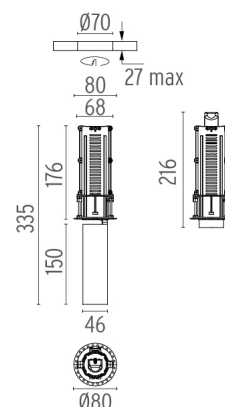
<b>Recessed depth (mm)</b>	187
<b>Construction material</b>	Aluminium
<b>Weight (kg)</b>	0,54



**Find Me 2 Mono Point (Trim/No Trim)**  
designed by Jorge Herrera

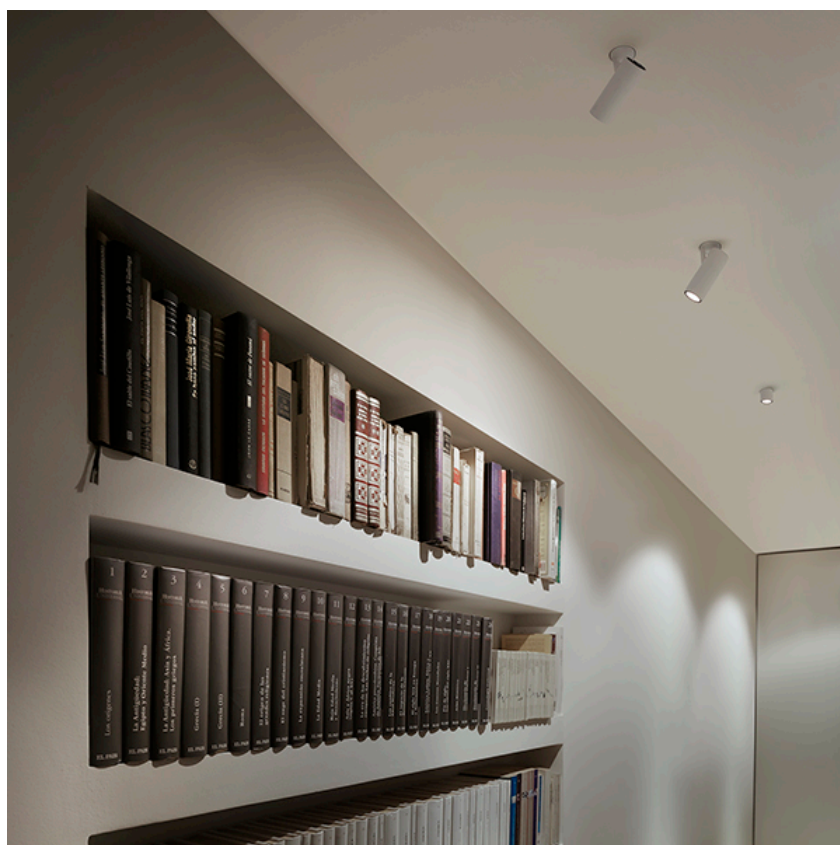
Recessed adjustable luminaire for indoor application. Remote power supply not included.

● 09.3708.30A - 673lm	White
● 09.3708.06A - 673lm	Chrome
● 09.3708.14A - 673lm	Black



### CERTIFICATIONS

CE	03 PENDING	F	GWT 850°
70°	360°	III	IP 20



## Find Me 2 Mono Point (Trim/No Trim) . Accessories

### Power Supply



60.8530

#### Constant Current Power Supply for LED. 25-50W

Continuous current power supply of 25-50W, 220/240V - 50/60Hz with power current selected through adjustable 350/500/550/650/700/750/850/900/1050mA Dali switch, 1-10V switch or push dimming.

Maximum length of 1.5 mm2 secondary conductor (m): 10

Maximum length of 2.5 mm2 secondary conductor (m): 15



60.8911

#### Constant Current Power Supply for LED. 15-20W

Non dimmable continuous current power supply of 15-20W, 110/240V - 50/60Hz, with power current selected through adjustable 350/500/550/700/850/900 mA switch.

Maximum length of 1.5 mm2 secondary conductor (m): 20

Maximum length of 2.5 mm2 secondary conductor (m): 50



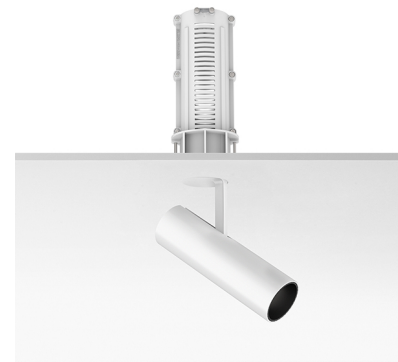
60.8529

#### Constant Current Power Supply for LED. 10W-110/12W-240V

Continuous current power supply of 10W, 110V / 12W, 240V - 50/60Hz with 700 mA supply voltage.

Maximum length of 1.5 mm2 secondary conductor (m): 20

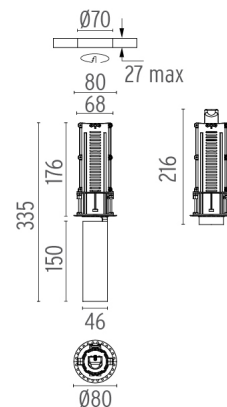
Maximum length of 2.5 mm2 secondary conductor (m): 50



**Find Me 2 Mono Point (Trim/No Trim)**  
designed by Jorge Herrera

Recessed adjustable luminaire for indoor application. Remote power supply not included.

09.3708.30A - 673lm	White
09.3708.06A - 673lm	Chrome
09.3708.14A - 673lm	Black



## Find Me 2 Mono Point (Trim/No Trim) . Lamps



### Power LED

#### Lamp category:

LED

#### Socket:

Special base

#### Lamp type:

Power LED

### CERTIFICATIONS

