

FIND ME 2 MONO POINT (TRIM/NO TRIM)

Number of heads	1
Mounting	Ceiling recessed
Lamps description	Power LED DC Max 850 mA 10W 860 lm 2700K CRI 90
Luminaire luminous flux	Extreme Cut-off. See reference number
Environment	Indoor
Notes	Remote power supply to be installed in an accesible place. The Mono Point version is supplied with a frame, which should be fitted to the product if a Trim version is required, or without, if a No Trim version is required. Accessories

OPTICAL

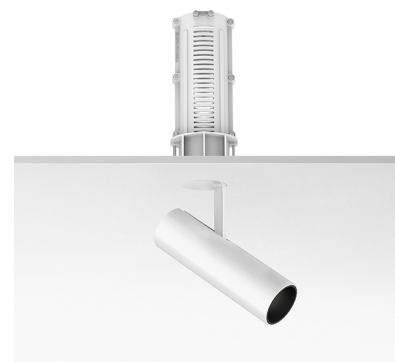
Aiming	Adjustable
Light distribution symmetry	Symmetric
Beam angle	25°

ELECTRICAL

Transformer availability	Separate item
Transformer mounting	Remote
Transformer type	Electronic
Emergency	Without
Insulation class	Class III

PHYSICAL

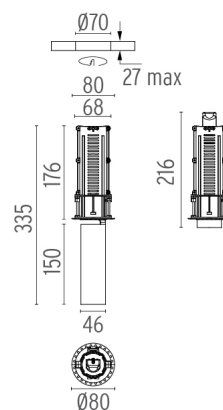
Recessed depth (mm)	187
Construction material	Aluminium
Weight (kg)	0,54



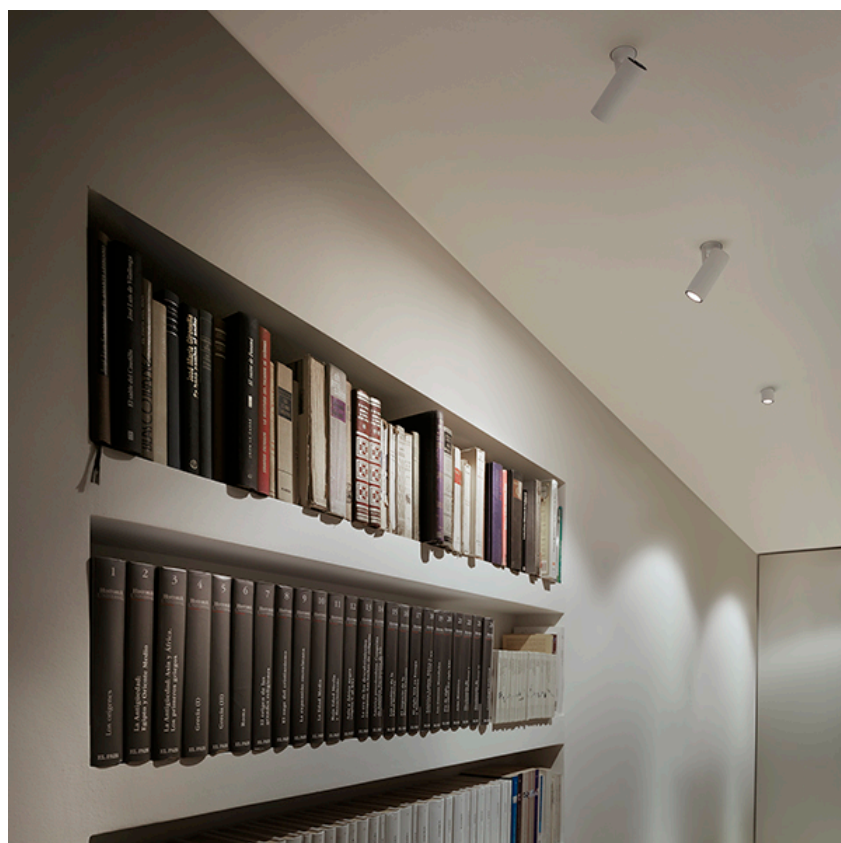
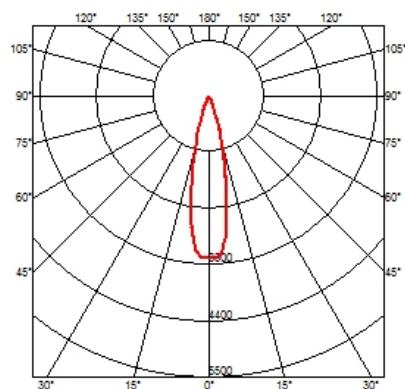
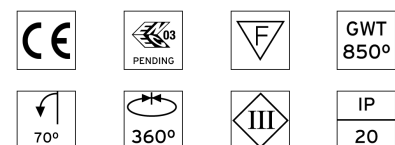
Find Me 2 Mono Point (Trim/No Trim)
designed by Jorge Herrera

Recessed adjustable luminaire for indoor application. Remote power supply not included.

● 09.3707.30 - 632lm	White
● 09.3707.06 - 632lm	Chrome
● 09.3707.14 - 632lm	Black



CERTIFICATIONS



Find Me 2 Mono Point (Trim/No Trim) . Accessories

Power Supply



60.8530

Constant Current Power Supply for LED. 25-50W

Continuous current power supply of 25-50W, 220/240V - 50/60Hz with power current selected through adjustable 350/500/550/650/700/750/850/900/1050mA Dali switch, 1-10V switch or push dimming.

Maximum lenght of 1.5 mm2 secondary conductor (m): 10

Maximum lenght of 2.5 mm2 secondary conductor (m): 15



60.8911

Constant Current Power Supply for LED. 15-20W

Non dimmable continuous current power supply of 15-20W, 110/240V - 50/60Hz, with power current selected through adjustable 350/500/550/700/850/900 mA switch.

Maximum lenght of 1.5 mm2 secondary conductor (m): 20

Maximum lenght of 2.5 mm2 secondary conductor (m): 50



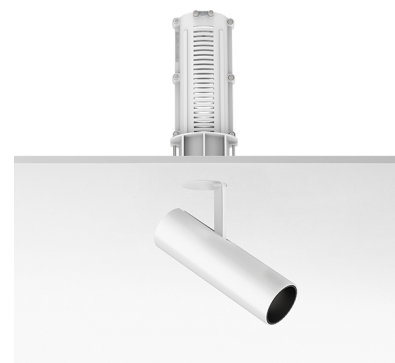
60.8529

Constant Current Power Supply for LED. 10W-110/12W-240V

Continuous current power supply of 10W, 110V / 12W, 240V - 50/60Hz with 700 mA supply voltage.

Maximum lenght of 1.5 mm2 secondary conductor (m): 20

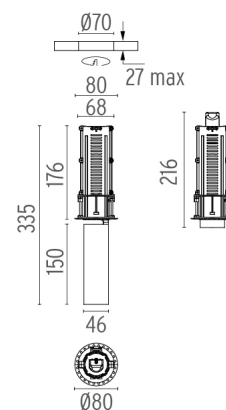
Maximum lenght of 2.5 mm2 secondary conductor (m): 50



Find Me 2 Mono Point (Trim/No Trim)
designed by Jorge Herrera

Recessed adjustable luminaire for indoor application. Remote power supply not included.

09.3707.30 - 632lm	White
09.3707.06 - 632lm	Chrome
09.3707.14 - 632lm	Black



Find Me 2 Mono Point (Trim/No Trim) . Lamps



Power LED

Lamp category:

LED

Socket:

Special base

Lamp type:

Power LED

CERTIFICATIONS

