

## FIND ME I DOUBLE POINT

<b>Number of heads</b>	2
<b>Mounting</b>	Ceiling recessed
<b>Lamps description</b>	2 x Power LED DC 500 mA 6W 600 lm 3000K CRI 90
<b>Luminaire luminous flux</b>	Extreme Cut-off. See reference number
<b>Environment</b>	Indoor
<b>Notes</b>	Accessories included (honeycomb and screening crosspiece).

## OPTICAL

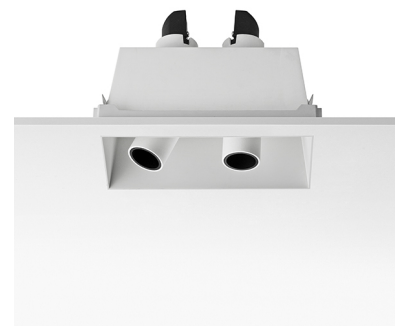
<b>Aiming</b>	Adjustable
<b>Light distribution symmetry</b>	Symmetric
<b>Beam angle</b>	14°

## ELECTRICAL

<b>Transformer availability</b>	Separate item
<b>Transformer mounting</b>	Remote
<b>Transformer type</b>	Electronic
<b>Emergency</b>	Without
<b>Insulation class</b>	Class III

## PHYSICAL

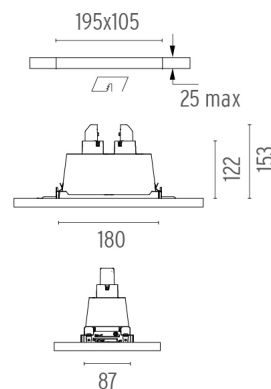
<b>Recessed depth (mm)</b>	153
<b>Construction material</b>	Aluminium
<b>Weight (kg)</b>	0,50



**Find Me I Double Point**  
designed by Jorge Herrera

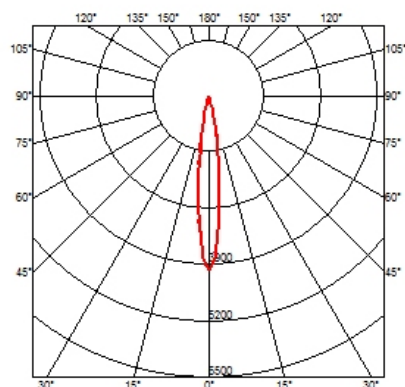
Recessed luminaire with two adjustable spots for indoor application. Remote power supply 500 mA not included.

● 09.3705.30B - 2x365lm	White
● 09.3705.14B - 2x365lm	Black



## CERTIFICATIONS

CE	03 PENDING	F	GWT 850°
70°	360°	III	IP 20



## Find Me I Double Point . Accessories

### Power Supply



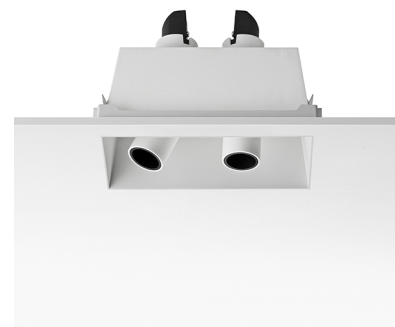
60.8880

#### Constant Current Power Supply for LED.

**6W-100/14W-240V**  
Continuous current power supply of 6W, 100V / 14W, 240V - 50/60Hz with 500 mA supply voltage.

Maximum length of 1.5 mm<sup>2</sup> secondary conductor (m): 50

Maximum length of 2.5 mm<sup>2</sup> secondary conductor (m): 50



#### Find Me I Double Point designed by Jorge Herrera

Recessed luminaire with two adjustable spots for indoor application. Remote power supply 500 mA not included.

- 09.3705.30B - 2x365lm White
- 09.3705.14B - 2x365lm Black

## Find Me I Double Point . Lamps



#### Power LED

#### Lamp category:

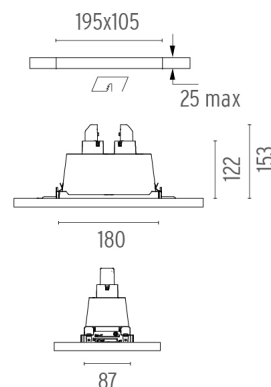
LED

#### Socket:

Special base

#### Lamp type:

Power LED



#### CERTIFICATIONS

