

FLOS

PURE | SPOT PRO CEILING

Number of heads	1
Mounting	Ceiling surface
Lamps description	Phosphor LED 19,5W 2000 lm 3000K CRI 80
Luminaire luminous flux	Extreme Cut-off. See reference number
Voltage (V)	220/240
Environment	Indoor

OPTICAL

Reflector finish	Aluminum
Aiming	Adjustable
Light distribution symmetry	Symmetric
Beam angle	34° Flood

ELECTRICAL

Transformer availability	Included
Transformer mounting	Integral
Transformer type	Electronic
Emergency	Without
Insulation class	Class I

PHYSICAL

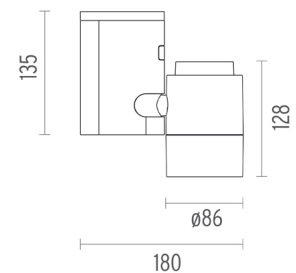
Width (mm)	180
Spot diameter (mm)	86
Construction material	Aluminium
Weight (kg)	1,40



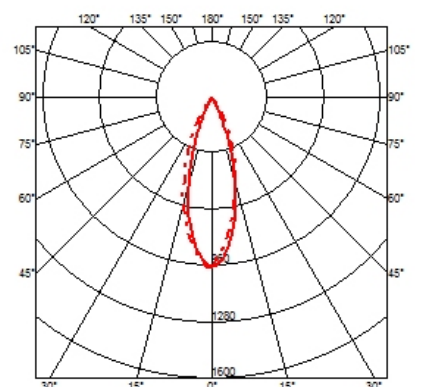
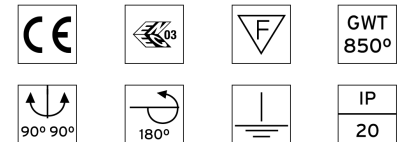
Pure I Spot Pro Ceiling
designed by Knud Holscher

Spotlight to be installed on ceiling/wall. Electronic transformer 220/240, 50/60Hz for phosphor LED integrated. LED integrated.

● 09.2482.30C - 693lm	White
● 09.2482.02C - 693lm	Grey
● 09.2482.14C - 693lm	Black



CERTIFICATIONS



Pure I Spot Pro Ceiling . Accessories

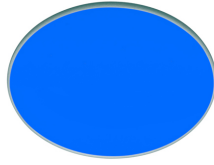
Optical



08.8163.68

Elliptical lens

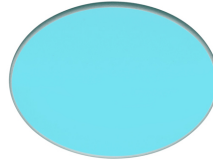
Elliptical light distribution lens in 4 mm thick tempered glass.



08.8160.64.OD

Blue filter

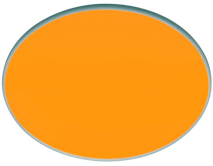
Blue filter



08.8160.65.OD

Sky blue filter

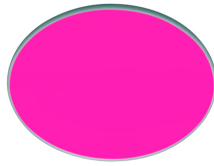
Sky blue filter



08.8160.66.OD

Amber filter

Amber filter



08.8160.67.OD

Red filter

Red filter



08.8160.98.OD

U.V. filter

U.V. filter



08.8160.68

I.R. filter

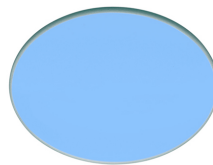
I.R. filter



08.8160.69

Hot Light

Hot Light



08.8160.CL

Cold light filter

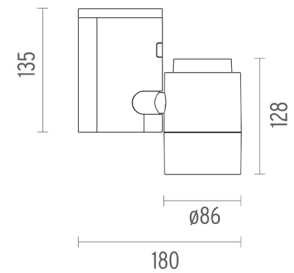
Cold light filter



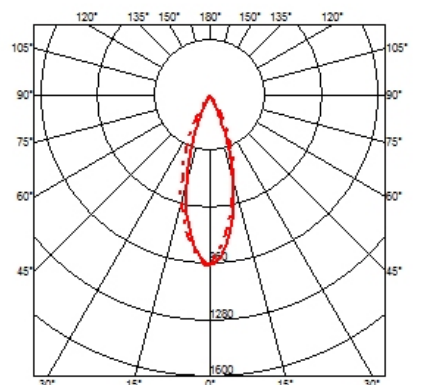
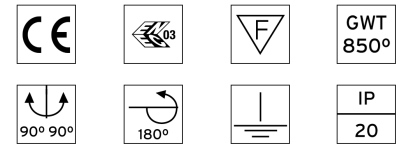
Pure I Spot Pro Ceiling designed by Knud Holscher

Spotlight to be installed on ceiling/wall. Electronic transformer 220/240, 50/60Hz for phosphor LED integrated. LED integrated.

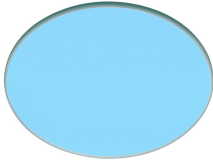
- 09.2482.30C - 693lm White
- 09.2482.02C - 693lm Grey
- 09.2482.14C - 693lm Black



CERTIFICATIONS



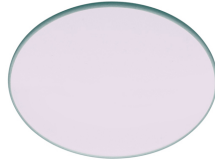
Pure I Spot Pro Ceiling . Accessories



08.8160.DL

Daylight filter

Daylight filter



08.8160.ND

Neodimium



08.8175.68

Flood lens

Flood lens made in press glass.



Pure I Spot Pro Ceiling

designed by Knud Holscher

Spotlight to be installed on ceiling/wall. Electronic transformer 220/240, 50/60Hz for phosphor LED integrated. LED integrated.

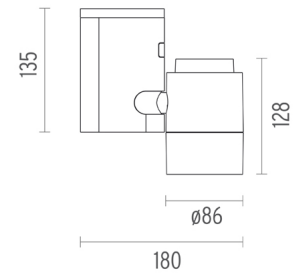
- 09.2482.30C - 693lm White
- 09.2482.02C - 693lm Grey
- 09.2482.14C - 693lm Black



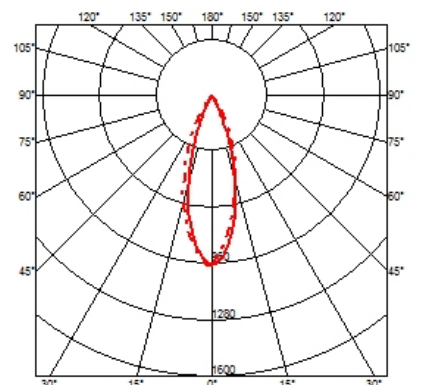
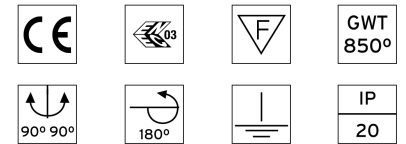
08.8186.14

Honeycomb

Anti-glare grid in aluminium cells with black liquid paint finish.



CERTIFICATIONS



Pure I Spot Pro Ceiling . Lamps



Phosphor LED

Lamp category:
LED

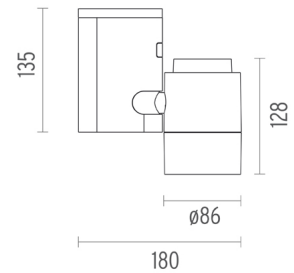
Lamp type:
Phosphor LED



Pure I Spot Pro Ceiling
designed by Knud Holscher

Spotlight to be installed on ceiling/
wall. Electronic transformer 220/240,
50/60Hz for phosphor LED
integrated. LED integrated.

- 09.2482.30C - 693lm White
- 09.2482.02C - 693lm Grey
- 09.2482.14C - 693lm Black



CERTIFICATIONS

