

FLOS

PURE | SPOT PRO CEILING

| | |
|--------------------------------|---|
| Number of heads | 1 |
| Mounting | Ceiling surface |
| Lamps description | Phosphor LED 19,5W 2000 lm 3000K CRI 80 |
| Luminaire luminous flux | Extreme Cut-off. See reference number |
| Voltage (V) | 220/240 |
| Environment | Indoor |

OPTICAL

| | |
|------------------------------------|------------|
| Reflector finish | Aluminum |
| Aiming | Adjustable |
| Light distribution symmetry | Symmetric |
| Beam angle | 20° Spot |

ELECTRICAL

| | |
|---------------------------------|------------|
| Transformer availability | Included |
| Transformer mounting | Integral |
| Transformer type | Electronic |
| Emergency | Without |
| Insulation class | Class I |

PHYSICAL

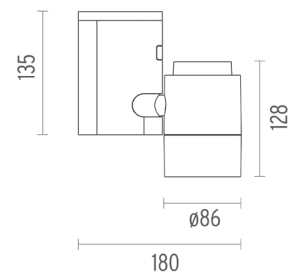
| | |
|------------------------------|-----------|
| Width (mm) | 180 |
| Spot diameter (mm) | 86 |
| Construction material | Aluminium |
| Weight (kg) | 1,40 |



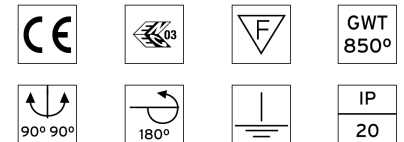
Pure I Spot Pro Ceiling designed by Knud Holscher

Spotlight to be installed on ceiling/
wall. Electronic transformer 220/240,
50/60Hz for phosphor LED
integrated. LED integrated.

| | |
|-----------------------|-------|
| ● 09.2480.30C - 704lm | White |
| ● 09.2480.02C - 704lm | Grey |
| ● 09.2480.14C - 704lm | Black |



CERTIFICATIONS



Pure I Spot Pro Ceiling . Accessories

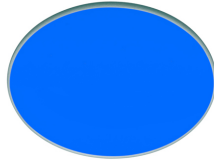
Optical



08.8163.68

Elliptical lens

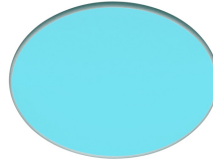
Elliptical light distribution lens in 4 mm thick tempered glass.



08.8160.64.OD

Blue filter

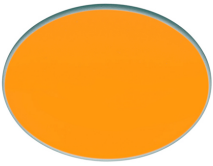
Blue filter



08.8160.65.OD

Sky blue filter

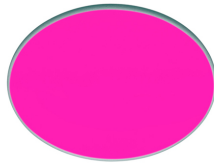
Sky blue filter



08.8160.66.OD

Amber filter

Amber filter



08.8160.67.OD

Red filter

Red filter



08.8160.98.OD

U.V. filter

U.V. filter



08.8160.68

I.R. filter

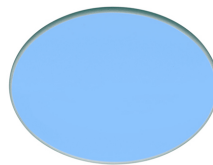
I.R. filter



08.8160.69

Hot Light

Hot Light



08.8160.CL

Cold light filter

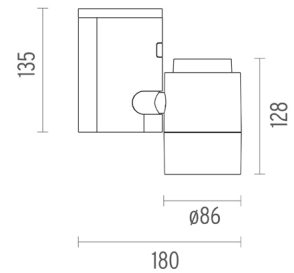
Cold light filter



Pure I Spot Pro Ceiling designed by Knud Holscher

Spotlight to be installed on ceiling/wall. Electronic transformer 220/240, 50/60Hz for phosphor LED integrated. LED integrated.

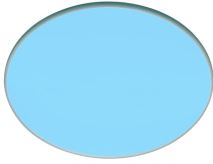
- 09.2480.30C - 704lm White
- 09.2480.02C - 704lm Grey
- 09.2480.14C - 704lm Black



CERTIFICATIONS



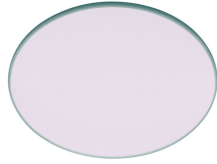
Pure I Spot Pro Ceiling . Accessories



08.8160.DL

Daylight filter

Daylight filter



08.8160.ND

Neodimium



08.8175.68

Flood lens

Flood lens made in press glass.



Pure I Spot Pro Ceiling

designed by Knud Holscher

Spotlight to be installed on ceiling/wall. Electronic transformer 220/240, 50/60Hz for phosphor LED integrated. LED integrated.

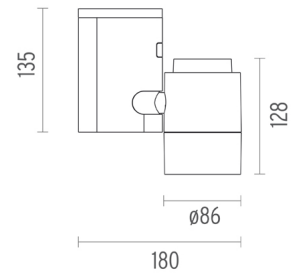
- 09.2480.30C - 704lm White
- 09.2480.02C - 704lm Grey
- 09.2480.14C - 704lm Black



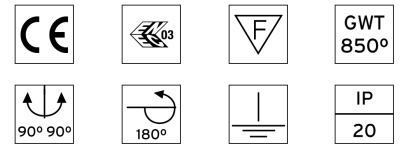
08.8186.14

Honeycomb

Anti-glare grid in aluminium cells with black liquid paint finish.



CERTIFICATIONS



Pure I Spot Pro Ceiling . Lamps



Phosphor LED

Lamp category:
LED

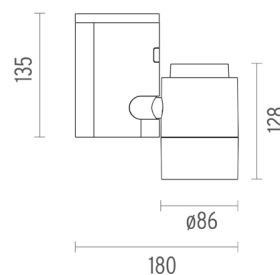
Lamp type:
Phosphor LED



Pure I Spot Pro Ceiling designed by Knud Holscher

Spotlight to be installed on ceiling/
wall. Electronic transformer 220/240,
50/60Hz for phosphor LED
integrated. LED integrated.

- 09.2480.30C - 704lm White
- 09.2480.02C - 704lm Grey
- 09.2480.14C - 704lm Black



CERTIFICATIONS

