

## PURE | SPOT PRO CEILING

<b>Number of heads</b>	1
<b>Mounting</b>	Ceiling surface
<b>Lamps description</b>	Power LED 15,7W 1400 lm 2700K CRI 80
<b>Luminaire luminous flux</b>	Extreme Cut-off. See reference number
<b>Voltage (V)</b>	220/240
<b>Environment</b>	Indoor

### OPTICAL

<b>Reflector finish</b>	Aluminum
<b>Aiming</b>	Adjustable
<b>Light distribution symmetry</b>	Symmetric
<b>Beam angle</b>	14° Spot

### ELECTRICAL

<b>Transformer availability</b>	Included
<b>Transformer mounting</b>	Integral
<b>Transformer type</b>	Electronic
<b>Emergency</b>	Without
<b>Insulation class</b>	Class I

### PHYSICAL

<b>Width (mm)</b>	180
<b>Spot diameter (mm)</b>	86
<b>Construction material</b>	Aluminium
<b>Weight (kg)</b>	1,40

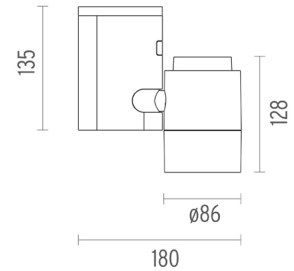


### Pure I Spot Pro Ceiling

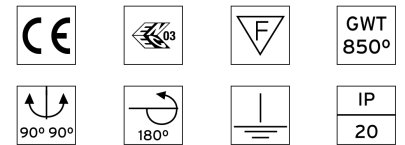
designed by Knud Holscher

Projector for mounting in ceiling/wall with LED light source. 220-240V, 50-60Hz power supply included.

● 09.2475.30A - 897lm	White
● 09.2475.02A - 897lm	Grey
● 09.2475.14A - 897lm	Black



### CERTIFICATIONS



## Pure I Spot Pro Ceiling . Accessories

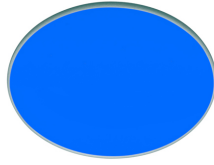
### Optical



08.8163.68

#### Elliptical lens

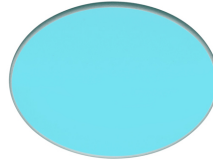
Elliptical light distribution lens in 4 mm thick tempered glass.



08.8160.64.OD

#### Blue filter

Blue filter



08.8160.65.OD

#### Sky blue filter

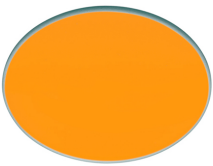
Sky blue filter



#### Pure I Spot Pro Ceiling designed by Knud Holscher

Projector for mounting in ceiling/wall with LED light source. 220-240V, 50-60Hz power supply included.

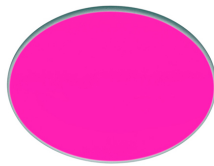
- 09.2475.30A - 897lm White
- 09.2475.02A - 897lm Grey
- 09.2475.14A - 897lm Black



08.8160.66.OD

#### Amber filter

Amber filter



08.8160.67.OD

#### Red filter

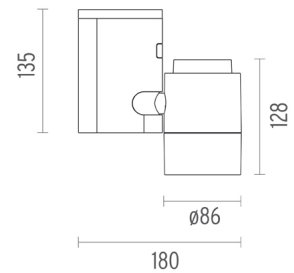
Red filter



08.8160.98.OD

#### U.V. filter

U.V. filter



08.8160.68

#### I.R. filter

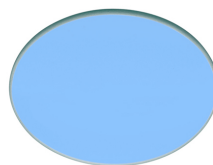
I.R. filter



08.8160.69

#### Hot Light

Hot Light

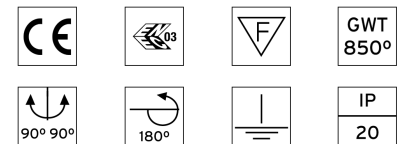


08.8160.CL

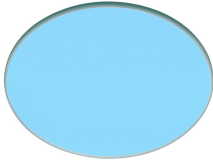
#### Cold light filter

Cold light filter

#### CERTIFICATIONS



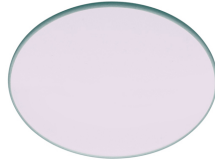
## Pure I Spot Pro Ceiling . Accessories



08.8160.DL

### Daylight filter

Daylight filter



08.8160.ND

### Neodimium



08.8175.68

### Flood lens

Flood lens made in press glass.



### Pure I Spot Pro Ceiling

designed by Knud Holscher

Projector for mounting in ceiling/wall with LED light source. 220-240V, 50-60Hz power supply included.

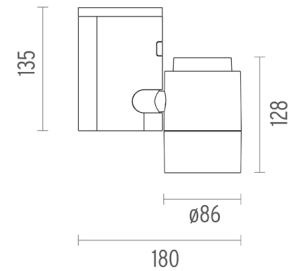
- 09.2475.30A - 897lm White
- 09.2475.02A - 897lm Grey
- 09.2475.14A - 897lm Black



08.8186.14

### Honeycomb

Anti-glare grid in aluminium cells with black liquid paint finish.



### CERTIFICATIONS



## Pure I Spot Pro Ceiling . Lamps



**Power LED**

**Lamp category:**  
LED

**Socket:**  
Special base

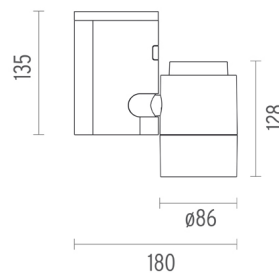
**Lamp type:**  
Power LED



**Pure I Spot Pro Ceiling**  
designed by Knud Holscher

Projector for mounting in ceiling/wall with LED light source. 220-240V, 50-60Hz power supply included.

- 09.2475.30A - 897lm White
- 09.2475.02A - 897lm Grey
- 09.2475.14A - 897lm Black



**CERTIFICATIONS**

