

FORT KNOX I CEILING

Number of heads	1
Mounting	Ceiling surface
Lamps description	LED Array 13,8W 1474 lm 3000K CRI 80 Built-in Potentiometer
Luminaire luminous flux	See reference number
Voltage (V)	220/240
Environment	Indoor



OPTICAL

Light controller description	Protection glass
Aiming	Adjustable
Light distribution symmetry	Symmetric
Beam angle	27° Medium

Fort Knox I Ceiling designed by Philippe Starck

Projector for mounting in ceiling/wall with LED light source. 220-240V, 50-60Hz power supply included.

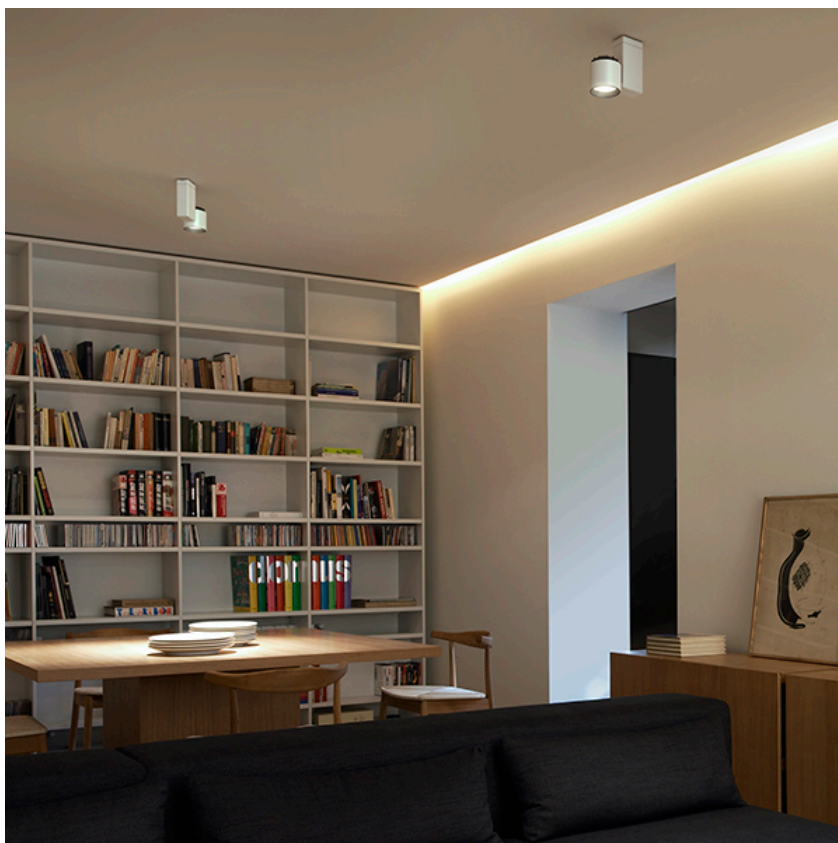
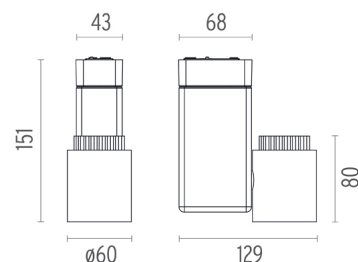
ELECTRICAL

Transformer availability	Included
Transformer mounting	Integral
Transformer type	Electronic dimmable
Emergency	Without
Insulation class	Class I

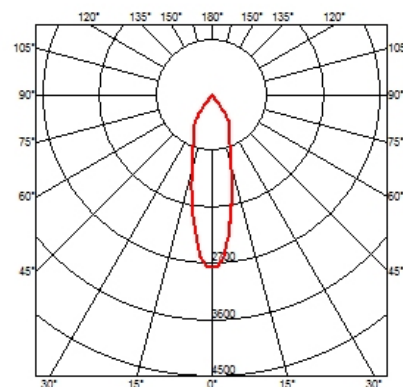
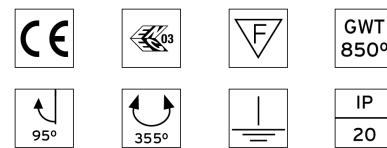
● 09.2166.30A - 1125lm	White
● 09.2166.05A - 1125lm	Polished aluminium
● 09.2166.14A - 1125lm	Black

PHYSICAL

Height (mm)	151
Spot diameter (mm)	60
Construction material	Die-cast aluminum
Weight (kg)	0,70



CERTIFICATIONS



Fort Knox I Ceiling . Accessories

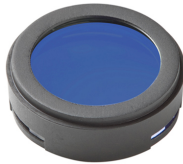
Optical



08.8502.14

Honeycomb

"Honeycomb" anti-glare screen: in thin, black-painted aluminium sheets.



08.8501.64.OD

BLUE FILTER

Colored filters in 3 mm dichroic material



08.8501.65.OD

SKY BLUE FILTER

Colored filters in 3 mm dichroic material



08.8501.66.OD

AMBER FILTER

Colored filters in 3 mm dichroic material



08.8501.67.OD

RED FILTER

Colored filters in 3 mm dichroic material



08.8501.69

HOT LIGHT

Colored filters in 3 mm dichroic material



08.8501.CL

COLD LIGHT

Colored filters in 3 mm dichroic material



08.8501.DL

DAYLIGHT

Colored filters in 3 mm dichroic material



08.8501.ND

NEODIMIUM

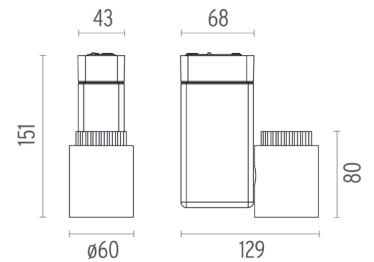
Colored filters in 3 mm dichroic material



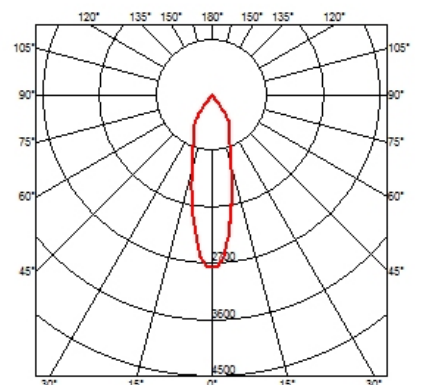
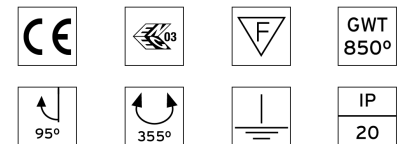
Fort Knox I Ceiling designed by Philippe Starck

Projector for mounting in ceiling/wall with LED light source. 220-240V, 50-60Hz power supply included.

- 09.2166.30A - 1125lm White
- 09.2166.05A - 1125lm Polished aluminium
- 09.2166.14A - 1125lm Black



CERTIFICATIONS



Fort Knox I Ceiling . Lamps



LED Array

Lamp category:

LED

Socket:

Special base

Lamp type:

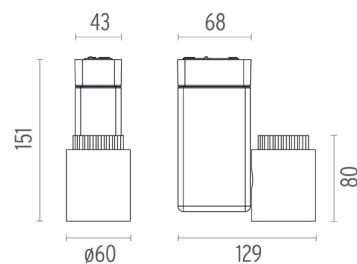
LED Array



Fort Knox I Ceiling
designed by Philippe Starck

Projector for mounting in ceiling/wall with LED light source. 220-240V, 50-60Hz power supply included.

- 09.2166.30A - 1125lm White
- 09.2166.05A - 1125lm Polished aluminium
- 09.2166.14A - 1125lm Black



CERTIFICATIONS

