

FORT KNOX I TRACK

Number of heads	1
Mounting	Track mounting
Lamps description	LED Array 13,8W 1474 lm 3000K CRI 80 Built-in Potentiometer
Luminaire luminous flux	See reference number
Voltage (V)	220/240
Environment	Indoor

OPTICAL

Light controller description	Protection glass
Aiming	Adjustable
Light distribution symmetry	Symmetric
Beam angle	27° Medium

ELECTRICAL

Transformer availability	Included
Transformer mounting	Integral
Transformer type	Electronic dimmable
Emergency	Without
Insulation class	Class I

PHYSICAL

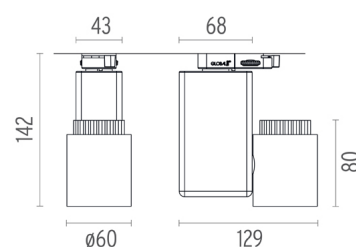
Height (mm)	142
Spot diameter (mm)	60
Construction material	Die-cast aluminum
Weight (kg)	0,60



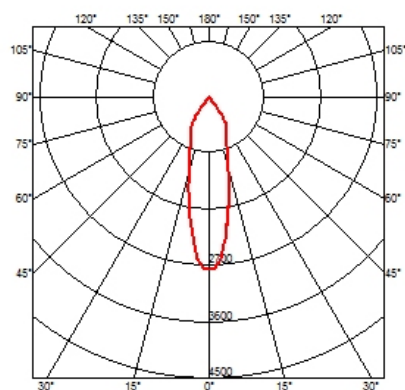
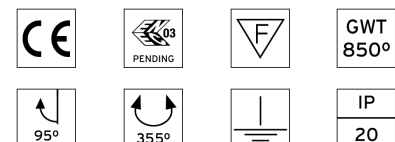
Fort Knox I Track designed by Philippe Starck

Projector for mounting on threephase rail with LED light source. 220-240V, 50-60Hz power supply included.

09.2161.30A - 1125lm	White
09.2161.05A - 1125lm	Polished aluminium
09.2161.14A - 1125lm	Black



CERTIFICATIONS



Fort Knox I Track . Accessories

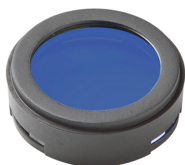
Optical



08.8502.14

Honeycomb

"Honeycomb" anti-glare screen: in thin, black-painted aluminium sheets.



08.8501.64.OD

BLUE FILTER

Colored filters in 3 mm dichroic material



08.8501.65.OD

SKY BLUE FILTER

Colored filters in 3 mm dichroic material



08.8501.66.OD

AMBER FILTER

Colored filters in 3 mm dichroic material



08.8501.67.OD

RED FILTER

Colored filters in 3 mm dichroic material



08.8501.69

HOT LIGHT

Colored filters in 3 mm dichroic material



08.8501.CL

COLD LIGHT

Colored filters in 3 mm dichroic material



08.8501.DL

DAYLIGHT

Colored filters in 3 mm dichroic material



08.8501.ND

NEODIMIUM

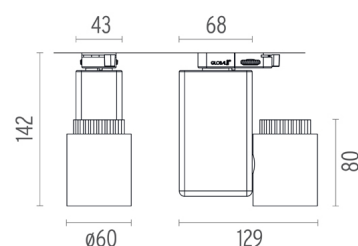
Colored filters in 3 mm dichroic material



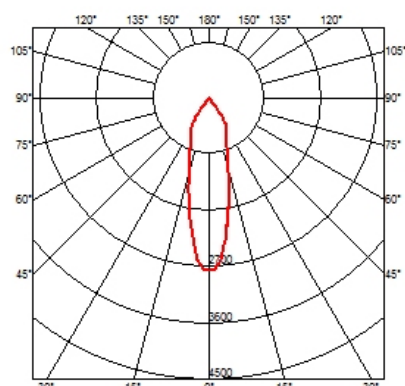
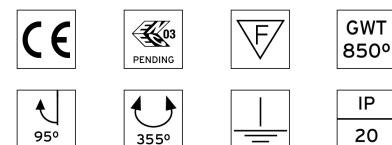
Fort Knox I Track designed by Philippe Starck

Projector for mounting on threephase rail with LED light source. 220-240V, 50-60Hz power supply included.

- 09.2161.30A - 1125lm White
- 09.2161.05A - 1125lm Polished aluminium
- 09.2161.14A - 1125lm Black



CERTIFICATIONS



Fort Knox I Track . Accessories

Mounting



60.3022.11

60.3023.11

60.3022.14

60.3023.14

Recessed box for fix-point

60.3023.29

Fix-point

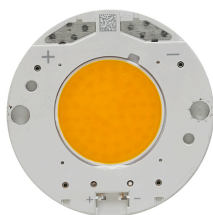


Fort Knox I Track designed by Philippe Starck

Projector for mounting on threephase rail with LED light source. 220-240V, 50-60Hz power supply included.

09.2161.30A - 1125lm	White
09.2161.05A - 1125lm	Polished aluminium
09.2161.14A - 1125lm	Black

Fort Knox I Track . Lamps

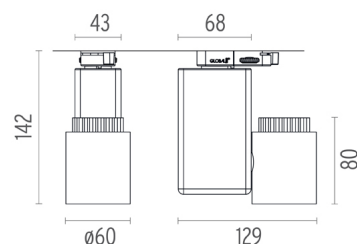


LED Array

Lamp category:
LED

Socket:
Special base

Lamp type:
LED Array



CERTIFICATIONS

