

## FORT KNOX I CEILING

Number of heads	1
Mounting	Ceiling surface
Lamps description	LED Array 9,2W 945 lm 3000K CRI 80
Luminaire luminous flux	See reference number
Voltage (V)	220/240
Environment	Indoor

### OPTICAL

Light controller description	Protection glass
Aiming	Adjustable
Light distribution symmetry	Symmetric
Beam angle	19° Spot

### ELECTRICAL

Transformer availability	Included
Transformer mounting	Integral
Transformer type	Electronic
Emergency	Without
Insulation class	Class I

### PHYSICAL

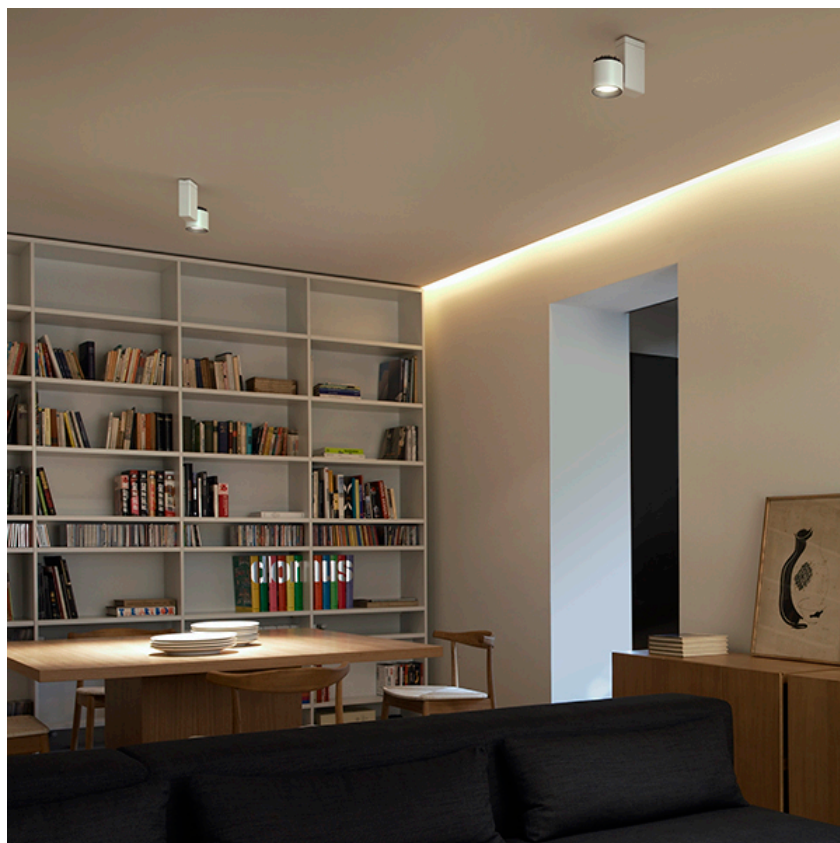
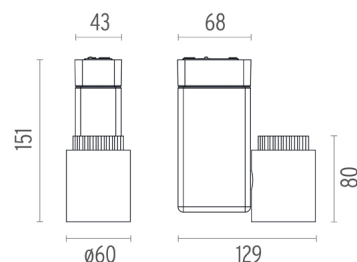
Height (mm)	151
Spot diameter (mm)	60
Construction material	Die-cast aluminum
Weight (kg)	0,70



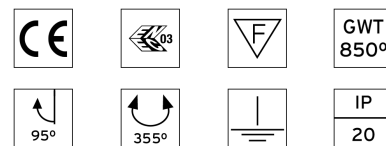
### Fort Knox I Ceiling designed by Philippe Starck

Projector for mounting in ceiling/wall with LED light source. 220-240V, 50-60Hz power supply included.

09.2155.30A - 652lm	White
09.2155.05A - 652lm	Polished aluminium
09.2155.14A - 652lm	Black



### CERTIFICATIONS



## Fort Knox I Ceiling . Accessories

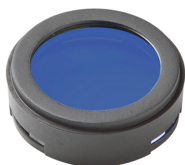
### Optical



08.8502.14

#### Honeycomb

"Honeycomb" anti-glare screen: in thin, black-painted aluminium sheets.



08.8501.64.OD

#### BLUE FILTER

Colored filters in 3 mm dichroic material



08.8501.65.OD

#### SKY BLUE FILTER

Colored filters in 3 mm dichroic material



08.8501.66.OD

#### AMBER FILTER

Colored filters in 3 mm dichroic material



08.8501.67.OD

#### RED FILTER

Colored filters in 3 mm dichroic material



08.8501.69

#### HOT LIGHT

Colored filters in 3 mm dichroic material



08.8501.CL

#### COLD LIGHT

Colored filters in 3 mm dichroic material



08.8501.DL

#### DAYLIGHT

Colored filters in 3 mm dichroic material



08.8501.ND

#### NEODIMIUM

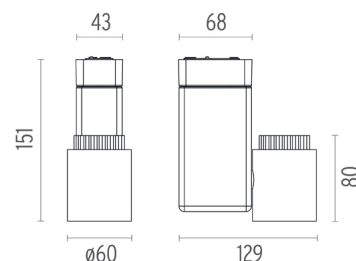
Colored filters in 3 mm dichroic material



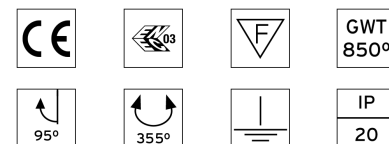
### Fort Knox I Ceiling designed by Philippe Starck

Projector for mounting in ceiling/wall with LED light source. 220-240V, 50-60Hz power supply included.

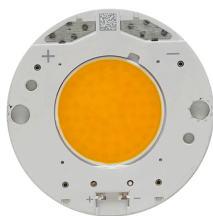
09.2155.30A - 652lm	White
09.2155.05A - 652lm	Polished aluminium
09.2155.14A - 652lm	Black



### CERTIFICATIONS



## Fort Knox I Ceiling . Lamps



### LED Array

### Lamp category:

LED

### Socket:

Special base

### Lamp type:




LED Array

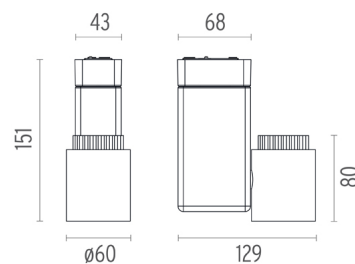


### Fort Knox I Ceiling

designed by Philippe Starck

Projector for mounting in ceiling/wall with LED light source. 220-240V, 50-60Hz power supply included.

	09.2155.30A - 652lm	White
	09.2155.05A - 652lm	Polished aluminium
	09.2155.14A - 652lm	Black



### CERTIFICATIONS

