

SPOT MODULE LED ARRAY

Number of heads	1
Mounting	Track mounting
Lamps description	LED Array DC 450 mA 14,4W 1440 lm 3000K CRI 90
Luminaire luminous flux	See reference number
Environment	Indoor

OPTICAL

Aiming	Adjustable
Light distribution symmetry	Symmetric
Beam angle	28° Medium

ELECTRICAL

Transformer availability	Separate item
Transformer mounting	Remote
Transformer type	Electronic
Emergency	Without
Insulation class	Class III

PHYSICAL

Spot diameter (mm)	57
Construction material	Aluminium
Weight (kg)	0,30

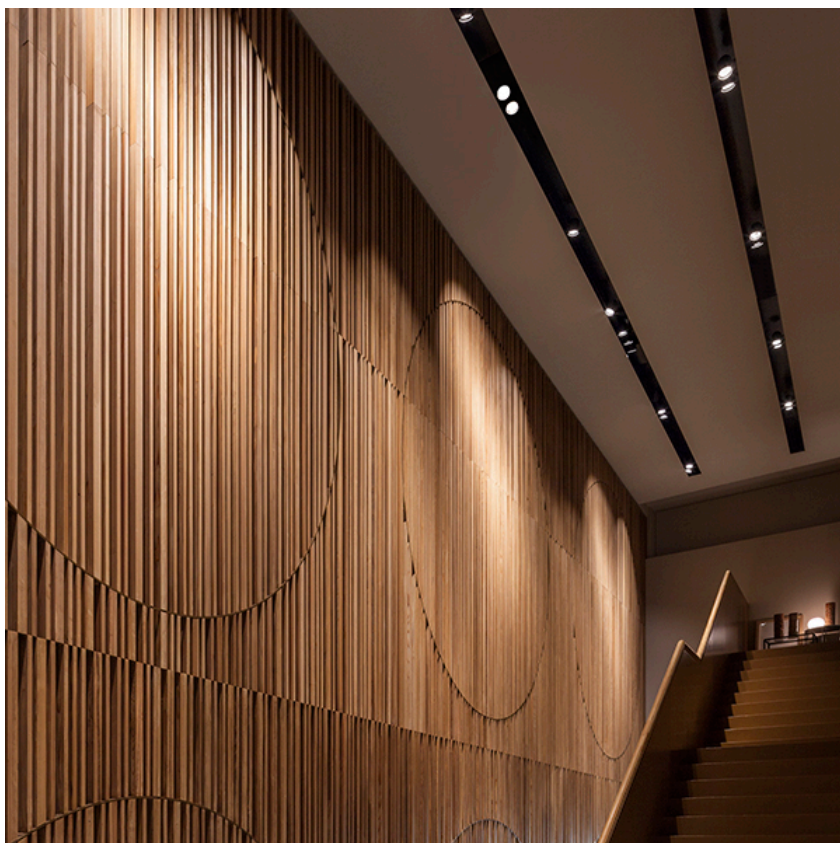
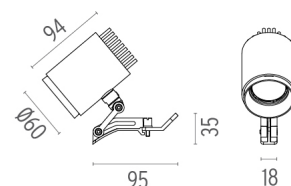


Spot Module LED Array

designed by FLOS Architectural

Projector to be installed in Light Cut Mini system. Remote continuous current supply source not included.

09.0217.30A - 1006lm	White
09.0217.14A - 1006lm	Black



CERTIFICATIONS



Spot Module LED Array . Accessories

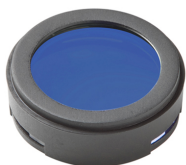
Optical



08.8502.14

Honeycomb

"Honeycomb" anti-glare screen: in thin, black-painted aluminium sheets.



08.8501.64.OD

BLUE FILTER

Colored filters in 3 mm dichroic material



08.8501.65.OD

SKY BLUE FILTER

Colored filters in 3 mm dichroic material



08.8501.66.OD

AMBER FILTER

Colored filters in 3 mm dichroic material



08.8501.67.OD

RED FILTER

Colored filters in 3 mm dichroic material



08.8501.69

HOT LIGHT

Colored filters in 3 mm dichroic material



08.8501.CL

COLD LIGHT

Colored filters in 3 mm dichroic material



08.8501.DL

DAYLIGHT

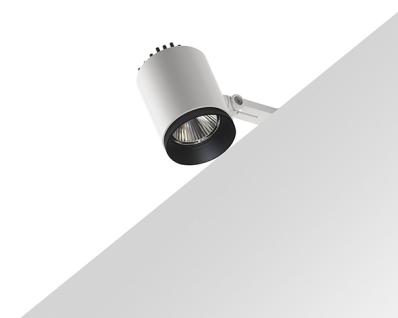
Colored filters in 3 mm dichroic material



08.8501.ND

NEODIMIUM

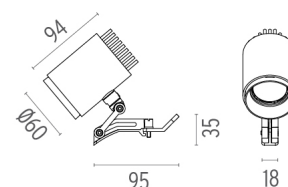
Colored filters in 3 mm dichroic material



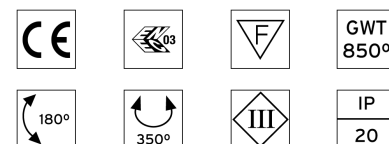
Spot Module LED Array designed by FLOS Architectural

Projector to be installed in Light Cut Mini system. Remote continuous current supply source not included.

- 09.0217.30A - 1006lm White
- 09.0217.14A - 1006lm Black



CERTIFICATIONS



Spot Module LED Array . Accessories

Power Supply



60.8697

Constant Current Power Supply for LED. 11/32W

Remote multicurrent electronic driver for LED. 11/32W, 250-1000 mA, 220/240V, 50/60Hz.

Maximum length of 1.5 mm² secondary conductor (m): 20

Maximum length of 2.5 mm² secondary conductor (m): 50



60.8536

Constant Current Power Supply for LED. 13-20W

Continuous current power supply of 13-20W, 110/240V - 50/60Hz with power current selected through adjustable 250/350/400/450/500/550/600/700mA 1-10V switch or push dimming. (Johnny 120 with accessories max 450 mA)

Maximum length of 1.5 mm² secondary conductor (m): 10

Maximum length of 2.5 mm² secondary conductor (m): 15



60.8837

Constant Current Power Supply for LED. 30-50W

Continuous current power supply of 30-50W, 110/240V - 50/60Hz with power current selected through adjustable 250/300/350/400/450/500/550/600/650/700 mA Dali switch, 1-10V switch or push dimming.

Maximum length of 1.5 mm² secondary conductor (m): 10

Maximum length of 2.5 mm² secondary conductor (m): 15



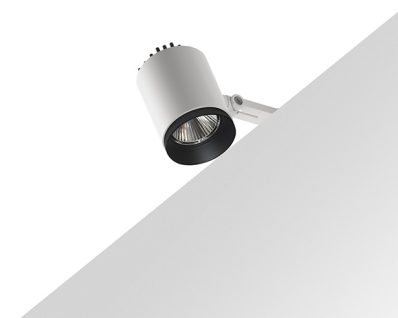
60.8847

Constant Current Power Supply for LED. 10-20W

Continuous current power supply of 10-20W, 110/240V - 50/60Hz with power current selected through adjustable 250/350/400/450/500/ 550/600/700 mA Dali switch. (Johnny 120 with accessories max 450 mA)

Maximum length of 1.5 mm² secondary conductor (m): 10

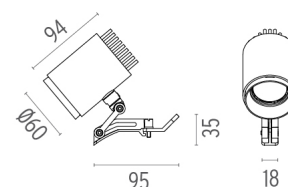
Maximum length of 2.5 mm² secondary conductor (m): 15



Spot Module LED Array designed by FLOS Architectural

Projector to be installed in Light Cut Mini system. Remote continuous current supply source not included.

- 09.0217.30A - 1006lm White
- 09.0217.14A - 1006lm Black



CERTIFICATIONS



Spot Module LED Array . Lamps



LED Array

Lamp category:
LED

Socket:
Special base

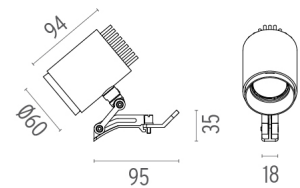
Lamp type:
LED Array



Spot Module LED Array designed by FLOS Architectural

Projector to be installed in Light Cut Mini system. Remote continuous current supply source not included.

●	09.0217.30A - 1006lm	White
●	09.0217.14A - 1006lm	Black



CERTIFICATIONS

