

THIN LED 404 MM

Number of heads	1
Mounting	Wall surface
Lamps description	Top LED 6,4W 688 lm 3000K CRI 85
Luminaire luminous flux	See reference number
Voltage (V)	24
Environment	Indoor
Notes	16 LEDs



OPTICAL

Aiming	Fixed
Beam angle	43°

Thin LED 404 mm

designed by FLOS Architectural

Wall application luminaire for indirect lighting with LED. Remote transformer not included.

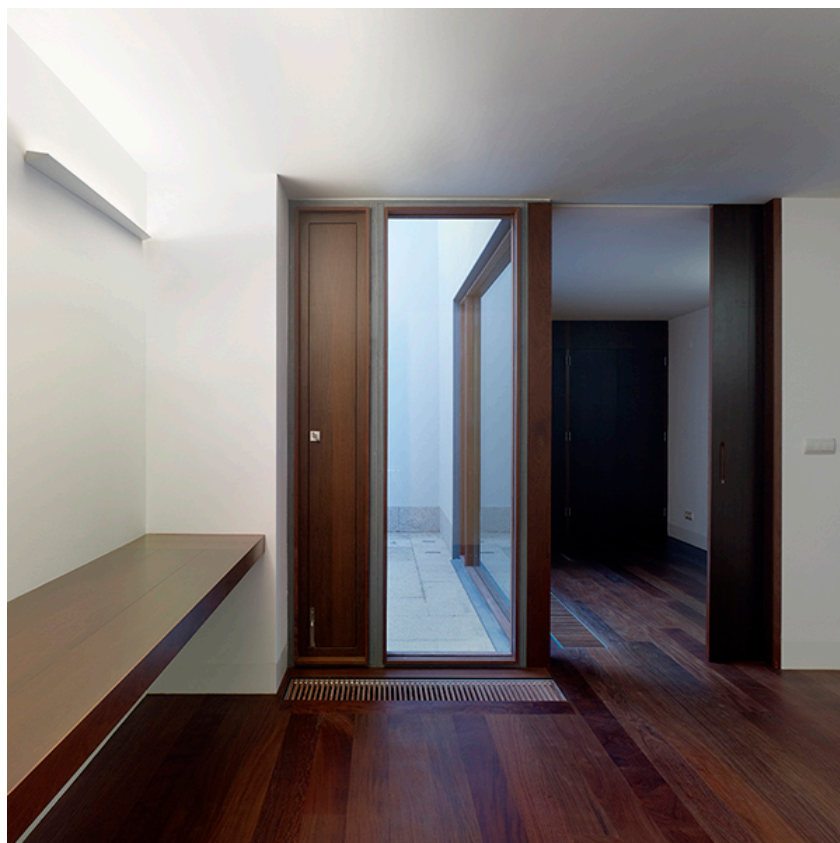
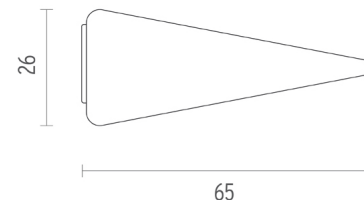
ELECTRICAL

Transformer availability	Separate item
Transformer mounting	Remote
Transformer type	Electronic
Emergency	Without
Insulation class	Class III

09.0045.30A - 574lm	White
09.0045.29A - 574lm	Anodised aluminium
09.0045.BZA - 574lm	Bronze

PHYSICAL

Length (mm)	404
Construction material	Aluminium
Weight (kg)	0,90/m



CERTIFICATIONS



Thin LED 404 mm . Accessories

Power Supply



60.8495

Electronic transformer with constant voltage (24V) for LED. 20W
Electronic transformer with constant voltage (24V) for LED. 100/240V.

Maximum lenght of 1.5 mm2
secondary conductor (m): 5



60.8496

Electronic transformer with constant voltage (24V) for LED. 60W
Electronic transformer with constant voltage (24V) for LED. 100/240V.

Maximum lenght of 1.5 mm2
secondary conductor (m): 5



60.8497

Electronic transformer with constant voltage (24V) for LED. 100W
Electronic transformer with constant voltage (24V) for LED. 100/240V.

Maximum lenght of 1.5 mm2
secondary conductor (m): 5

Maximum lenght of 2.5 mm2
secondary conductor (m): 10



Thin LED 404 mm
designed by FLOS Architectural

Wall application luminaire for indirect lighting with LED. Remote transformer not included.

09.0045.30A - 574lm	White
09.0045.29A - 574lm	Anodised aluminium
09.0045.BZA - 574lm	Bronze

Electrical



60.8640

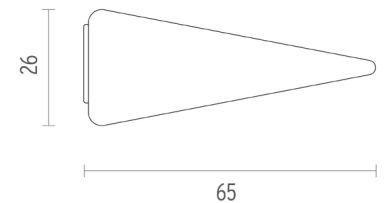
Dimmable I-10V Control Unit

Dimmable I-10V control unit with 1 channel for 24V LED modules. Power supply not included. Max. 120 W - 5A.



60.8635

Dimmable Dali control unit with 1 channel for 24V LED modules
Power supply not included.



CERTIFICATIONS



Thin LED 404 mm . Lamps



Top LED

Lamp category:

LED

Socket:

Special base

Lamp type:




Top LED

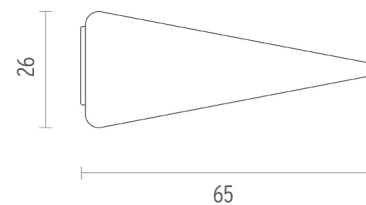


Thin LED 404 mm

designed by FLOS Architectural

Wall application luminaire for indirect lighting with LED. Remote transformer not included.

	09.0045.30A - 574lm	White
	09.0045.29A - 574lm	Anodised aluminium
	09.0045.BZA - 574lm	Bronze



CERTIFICATIONS

