

NEUTRON I FIXED SQUARE CEILING

Number of heads	1
Mounting	Ceiling recessed
Lamps description	Power LED 7W 720 lm 3000K CRI 80
Luminaire luminous flux	See reference number
Voltage (V)	220/240
Environment	Indoor, Outdoor

OPTICAL

Aiming	Fixed
Light distribution symmetry	Symmetric
Beam angle	21° Medium

ELECTRICAL

Transformer availability	Included
Transformer mounting	Integral
Transformer type	Electronic
Emergency	Without
Insulation class	Class I

PHYSICAL

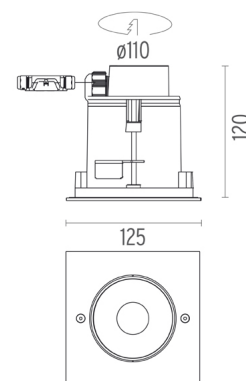
Cutout diameter (mm)	110
Length (mm)	125
Width (mm)	125
Recessed depth (mm)	120
Construction material	Stainless steel
Weight (kg)	1,10



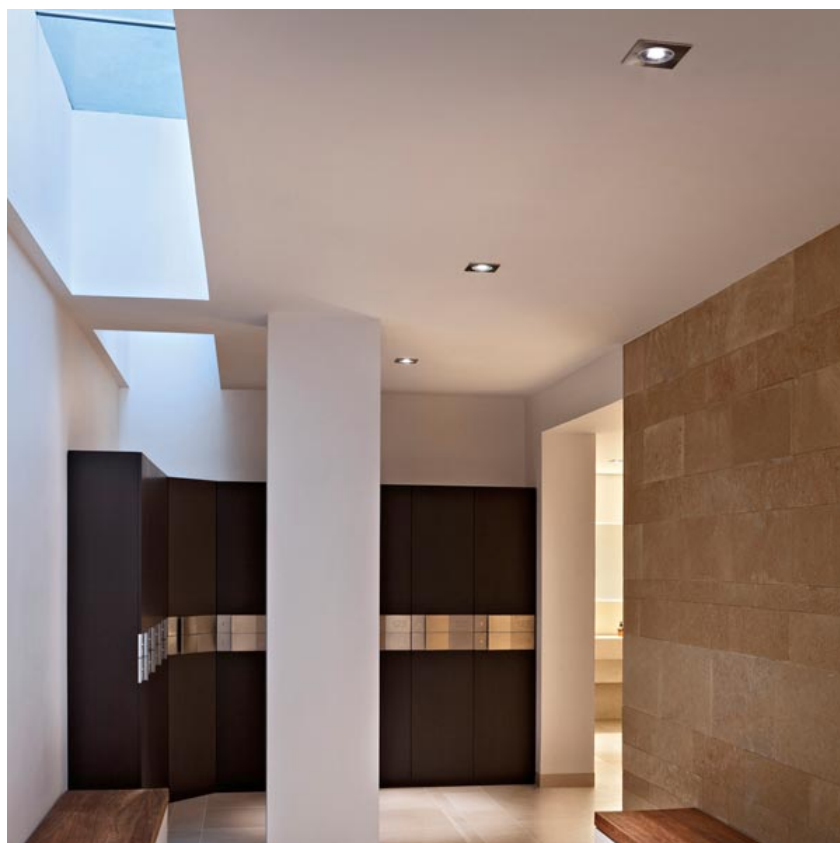
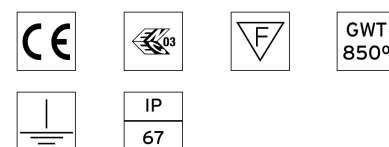
Neutron I Fixed Square Ceiling
designed by Piero Lissoni

LED downlight. Cluster 7 LED module integrated. Electronic driver 220/240 V integrated. Watertight connection device included.

07.9518.04B - 269lm	Black
07.9518.72B - 269lm	Grey
07.9518.55B - 269lm	Stainless steel
07.9518.PNB - 269lm	Stainless steel black
07.9518.PBB - 269lm	Stainless steel bruno
07.9518.PGB - 269lm	Stainless steel gold



CERTIFICATIONS



Neutron I Fixed Square Ceiling . Accessories

Electrical



● 08.8012.00

Junction box

IP67 waterproof junction box: to be used for electrical connections.



Neutron I Fixed Square Ceiling designed by Piero Lissoni

LED downlight. Cluster 7 LED module integrated. Electronic driver 220/240 V integrated. Watertight connection device included.

● 07.9518.04B - 269lm	Black
● 07.9518.72B - 269lm	Grey
● 07.9518.55B - 269lm	Stainless steel
● 07.9518.PNB - 269lm	Stainless steel black
● 07.9518.PBB - 269lm	Stainless steel bruno
● 07.9518.PGB - 269lm	Stainless steel gold

Neutron I Fixed Square Ceiling . Lamps



Power LED

Lamp category:

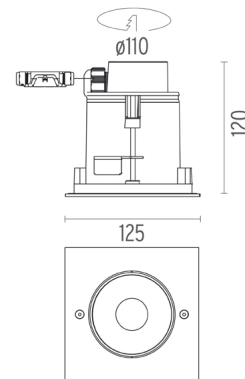
LED

Socket:

Special base

Lamp type:

Power LED



CERTIFICATIONS

