

NEUTRON I FIXED SQUARE CEILING

Number of heads	1
Mounting	Ceiling recessed
Lamps description	Phosphor LED 8,2W 965 lm 3000K CRI 80
Luminaire luminous flux	See reference number
Voltage (V)	220/240
Environment	Indoor, Outdoor

OPTICAL

Aiming	Fixed
Light distribution symmetry	Symmetric
Beam angle	39°

ELECTRICAL

Transformer availability	Included
Transformer mounting	Integral
Transformer type	Electronic
Emergency	Without
Insulation class	Class II

PHYSICAL

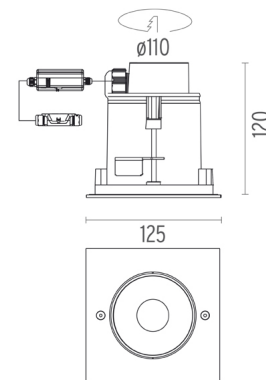
Cutout diameter (mm)	110
Length (mm)	125
Width (mm)	125
Recessed depth (mm)	120
Construction material	Stainless steel
Weight (kg)	1,20



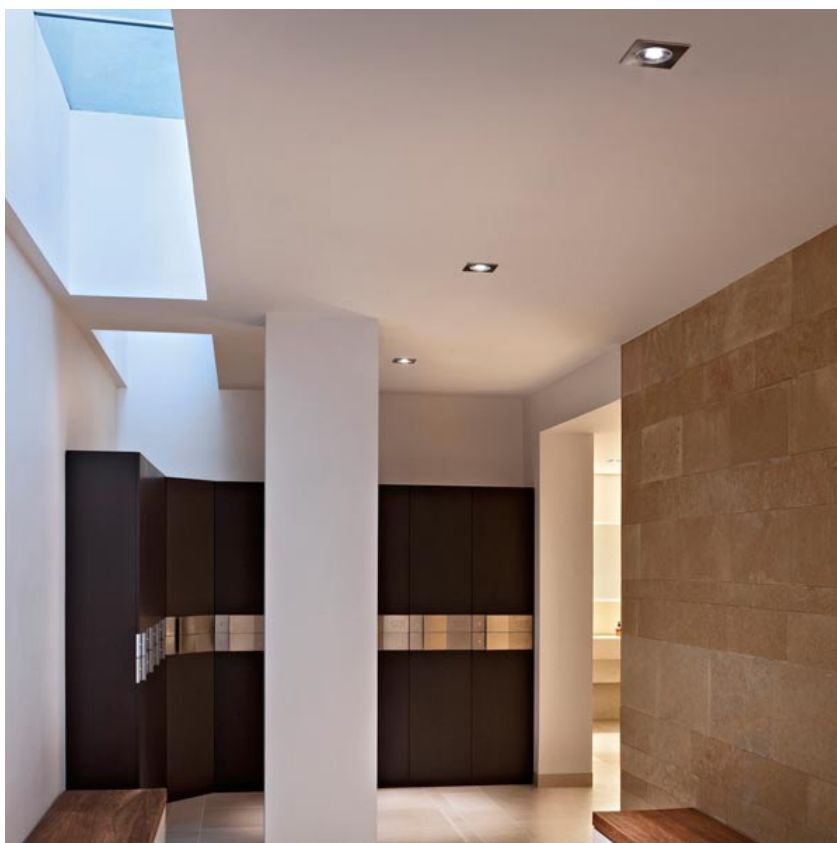
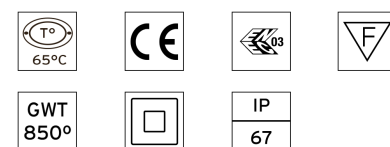
Neutron I Fixed Square Ceiling
designed by Piero Lissoni

LED downlight. Phosphor LED module integrated. Remote electronic driver 220/240V included. Watertight connection device included.

● 07.9503.04B - 639lm	Black
● 07.9503.72B - 639lm	Grey
● 07.9503.55B - 639lm	Stainless steel
● 07.9503.PNB - 639lm	Stainless steel black
● 07.9503.PBB - 639lm	Stainless steel bruno
● 07.9503.PGB - 639lm	Stainless steel gold



CERTIFICATIONS



Neutron I Fixed Square Ceiling . Accessories

Electrical



● 08.8012.00

Junction box

IP67 waterproof junction box: to be used for electrical connections.



Neutron I Fixed Square Ceiling designed by Piero Lissoni

LED downlight. Phosphor LED module integrated. Remote electronic driver 220/240V included. Watertight connection device included.

- 07.9503.04B - 639lm Black
- 07.9503.72B - 639lm Grey
- 07.9503.55B - 639lm Stainless steel
- 07.9503.PNB - 639lm Stainless steel black
- 07.9503.PBB - 639lm Stainless steel bruno
- 07.9503.PGB - 639lm Stainless steel gold

Neutron I Fixed Square Ceiling . Lamps



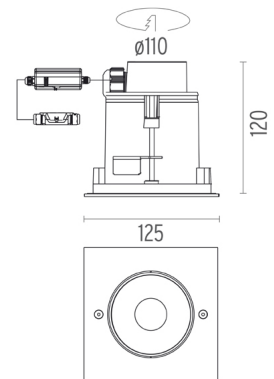
Phosphor LED

Lamp category:

LED

Lamp type:

Phosphor LED



CERTIFICATIONS

