

FLOS

SPOT 120 DALI VERSION

Number of heads	1
Mounting	Track mounting
Lamps description	LED Array 12,5W 1138 lm 3000K CRI 90
Luminaire luminous flux	See reference number
Voltage (V)	48
Environment	Indoor
Notes	Accessories included (honeycomb and screening crosspiece). Only compatible with DALI, 1-10V, FLOS SMART CONTROL profile version.



OPTICAL

Aiming	Adjustable
Light distribution symmetry	Symmetric
Beam angle	40° Flood




Spot 120 Dali Version

designed by FLOS Architectural

<div>Accent lighting LED module to be installed in The Tracking Magnet/ Infra-Structure System.</div>

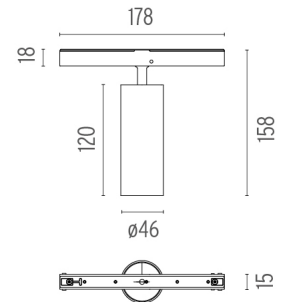
ELECTRICAL

Transformer availability	Separate item
Transformer mounting	Remote
Transformer type	Electronic dimmable dali
Emergency	Without
Insulation class	Class III

	03.8157.40.DA - 629lm	White
	03.8157.05.DA - 629lm	Chrome
	03.8157.14.DA - 629lm	Black

PHYSICAL

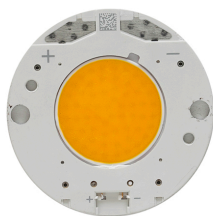
Spot diameter (mm)	46
Construction material	Aluminium
Weight (kg)	0,30



CERTIFICATIONS



Spot 120 Dali Version . Lamps



LED Array

Lamp category:

LED

Socket:

Special base

Lamp type:

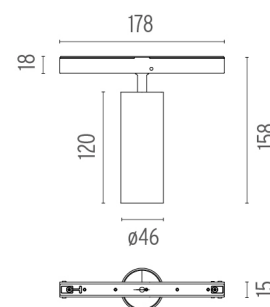
LED Array



Spot 120 Dali Version
designed by FLOS Architectural

<div>Accent lighting LED module to be installed in The Tracking Magnet/ Infra-Structure System.</div>

- 03.8157.40.DA - 629lm White
- 03.8157.05.DA - 629lm Chrome
- 03.8157.14.DA - 629lm Black



CERTIFICATIONS

