

SPOT 120 ON BOARD DIMMER

Number of heads	1
Mounting	Track mounting
Lamps description	LED Array 12,5W 1075 lm 2700K CRI 90
Luminaire luminous flux	See reference number
Voltage (V)	48
Environment	Indoor
Notes	Accessories included (honeycomb and screening crosspiece).



OPTICAL




Aiming	Adjustable
Light distribution symmetry	Symmetric
Beam angle	40° Flood

Spot 120 On Board Dimmer designed by FLOS Architectural

<div>Accent lighting LED module to be installed in The Tracking Magnet/ Infra-Structure System.</div>

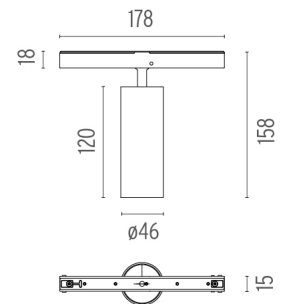
ELECTRICAL

Transformer availability	Separate item
Transformer mounting	Remote
Transformer type	Electronic dimmable
Emergency	Without
Insulation class	Class III

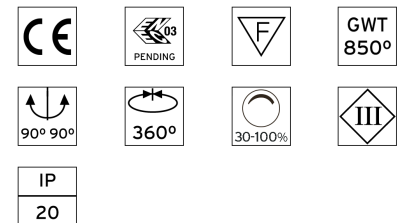
	03.8156.40 - 599lm	White
	03.8156.05 - 599lm	Chrome
	03.8156.14 - 599lm	Black

PHYSICAL

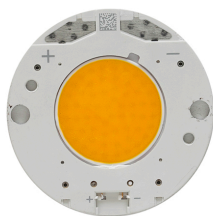
Spot diameter (mm)	46
Construction material	Aluminium
Weight (kg)	0,30



CERTIFICATIONS



Spot 120 On Board Dimmer . Lamps



LED Array

Lamp category:

LED

Socket:

Special base

Lamp type:

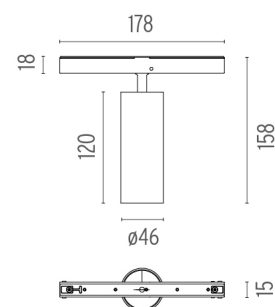
LED Array



Spot 120 On Board Dimmer
designed by FLOS Architectural

<div>Accent lighting LED module to be installed in The Tracking Magnet/ Infra-Structure System.</div>

- 03.8156.40 - 599lm White
- 03.8156.05 - 599lm Chrome
- 03.8156.14 - 599lm Black



CERTIFICATIONS

