

# FLOS

## SPOT 120 DALI VERSION

<b>Number of heads</b>	1
<b>Mounting</b>	Track mounting
<b>Lamps description</b>	LED Array 12,5W 1075 lm 2700K CRI 90
<b>Luminaire luminous flux</b>	See reference number
<b>Voltage (V)</b>	48
<b>Environment</b>	Indoor
<b>Notes</b>	Accessories included (honeycomb and screening crosspiece). Only compatible with DALI, 1-10V, FLOS SMART CONTROL profile version.



### OPTICAL

<b>Aiming</b>	Adjustable
<b>Light distribution symmetry</b>	Symmetric
<b>Beam angle</b>	17° Medium

### Spot 120 Dali Version

designed by FLOS Architectural

<div>Accent lighting LED module to be installed in The Tracking Magnet/ Infra-Structure System.</div>

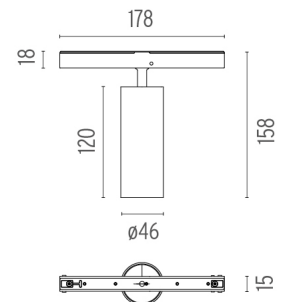
### ELECTRICAL

<b>Transformer availability</b>	Separate item
<b>Transformer mounting</b>	Remote
<b>Transformer type</b>	Electronic dimmable dali
<b>Emergency</b>	Without
<b>Insulation class</b>	Class III

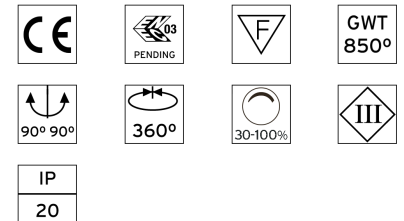
- 03.8154.40.DA - 654lm White
- 03.8154.05.DA - 654lm Chrome
- 03.8154.14.DA - 654lm Black

### PHYSICAL

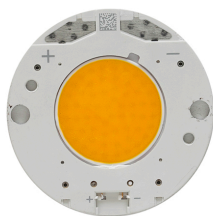
<b>Spot diameter (mm)</b>	46
<b>Construction material</b>	Aluminium
<b>Weight (kg)</b>	0,30



### CERTIFICATIONS



## Spot 120 Dali Version . Lamps



**LED Array**

**Lamp category:**

LED

**Socket:**

Special base

**Lamp type:**

LED Array

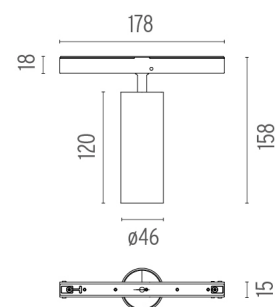


**Spot 120 Dali Version**

designed by FLOS Architectural

<div>Accent lighting LED module to be installed in The Tracking Magnet/ Infra-Structure System.</div>

- 03.8154.40.DA - 654lm White
- 03.8154.05.DA - 654lm Chrome
- 03.8154.14.DA - 654lm Black



**CERTIFICATIONS**

