

## SUSPENSION GLASS DOWNLIGHT I 10 WHITE ROD 100 MM ON BOARD DIMMER

<b>Number of heads</b>	1
<b>Mounting</b>	Track mounting
<b>Lamps description</b>	LED Array 13,5W 1371 lm 3000K CRI 90
<b>Luminaire luminous flux</b>	Extreme Cut-off. See reference number
<b>Voltage (V)</b>	48
<b>Environment</b>	Indoor

### OPTICAL

<b>Aiming</b>	Fixed
<b>Light distribution symmetry</b>	Symmetric

### ELECTRICAL

<b>Transformer availability</b>	Separate item
<b>Transformer mounting</b>	Remote
<b>Transformer type</b>	Electronic dimmable
<b>Emergency</b>	Without
<b>Insulation class</b>	Class III

### PHYSICAL

<b>Weight (kg)</b>	1
--------------------	---

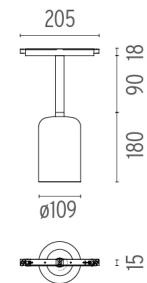


**Suspension Glass Downlight I 10 White Rod 100 mm On Board Dimmer**

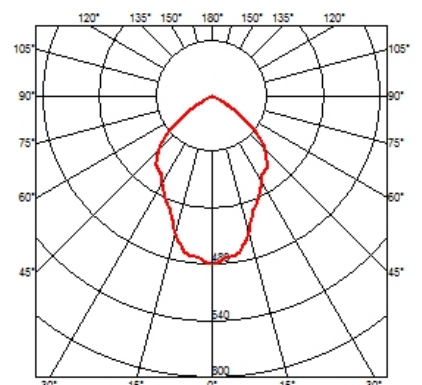
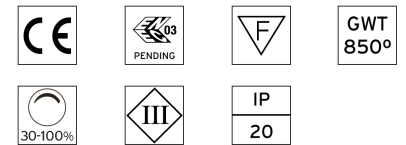
designed by Vincent Van Duysen

<div>Suspended luminaire with rigid rod and blown glass in several finishes to be installed in the Infra-Structure system.</div>

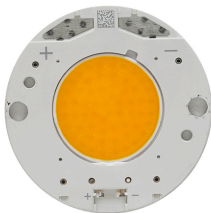
- 03.8137.00 - 82° - 746lm Transparent Glass
- 03.8137.FU - 47° - 510lm Smoked Glass
- 03.8137.RC - 42° - 309lm Red Glass



### CERTIFICATIONS



## Suspension Glass Downlight I 10 White Rod 100 mm On Board Dimmer . Lamps



**LED Array**

**Lamp category:**

LED

**Socket:**

Special base

**Lamp type:**

LED Array

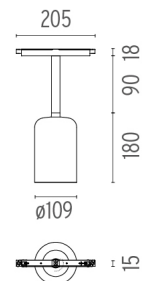


**Suspension Glass Downlight I 10 White Rod 100 mm On Board Dimmer**

designed by Vincent Van Duysen

<div>Suspended luminaire with rigid rod and blown glass in several finishes to be installed in the Infra-Structure system.</div>

- 03.8137.00 - 82° - 746lm Transparent Glass
- 03.8137.FU - 47° - 510lm Smoked Glass
- 03.8137.RC - 42° - 309lm Red Glass



### CERTIFICATIONS

