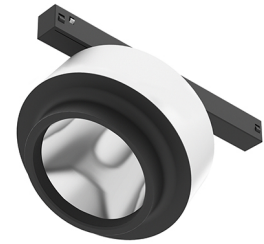


FLOS

ANTHONY SPOT TRACK DIMMABLE I-10V

Number of heads	1
Mounting	Track mounting
Lamps description	Power LED 16W 1404 lm 3000K CRI 90
Voltage (V)	48
Environment	Indoor
Notes	Only compatible with DALI, I-10V, FLOS SMART CONTROL profile version.



OPTICAL

Reflector finish	Aluminum
Aiming	Adjustable
Light distribution symmetry	Symmetric
Beam angle	15° Spot

Anthony Spot Track Dimmable I-10V
designed by FLOS Architectural

Accent lighting LED module to be installed in The Tracking Magnet System.

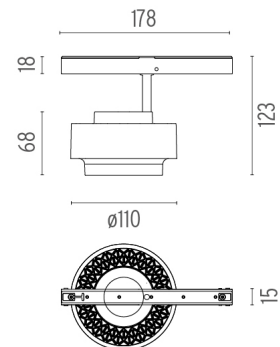
ELECTRICAL

Transformer availability	Separate item
Transformer mounting	Remote
Transformer type	Electronic dimmable I-10V
Emergency	Without
Insulation class	Class III

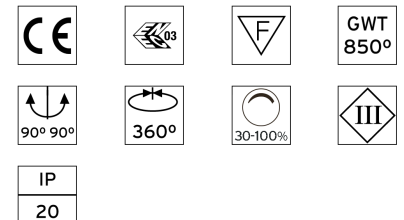
- 03.8022.40.IV - 1085lm White
- 03.8022.05.IV - 1085lm Chrome
- 03.8022.14.IV - 1085lm Black

PHYSICAL

Spot diameter (mm)	110
Construction material	Aluminium
Weight (kg)	0,36



CERTIFICATIONS



Anthony Spot Track Dimmable I-10V . Accessories

Optical



○ 08.0050.00

Flood lens



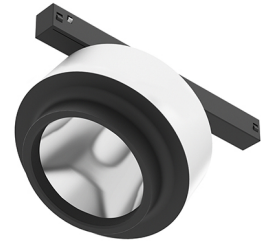
08.8418.68A

Elliptical lens



● 08.8419.14A

Honeycomb



Anthony Spot Track Dimmable I-10V
designed by FLOS Architectural

Accent lighting LED module to be installed in The Tracking Magnet System.

- 03.8022.40.1V - 1085lm White
- 03.8022.05.1V - 1085lm Chrome
- 03.8022.14.1V - 1085lm Black

Anthony Spot Track Dimmable I-10V . Lamps

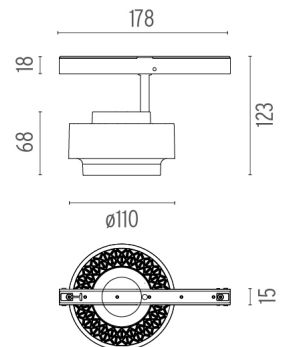


Power LED

Lamp category:
LED

Socket:
Special base

Lamp type:
Power LED



CERTIFICATIONS

