

## ANTHONY SPOT TRACK ON BOARD DIMMER

<b>Number of heads</b>	1
<b>Mounting</b>	Track mounting
<b>Lamps description</b>	Power LED 16W 1310 lm 2700K CRI 90
<b>Voltage (V)</b>	48
<b>Environment</b>	Indoor

### OPTICAL

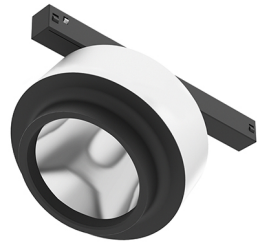
<b>Reflector finish</b>	Aluminum
<b>Aiming</b>	Adjustable
<b>Light distribution symmetry</b>	Symmetric
<b>Beam angle</b>	22° Medium

### ELECTRICAL

<b>Transformer availability</b>	Separate item
<b>Transformer mounting</b>	Remote
<b>Transformer type</b>	Electronic dimmable
<b>Emergency</b>	Without
<b>Insulation class</b>	Class III




### PHYSICAL

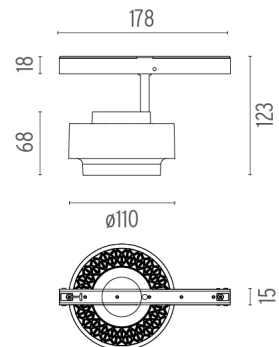
<b>Spot diameter (mm)</b>	110
<b>Construction material</b>	Aluminium
<b>Weight (kg)</b>	0,36



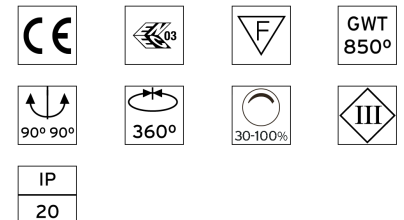
**Anthony Spot Track On Board Dimmer**  
designed by FLOS Architectural

Accent lighting LED module to be installed in The Tracking Magnet System.

	03.8021.40 - 1052lm	White
	03.8021.05 - 1052lm	Chrome
	03.8021.14 - 1052lm	Black



### CERTIFICATIONS



## Anthony Spot Track On Board Dimmer . Accessories

### Optical



○ 08.0050.00

**Flood lens**



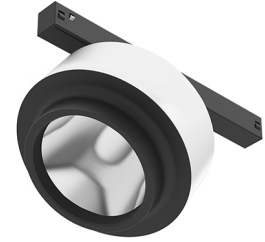
08.8418.68A

**Elliptical lens**



● 08.8419.14A

**Honeycomb**



**Anthony Spot Track On Board Dimmer**  
designed by FLOS Architectural

Accent lighting LED module to be installed in The Tracking Magnet System.

- 03.8021.40 - 1052lm White
- 03.8021.05 - 1052lm Chrome
- 03.8021.14 - 1052lm Black

## Anthony Spot Track On Board Dimmer . Lamps

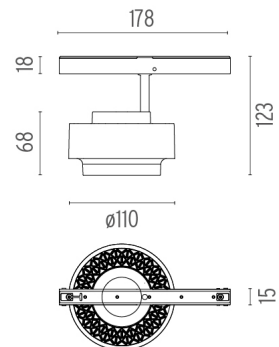


**Power LED**

**Lamp category:**  
LED

**Socket:**  
Special base

**Lamp type:**  
Power LED



### CERTIFICATIONS

