

ANTHONY SPOT TRACK ON BOARD DIMMER

Number of heads	1
Mounting	Track mounting
Lamps description	Power LED 16W 1310 lm 2700K CRI 90
Voltage (V)	48
Environment	Indoor

OPTICAL

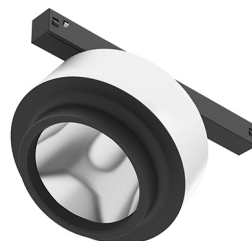
Reflector finish	Aluminum
Aiming	Adjustable
Light distribution symmetry	Symmetric
Beam angle	15° Spot

ELECTRICAL

Transformer availability	Separate item
Transformer mounting	Remote
Transformer type	Electronic dimmable
Emergency	Without
Insulation class	Class III

PHYSICAL

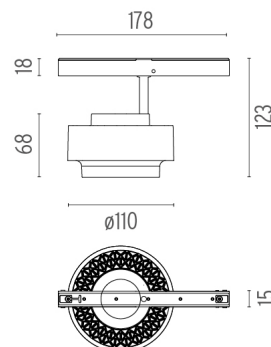
Spot diameter (mm)	110
Construction material	Aluminium
Weight (kg)	0,36



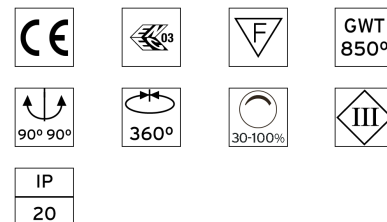
Anthony Spot Track On Board Dimmer
designed by FLOS Architectural

Accent lighting LED module to be installed in The Tracking Magnet System.

● 03.8020.40 - 1010lm	White
● 03.8020.05 - 1010lm	Chrome
● 03.8020.14 - 1010lm	Black



CERTIFICATIONS



Anthony Spot Track On Board Dimmer . Accessories

Optical



○ 08.0050.00

Flood lens



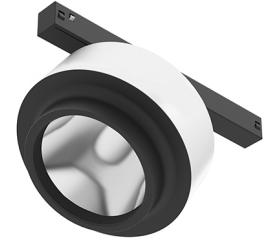
08.8418.68A

Elliptical lens



● 08.8419.14A

Honeycomb



Anthony Spot Track On Board Dimmer
designed by FLOS Architectural

Accent lighting LED module to be installed in The Tracking Magnet System.

- 03.8020.40 - 1010lm White
- 03.8020.05 - 1010lm Chrome
- 03.8020.14 - 1010lm Black

Anthony Spot Track On Board Dimmer . Lamps

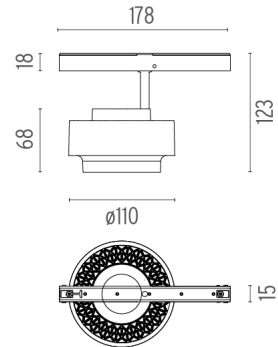


Power LED

Lamp category:
LED

Socket:
Special base

Lamp type:
Power LED



CERTIFICATIONS

