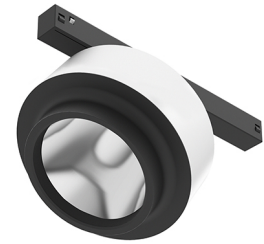


ANTHONY SPOT TRACK DALI VERSION

Number of heads	1
Mounting	Track mounting
Lamps description	Power LED 16W 1310 lm 2700K CRI 90
Voltage (V)	48
Environment	Indoor
Notes	Only compatible with DALI, 1-10V, FLOS SMART CONTROL profile version.



OPTICAL

Reflector finish	Aluminum
Aiming	Adjustable
Light distribution symmetry	Symmetric
Beam angle	15° Spot

Anthony Spot Track Dali Version designed by FLOS Architectural

Accent lighting LED module to be installed in The Tracking Magnet System.

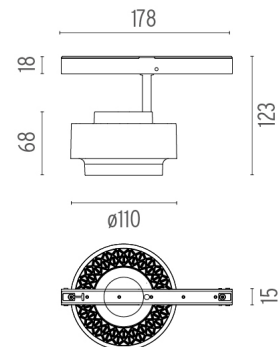
ELECTRICAL

Transformer availability	Separate item
Transformer mounting	Remote
Transformer type	Electronic dimmable dali
Emergency	Without
Insulation class	Class III

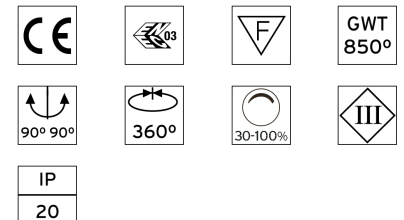
- 03.8020.40.DA - 1010lm White
- 03.8020.05.DA - 1010lm Chrome
- 03.8020.14.DA - 1010lm Black

PHYSICAL

Spot diameter (mm)	110
Construction material	Aluminium
Weight (kg)	0,36



CERTIFICATIONS



Anthony Spot Track Dali Version . Accessories

Optical



○ 08.0050.00

Flood lens



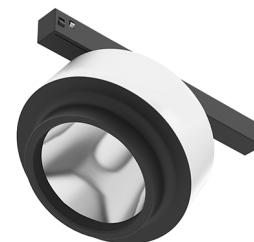
08.8418.68A

Elliptical lens



● 08.8419.14A

Honeycomb



Anthony Spot Track Dali Version
designed by FLOS Architectural

Accent lighting LED module to be installed in The Tracking Magnet System.

- 03.8020.40.DA - 1010lm White
- 03.8020.05.DA - 1010lm Chrome
- 03.8020.14.DA - 1010lm Black

Anthony Spot Track Dali Version . Lamps

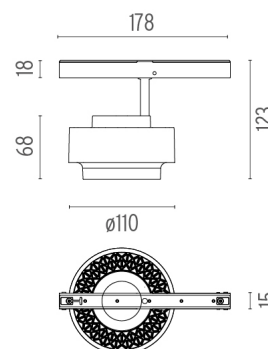


Power LED

Lamp category:
LED

Socket:
Special base

Lamp type:
Power LED



CERTIFICATIONS

