

LIGHT SUPPLY ADJUSTABLE TRIM DIMMABLE

Number of heads	1
Mounting	Ceiling recessed
Lamps description	LED Array High Performances 30,1W 2929 lm 4000K CRI 90
Luminaire luminous flux	Extreme Cut-off. See reference number
Voltage (V)	220/240
Environment	Indoor

OPTICAL

Aiming	Adjustable
Light distribution symmetry	Symmetric
Beam angle	37° Flood

ELECTRICAL

Transformer availability	Included
Transformer mounting	Remote
Transformer type	Electronic dimmable I-10V, Electronic dimmable dali
Emergency	Without
Insulation class	Class II

PHYSICAL

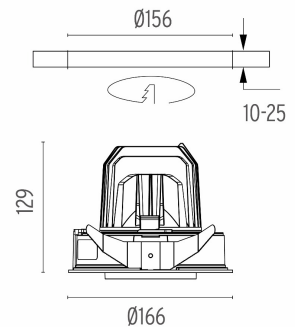
Cutout diameter (mm)	156
Recessed depth (mm)	239
Construction material	Aluminium
Weight (kg)	1,01



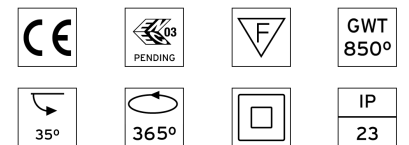
Light Supply Adjustable Trim Dimmable designed by FLOS Architectural

Embedded luminaire for LED light source. Remote 220/240V power supply included.

- 03.6805.40ADA - 1937lm White
- 03.6805.14ADA - 1937lm Black



CERTIFICATIONS



Light Supply Adjustable Trim Dimmable . Accessories

Optical



● 08.8049.14
Honeycomb. Small Cells



● 08.8377.14
Honeycomb. Big Cells



● 08.8242.14
Screening crosspiece



○ 08.8117.68
Flood lens



○ 08.8118.68
Elliptical lens



○ 08.8450.00
**Light Supply Adjustable
spare reflector. Spot**



○ 08.8451.00
**Light Supply Adjustable
spare reflector. Medium**



○ 08.8452.00
**Light Supply Adjustable
spare reflector. Flood**



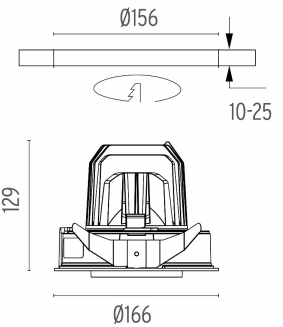
● 08.8453.40
Highly-efficient cylinder



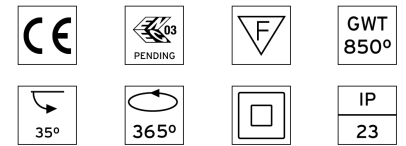
Light Supply Adjustable Trim Dimmable
designed by FLOS Architectural

Embedded luminaire for LED light source. Remote 220/240V power supply included.

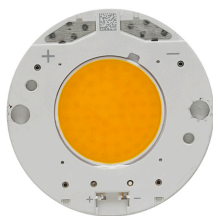
- 03.6805.40ADA - 1937lm White
- 03.6805.14ADA - 1937lm Black



CERTIFICATIONS



Light Supply Adjustable Trim Dimmable . Lamps



LED Array

Lamp category:

LED

Socket:

Special base

Lamp type:

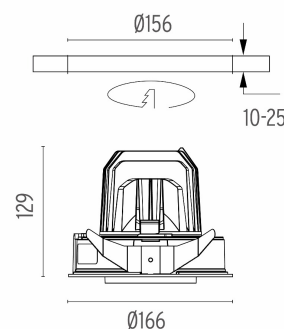
LED Array



Light Supply Adjustable Trim Dimmable
designed by FLOS Architectural

Embedded luminaire for LED light source. Remote 220/240V power supply included.

- 03.6805.40ADA - 1937lm White
- 03.6805.14ADA - 1937lm Black



CERTIFICATIONS

