

## ANTHONY DOWNLIGHT OPTIC MEDIUM

|                                |   |
|--------------------------------|---|
| <b>Number of heads</b>         | 1   |
| <b>Mounting</b>                | Ceiling recessed  |
| <b>Lamps description</b>       | Power LED DC 500 mA 10W 975 lm 3000K CRI 90   |
| <b>Luminaire luminous flux</b> | See reference number  |
| <b>Environment</b>             | Indoor  |
| <b>Notes</b>                   | Standard trim cove in white for all finishes; black finish available under request. To obtain flood optics (35°) order Anthony Downlight Medium + flood lens. |

### OPTICAL

|                                    |            |
|------------------------------------|------------|
| <b>Reflector finish</b>            | Aluminum   |
| <b>Aiming</b>                      | Adjustable |
| <b>Light distribution symmetry</b> | Symmetric  |
| <b>Beam angle</b>                  | 22° Medium |

### ELECTRICAL

|                                 |               |
|---------------------------------|---------------|
| <b>Transformer availability</b> | Separate item |
| <b>Transformer mounting</b>     | Remote        |
| <b>Transformer type</b>         | Electronic    |
| <b>Emergency</b>                | Without       |
| <b>Insulation class</b>         | Class III     |




### PHYSICAL

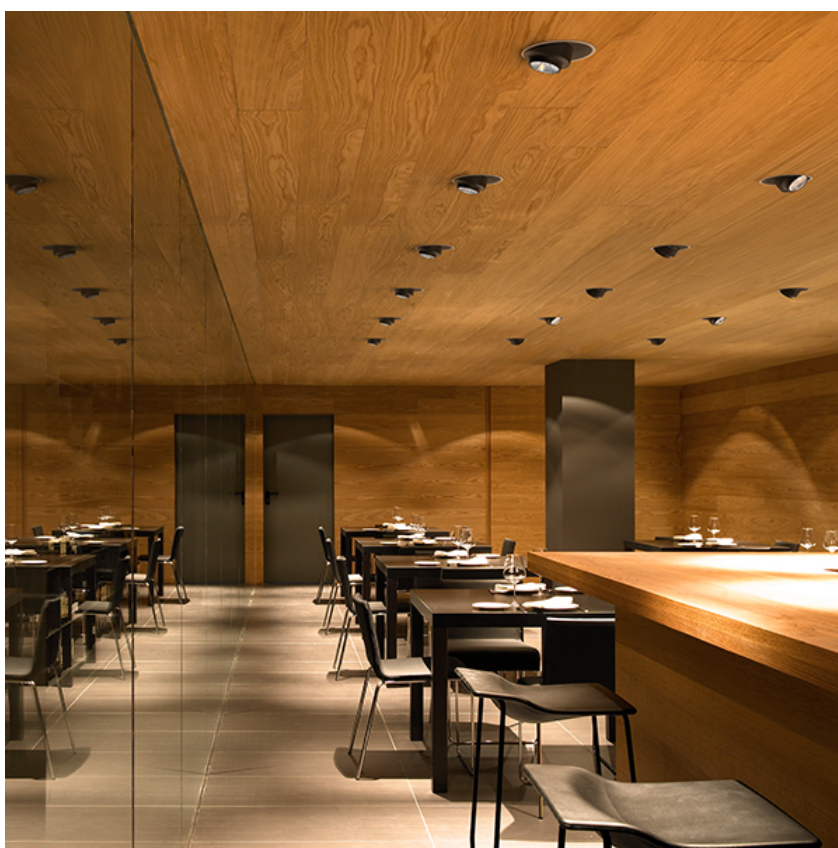
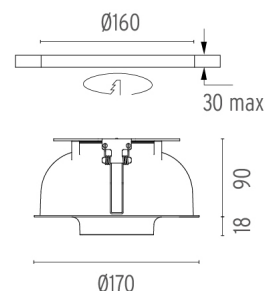
|                              |           |
|------------------------------|-----------|
| <b>Cutout diameter (mm)</b>  | 160       |
| <b>Recessed depth (mm)</b>   | 90        |
| <b>Spot diameter (mm)</b>    | 110       |
| <b>Construction material</b> | Aluminium |
| <b>Weight (kg)</b>           | 1,07      |



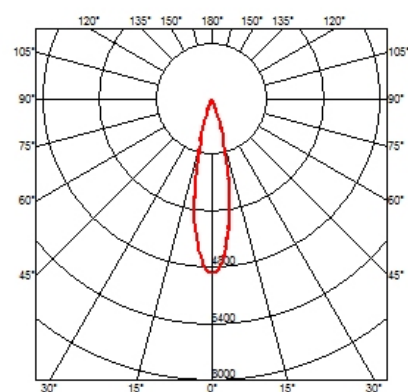
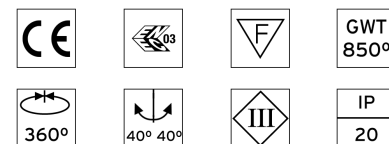
**Anthony Downlight Optic Medium**  
designed by Antonio Citterio

High-performance embedded light fixture for LED light source. Remote 220-240V power supply not included.

|   |                     |        |
|---|---------------------|--------|
|  | 03.6418.40B - 888lm | White  |
|  | 03.6418.05B - 888lm | Chrome |
|  | 03.6418.14B - 888lm | Black  |



### CERTIFICATIONS



## Anthony Downlight Optic Medium . Accessories

### Optical



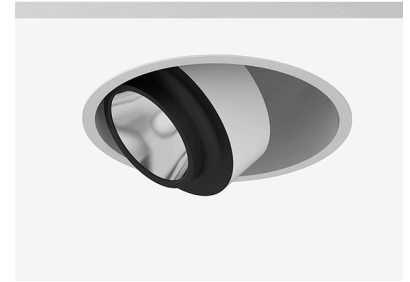
○ 08.0050.00  
**Flood lens**



○ 08.8418.68A  
**Elliptical lens**



● 08.8419.14A  
**Honeycomb**



**Anthony Downlight Optic Medium**  
designed by Antonio Citterio

High-performance embedded light fixture for LED light source. Remote 220-240V power supply not included.

- 03.6418.40B - 888lm White
- 03.6418.05B - 888lm Chrome
- 03.6418.14B - 888lm Black

### Power Supply



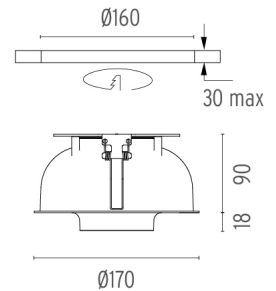
○ 60.8485  
**Constant Current Power Supply for LED. 24W**  
Constant voltage supply source of 24W, 240V - 50/60Hz with adjustable Dali 500 mA supply voltage.  
Maximum length of 1.5 mm<sup>2</sup> secondary conductor (m): 10  
Maximum length of 2.5 mm<sup>2</sup> secondary conductor (m): 15



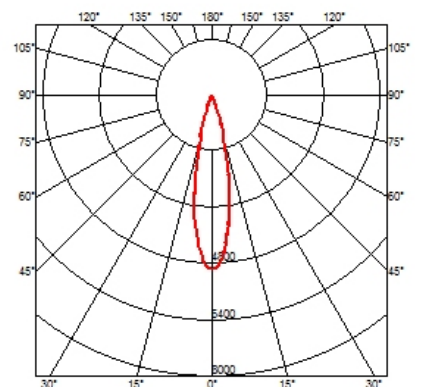
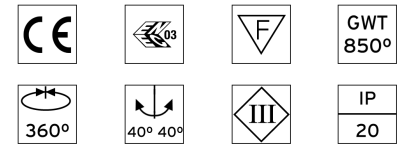
○ 60.9233  
**Constant Current Power Supply for LED 32W**  
Non dimmable continuous current power supply of 32W, with power current selected through adjustable 350/500/550/700/850/900 mA switch.  
Maximum length of 1.5 mm<sup>2</sup> secondary conductor (m): 20  
Maximum length of 2.5 mm<sup>2</sup> secondary conductor (m): 50



○ 60.8847  
**Constant Current Power Supply for LED. 10-20W**  
Continuous current power supply of 10-20W, 110/240V - 50/60Hz with power current selected through adjustable 250/350/400/450/500/ 550/600/700 mA Dali switch. (Johnny 120 with accessories max 450 mA)  
Maximum length of 1.5 mm<sup>2</sup> secondary conductor (m): 10  
Maximum length of 2.5 mm<sup>2</sup> secondary conductor (m): 15



### CERTIFICATIONS



## Anthony Downlight Optic Medium . Accessories



60.9312

### Constant Current Power Supply for LED.

**350/500/700 mA / 20W**  
Non dimmable continuous current power supply 220/240V - 50/60Hz.

Maximum length of 1.5 mm<sup>2</sup> secondary conductor (m): 20

Maximum length of 2.5 mm<sup>2</sup> secondary conductor (m): 50



### Anthony Downlight Optic Medium designed by Antonio Citterio

High-performance embedded light fixture for LED light source. Remote 220-240V power supply not included.

- 03.6418.40B - 888lm White
- 03.6418.05B - 888lm Chrome
- 03.6418.14B - 888lm Black

## Anthony Downlight Optic Medium . Lamps



### Power LED

### Lamp category:

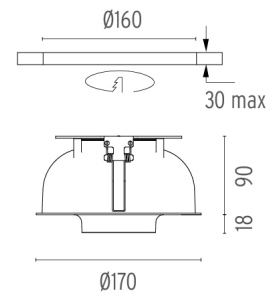
LED

### Socket:

Special base

### Lamp type:

Power LED



### CERTIFICATIONS

