

ANTHONY DOWNLIGHT OPTIC MEDIUM

Number of heads	1
Mounting	Ceiling recessed
Lamps description	Power LED DC 500 mA 10W 905 lm 2700K CRI 90
Luminaire luminous flux	See reference number
Environment	Indoor
Notes	Standard trim cove in white for all finishes; black finish available under request. To obtain flood optics (35°) order Anthony Downlight Medium + flood lens.

OPTICAL

Reflector finish	Aluminum
Aiming	Adjustable
Light distribution symmetry	Symmetric
Beam angle	22° Medium

ELECTRICAL

Transformer availability	Separate item
Transformer mounting	Remote
Transformer type	Electronic
Emergency	Without
Insulation class	Class III




PHYSICAL

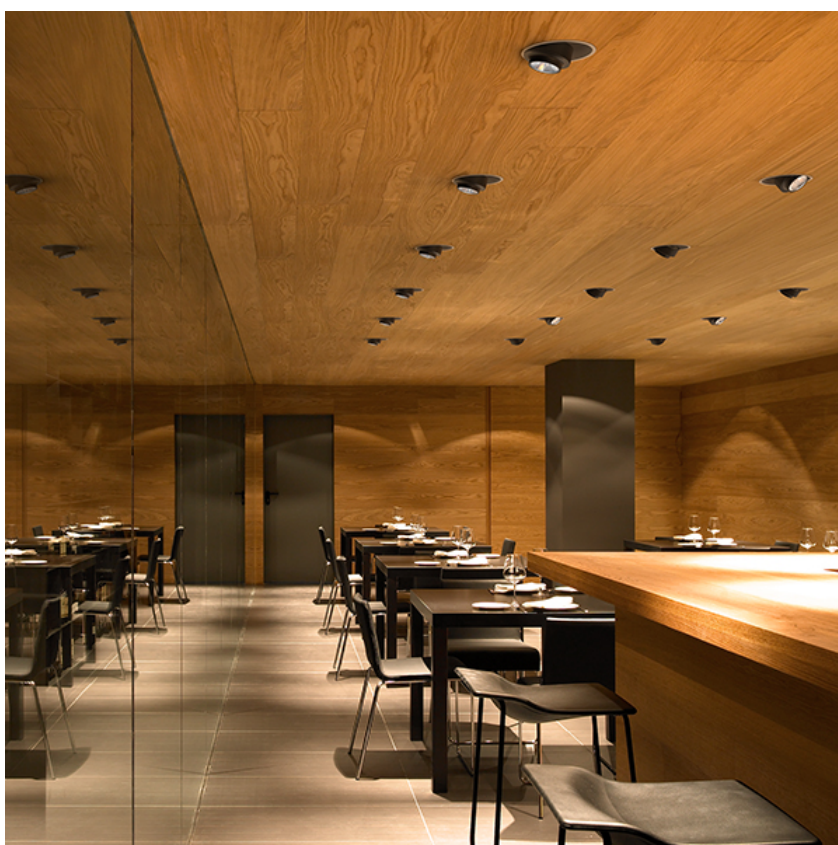
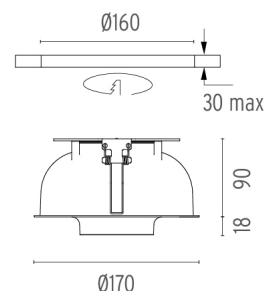
Cutout diameter (mm)	160
Recessed depth (mm)	90
Spot diameter (mm)	110
Construction material	Aluminium
Weight (kg)	1,07



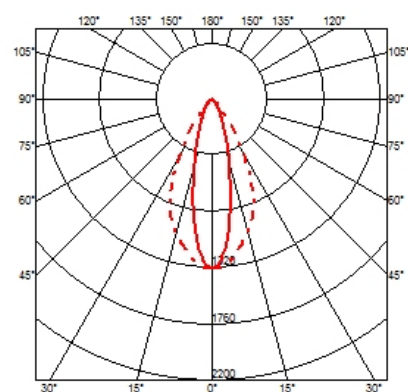
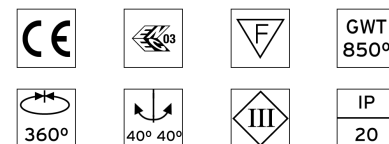
Anthony Downlight Optic Medium
designed by Antonio Citterio

High-performance embedded light fixture for LED light source. Remote 220-240V power supply not included.

	03.6417.40B - 827lm	White
	03.6417.05B - 827lm	Chrome
	03.6417.14B - 827lm	Black



CERTIFICATIONS



Anthony Downlight Optic Medium . Accessories

Optical



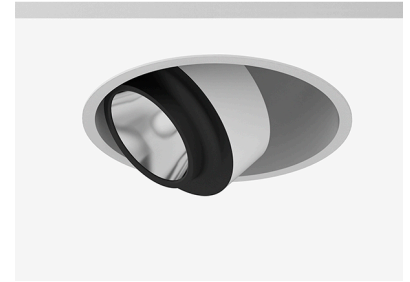
○ 08.0050.00
Flood lens



○ 08.8418.68A
Elliptical lens



● 08.8419.14A
Honeycomb



Anthony Downlight Optic Medium
designed by Antonio Citterio

High-performance embedded light fixture for LED light source. Remote 220-240V power supply not included.

- 03.6417.40B - 827lm White
- 03.6417.05B - 827lm Chrome
- 03.6417.14B - 827lm Black

Power Supply



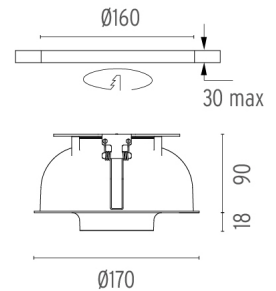
○ 60.8485
Constant Current Power Supply for LED. 24W
Constant voltage supply source of 24W, 240V - 50/60Hz with adjustable Dali 500 mA supply voltage.
Maximum length of 1.5 mm² secondary conductor (m): 10
Maximum length of 2.5 mm² secondary conductor (m): 15



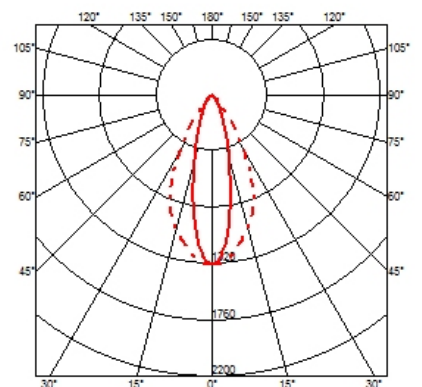
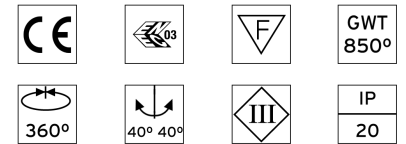
○ 60.9233
Constant Current Power Supply for LED 32W
Non dimmable continuous current power supply of 32W, with power current selected through adjustable 350/500/550/700/850/900 mA switch.
Maximum length of 1.5 mm² secondary conductor (m): 20
Maximum length of 2.5 mm² secondary conductor (m): 50



○ 60.8847
Constant Current Power Supply for LED. 10-20W
Continuous current power supply of 10-20W, 110/240V - 50/60Hz with power current selected through adjustable 250/350/400/450/500/ 550/600/700 mA Dali switch. (Johnny 120 with accessories max 450 mA)
Maximum length of 1.5 mm² secondary conductor (m): 10
Maximum length of 2.5 mm² secondary conductor (m): 15



CERTIFICATIONS



Anthony Downlight Optic Medium . Accessories



60.9312

Constant Current Power Supply for LED.

350/500/700 mA / 20W
Non dimmable continuous current power supply 220/240V - 50/60Hz.

Maximum length of 1.5 mm² secondary conductor (m): 20

Maximum length of 2.5 mm² secondary conductor (m): 50



Anthony Downlight Optic Medium designed by Antonio Citterio

High-performance embedded light fixture for LED light source. Remote 220-240V power supply not included.

- 03.6417.40B - 827lm White
- 03.6417.05B - 827lm Chrome
- 03.6417.14B - 827lm Black

Anthony Downlight Optic Medium . Lamps



Power LED

Lamp category:

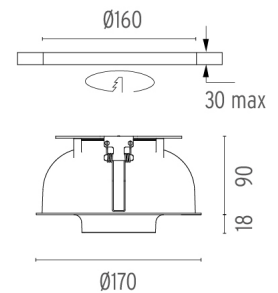
LED

Socket:

Special base

Lamp type:

Power LED



CERTIFICATIONS

