

## ANTHONY DOWNLIGHT OPTIC SPOT

<b>Number of heads</b>	1
<b>Mounting</b>	Ceiling recessed
<b>Lamps description</b>	Power LED DC 500 mA 10W 905 lm 2700K CRI 90
<b>Luminaire luminous flux</b>	See reference number
<b>Environment</b>	Indoor
<b>Notes</b>	Standard trim cove in white for all finishes; black finish available under request. To obtain flood optics (35°) order Anthony Downlight Medium + flood lens.

### OPTICAL

<b>Reflector finish</b>	Aluminum
<b>Aiming</b>	Adjustable
<b>Light distribution symmetry</b>	Symmetric
<b>Beam angle</b>	15° Spot

### ELECTRICAL

<b>Transformer availability</b>	Separate item
<b>Transformer mounting</b>	Remote
<b>Transformer type</b>	Electronic
<b>Emergency</b>	Without
<b>Insulation class</b>	Class III




### PHYSICAL

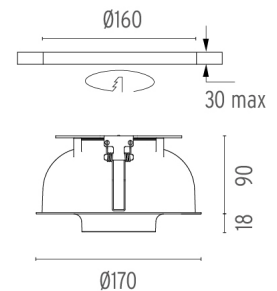
<b>Cutout diameter (mm)</b>	160
<b>Recessed depth (mm)</b>	90
<b>Spot diameter (mm)</b>	110
<b>Construction material</b>	Aluminium
<b>Weight (kg)</b>	1,07



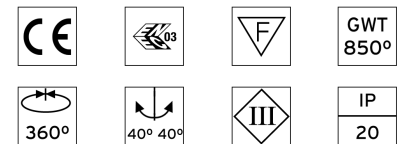
**Anthony Downlight Optic Spot**  
designed by Antonio Citterio

High-performance embedded light fixture for LED light source. Remote 220-240V power supply not included.

	03.6415.40B - 795lm	White
	03.6415.05B - 795lm	Chrome
	03.6415.14B - 795lm	Black



### CERTIFICATIONS



## Anthony Downlight Optic Spot . Accessories

### Optical



○ 08.0050.00

**Flood lens**



08.8418.68A

**Elliptical lens**



● 08.8419.14A

**Honeycomb**



**Anthony Downlight Optic Spot**  
designed by Antonio Citterio

High-performance embedded light fixture for LED light source. Remote 220-240V power supply not included.

- 03.6415.40B - 795lm White
- 03.6415.05B - 795lm Chrome
- 03.6415.14B - 795lm Black

### Power Supply



○ 60.8485

#### Constant Current Power Supply for LED. 24W

Constant voltage supply source of 24W, 240V - 50/60Hz with adjustable Dali 500 mA supply voltage.

Maximum length of 1.5 mm<sup>2</sup> secondary conductor (m): 10

Maximum length of 2.5 mm<sup>2</sup> secondary conductor (m): 15



○ 60.9233

#### Constant Current Power Supply for LED 32W

Non dimmable continuous current power supply of 32W, with power current selected through adjustable 350/500/550/700/850/900 mA switch.

Maximum length of 1.5 mm<sup>2</sup> secondary conductor (m): 20

Maximum length of 2.5 mm<sup>2</sup> secondary conductor (m): 50



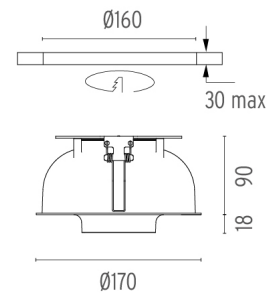
○ 60.8847

#### Constant Current Power Supply for LED. 10-20W

Continuous current power supply of 10-20W, 110/240V - 50/60Hz with power current selected through adjustable 250/350/400/450/500/ 550/600/700 mA Dali switch. (Johnny 120 with accessories max 450 mA)

Maximum length of 1.5 mm<sup>2</sup> secondary conductor (m): 10

Maximum length of 2.5 mm<sup>2</sup> secondary conductor (m): 15



### CERTIFICATIONS



## Anthony Downlight Optic Spot . Accessories



60.9312

### Constant Current Power Supply for LED.

**350/500/700 mA / 20W**  
Non dimmable continuous current power supply 220/240V - 50/60Hz.

Maximum length of 1.5 mm<sup>2</sup> secondary conductor (m): 20

Maximum length of 2.5 mm<sup>2</sup> secondary conductor (m): 50



### Anthony Downlight Optic Spot designed by Antonio Citterio

High-performance embedded light fixture for LED light source. Remote 220-240V power supply not included.

- 03.6415.40B - 795lm White
- 03.6415.05B - 795lm Chrome
- 03.6415.14B - 795lm Black

## Anthony Downlight Optic Spot . Lamps



### Power LED

### Lamp category:

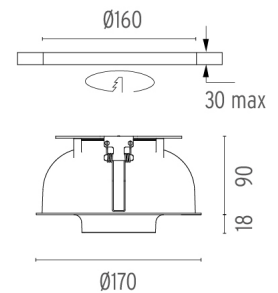
LED

### Socket:

Special base

### Lamp type:

Power LED



### CERTIFICATIONS

