

SPOT TRACKING I20

Number of heads	1
Mounting	Track mounting
Lamps description	Power LED 12,5W 985 lm 2700K CRI 90
Luminaire luminous flux	Extreme Cut-off. See reference number
Voltage (V)	24
Environment	Indoor
Notes	Maximum 10 spots for a single driver. Ask FLOS for other combinations. Accessories included (honeycomb and screening crosspiece).



OPTICAL

Reflector finish	Aluminum
Aiming	Adjustable
Light distribution symmetry	Symmetric
Beam angle	25° Medium




Spot Tracking I20

designed by FLOS Architectural

<div>Accent lighting LED module to be installed in The Tracking Magnet System.</div>

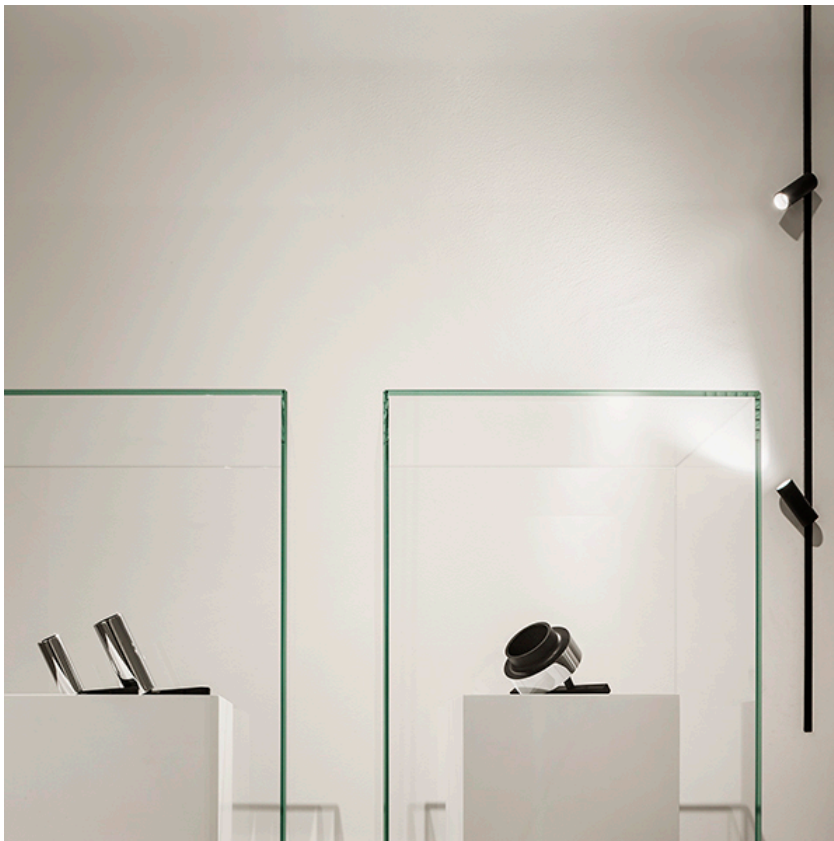
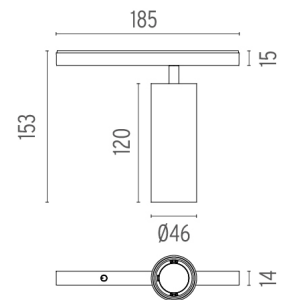
ELECTRICAL

Transformer availability	Separate item
Transformer mounting	Remote
Transformer type	Electronic dimmable
Emergency	Without
Insulation class	Class III

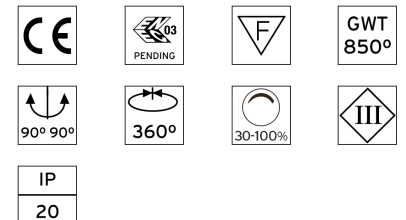
	03.6413.40 - 767lm	White
	03.6413.05 - 767lm	Chrome
	03.6413.14 - 767lm	Black

PHYSICAL

Width (mm)	185
Spot diameter (mm)	46
Construction material	Aluminium
Weight (kg)	0,30



CERTIFICATIONS



Spot Tracking I20 . Lamps



Power LED

Lamp category:
LED

Socket:
Special base

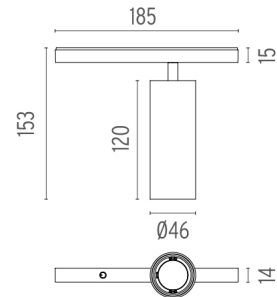
Lamp type:
Power LED



Spot Tracking I20
designed by FLOS Architectural

<div>Accent lighting LED module to be installed in The Tracking Magnet System.</div>

- 03.6413.40 - 767lm White
- 03.6413.05 - 767lm Chrome
- 03.6413.14 - 767lm Black



CERTIFICATIONS

