

## SPOT TRACKING I20

<b>Number of heads</b>	1
<b>Mounting</b>	Track mounting
<b>Lamps description</b>	Power LED 12,5W 1060 lm 3000K CRI 90
<b>Luminaire luminous flux</b>	Extreme Cut-off. See reference number
<b>Voltage (V)</b>	24
<b>Environment</b>	Indoor
<b>Notes</b>	Maximum 10 spots for a single driver. Ask FLOS for other combinations. Accessories included (honeycomb and screening crosspiece).



## OPTICAL

<b>Reflector finish</b>	Aluminum
<b>Aiming</b>	Adjustable
<b>Light distribution symmetry</b>	Symmetric
<b>Beam angle</b>	25° Medium

## ELECTRICAL

<b>Transformer availability</b>	Separate item
<b>Transformer mounting</b>	Remote
<b>Transformer type</b>	Electronic dimmable
<b>Emergency</b>	Without
<b>Insulation class</b>	Class III

## PHYSICAL

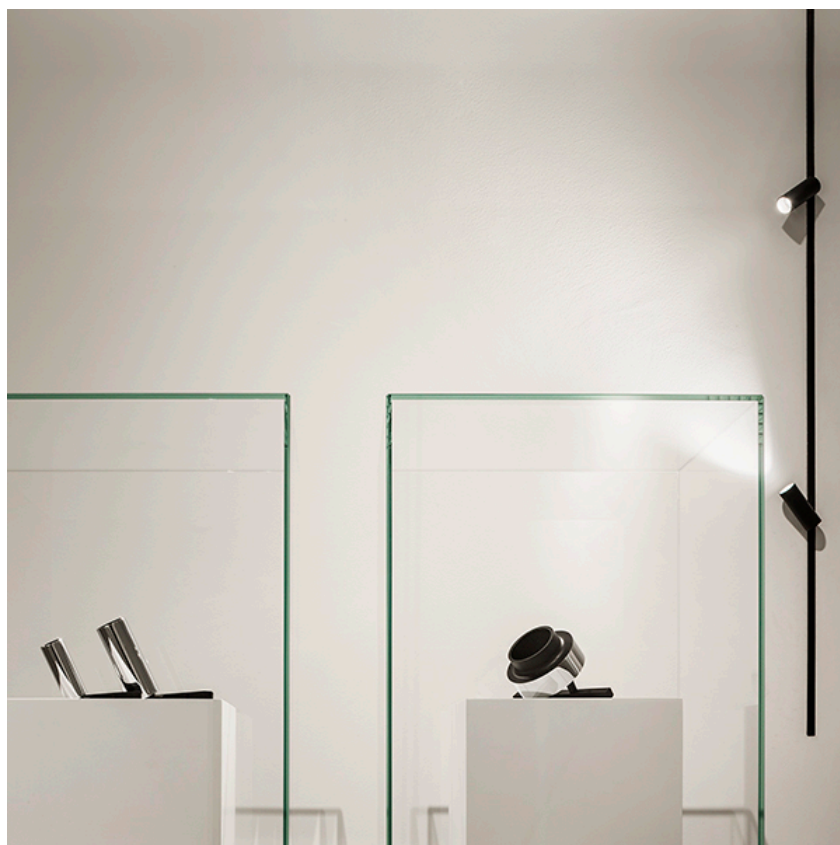
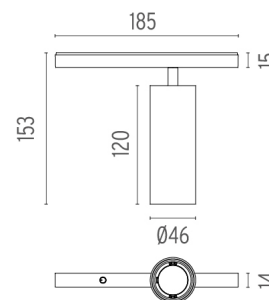
<b>Width (mm)</b>	185
<b>Spot diameter (mm)</b>	46
<b>Construction material</b>	Aluminium
<b>Weight (kg)</b>	0,30

## Spot Tracking I20

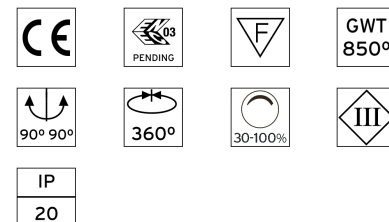
designed by FLOS Architectural

<div>Accent lighting LED module to be installed in The Tracking Magnet System.</div>

● 03.6412.40A - 814lm	White
● 03.6412.05A - 814lm	Chrome
● 03.6412.14A - 814lm	Black



## CERTIFICATIONS



## Spot Tracking I20 . Lamps



### Power LED

**Lamp category:**  
LED

**Socket:**  
Special base

**Lamp type:**  
Power LED

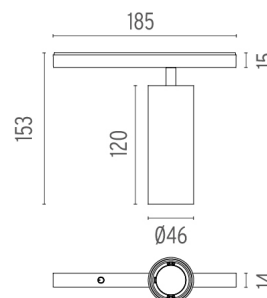


### Spot Tracking I20

designed by FLOS Architectural

<div>Accent lighting LED module to be installed in The Tracking Magnet System.</div>

03.6412.40A - 814lm	White
03.6412.05A - 814lm	Chrome
03.6412.14A - 814lm	Black



### CERTIFICATIONS

